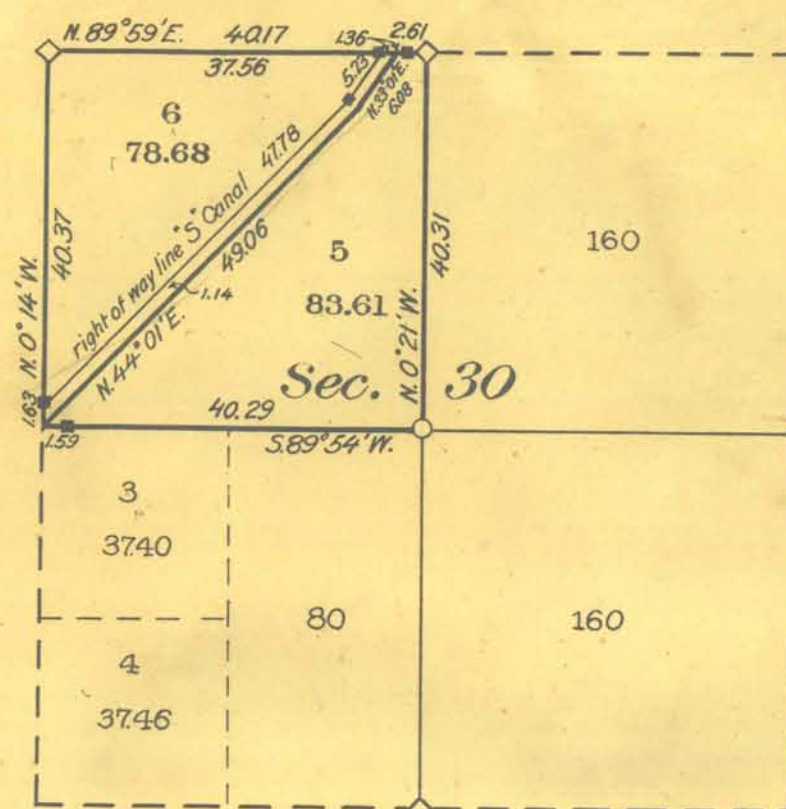
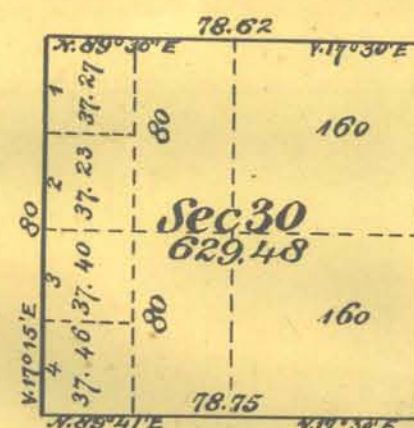


DEPARTMENT OF THE INTERIOR
 UNITED STATES RECLAMATION SERVICE
 A. P. DAVIS DIRECTOR AND CHIEF ENGINEER
 TRUCKEE-CARSON PROJECT NEVADA
 SUPPLEMENTAL PLAT
 SECTION 30
 TOWNSHIP 19 NORTH RANGE 30 EAST M. D. M. NEVADA
 SURVEYED BY J. J. WALSH SURVEYOR U. S. R. S.
 UNDER DEPARTMENTAL INSTRUCTIONS OF OCTOBER 24, 1906
 APRIL - MAY 1912
 SCALE 4 INCHES=1 MILE



- ◇ DENOTES CORNER OF ORIGINAL SURVEY FOUND IN PLACE.
- DENOTES CORNER SET BY J. J. WALSH SURVEYOR, U. S. R. S.
- DENOTES WITNESS CORNER SET BY J. J. WALSH, SURVEYOR, U. S. R. S.



COPIED FROM PLAT APPROVED OCTOBER 16, 1868

THE ACCOMPANYING DIAGRAM OF THE SURVEY OF SECTION 30 IN T. 19 N., R. 30 E., M. D. M., NEVADA, EXECUTED UNDER AUTHORITY OF DEPARTMENTAL INSTRUCTIONS OF OCTOBER 24, 1906, IS CORRECT AND ACCORDING TO THE FIELD NOTES THEREOF ON FILE IN THIS OFFICE, WHICH HAVE BEEN EXAMINED AND APPROVED.

U. S. RECLAMATION SERVICE
 WASHINGTON, D. C. March 16, 1915

A. P. Davis
 DIRECTOR AND CHIEF ENGINEER

JCM

THE ACCOMPANYING DIAGRAM OF THE SURVEY OF SECTION 30 IN T. 19 N., R. 30 E., M. D. M., NEVADA, IS CONFORMABLE TO THE FIELD NOTES THEREOF ON FILE IN THIS OFFICE, WHICH HAVE BEEN EXAMINED AND ACCEPTED.

DEPARTMENT OF THE INTERIOR
 GENERAL LAND OFFICE
 WASHINGTON, D. C. MARCH 23, 1915

[Signature]
 COMMISSIONER

ACCESSION NO. 16056

0749

T. 19 N., R. 30 E.