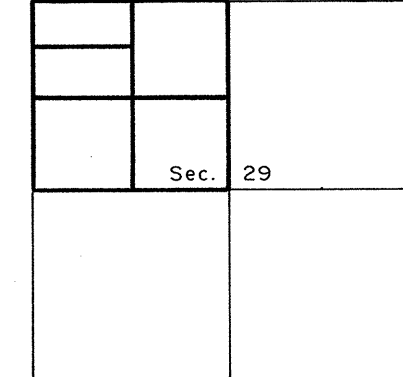


TOWNSHIP 19 NORTH, RANGE 29 EAST, OF THE MOUNT DIABLO MERIDIAN, NEVADA
DEPENDENT RESURVEY AND SUBDIVISION

LOCATION DIAGRAM

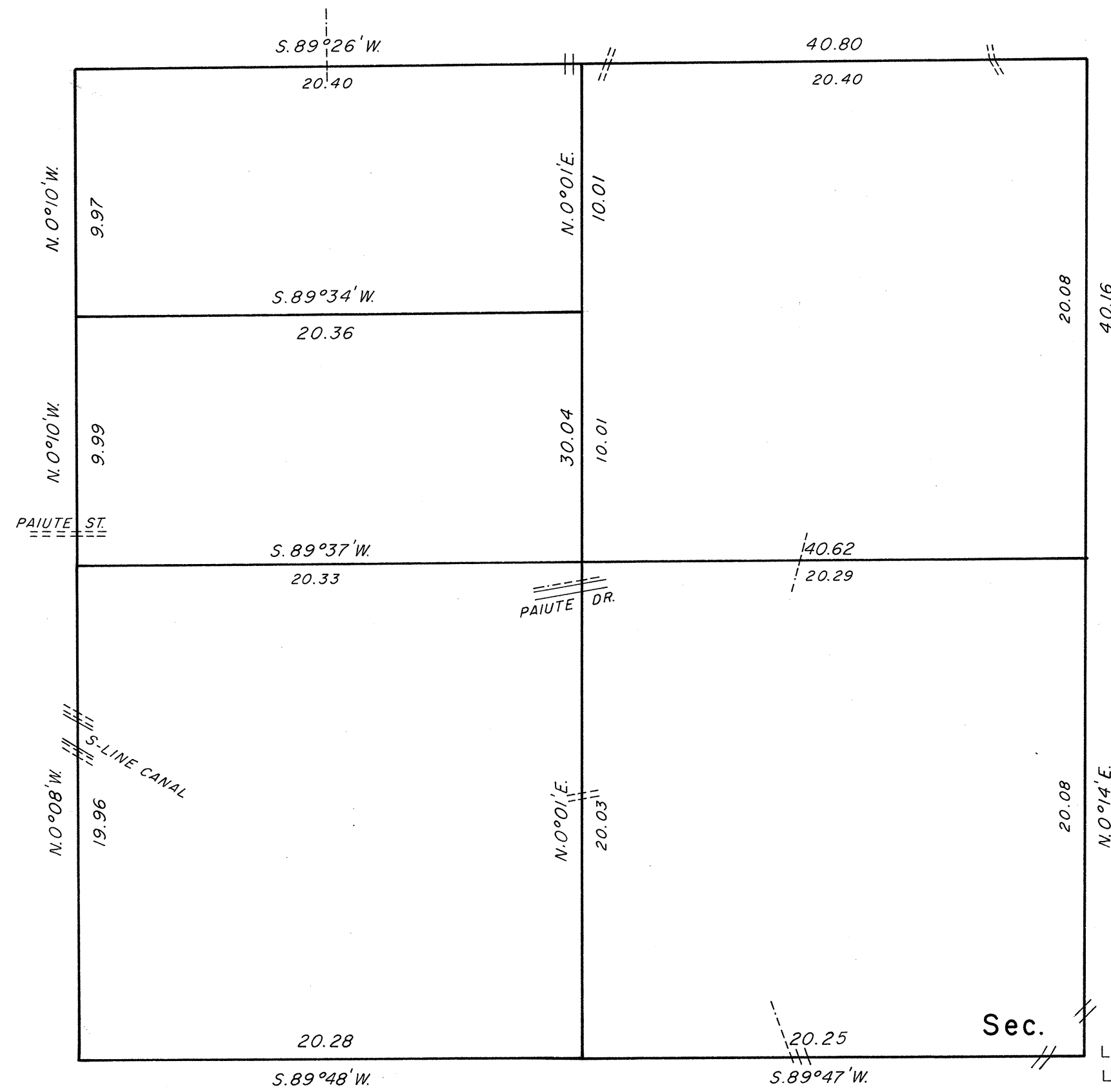
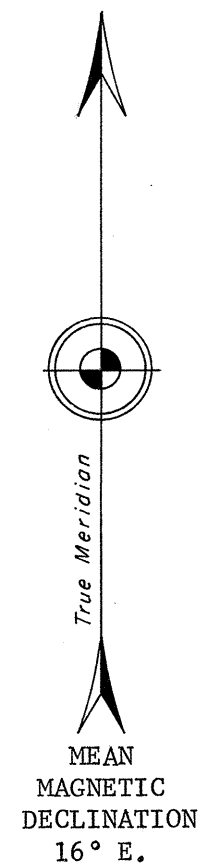


A history of surveys is contained in the field notes.

This plat represents the dependent resurvey of a portion of the subdivisional lines designed to restore the corners in their true original locations according to the best available evidence, and the subdivision of sec. 29, T. 19 N., R. 29 E., Mount Diablo Meridian, Nevada.

The area is as shown on the plat approved January 8, 1869.

Survey executed by Harold W. Heimark, Cadastral Surveyor, under the supervision of William M. Smart, Chief, Branch of Cadastral Surveys, Western Field Office, beginning June 1, 1977, and completed June 16, 1977, pursuant to Special Instructions dated May 19, 1977, for Group No. 549, Nevada.



Latitude 39° 28.9' N.
Longitude 118° 45.1' W.

UNITED STATES DEPARTMENT OF THE INTERIOR
BUREAU OF LAND MANAGEMENT
Denver, Colorado February 26, 1981

This plat is strictly conformable to the approved field notes, and the survey, having been correctly executed in accordance with the requirements of law and the regulations of this Bureau, is hereby accepted.

For the Director

[Signature]

Chief, Cadastral Survey
Examination and Approval Staff

