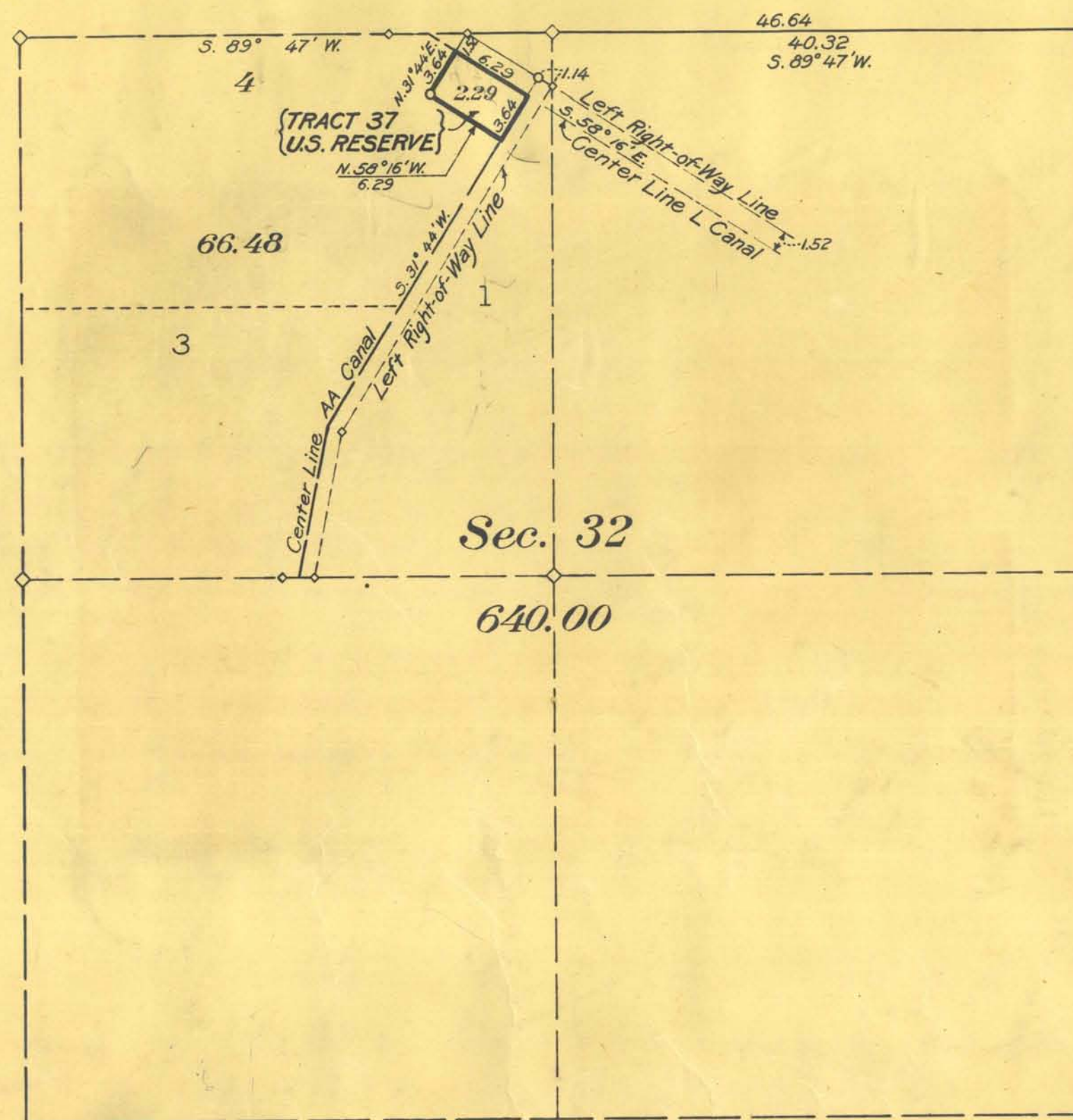


DEPARTMENT OF THE INTERIOR  
UNITED STATES RECLAMATION SERVICE  
A. P. DAVIS DIRECTOR AND CHIEF ENGINEER  
TRUCKEE-CARSON PROJECT  
SUPPLEMENTAL PLAT  
SECTION 32  
TOWNSHIP 19 NORTH RANGE 28 EAST M. D. M., NEVADA  
SURVEYED BY E. P. OSGOOD, SURVEYMAN, U. S. R. S.  
UNDER DEPARTMENTAL INSTRUCTIONS OF OCTOBER 24, 1906  
SCALE: 8 INCHES=1 MILE  
JUNE 1915



THE ACCOMPANYING DIAGRAM OF THE SURVEY OF SECTION 32 IN T. 19 N., R. 28 E., M. D. M., NEVADA, EXECUTED UNDER AUTHORITY OF DEPARTMENTAL INSTRUCTIONS OF OCTOBER 24, 1906 IS CORRECT AND ACCORDING TO THE FIELD NOTES THEREOF ON FILE IN THIS OFFICE, WHICH BEEN EXAMINED AND APPROVED.

U. S. RECLAMATION SERVICE

WASHINGTON, D. C. June 2, 1916

A. P. Davis  
DIRECTOR AND CHIEF ENGINEER.

THE ACCOMPANYING DIAGRAM OF THE SURVEY OF SECTION 32 IN T. 19 N., R. 28 E., M. D. M., NEVADA, IS CONFORMABLE TO THE FIELD NOTES THEREOF ON FILE IN THIS OFFICE, WHICH BEEN EXAMINED AND ACCEPTED.

DEPARTMENT OF THE INTERIOR  
GENERAL LAND OFFICE

WASHINGTON, D. C. Sept. 18, 1916

Commissioner.

ACCESSION NO. 17126

0641

T 19 N, R. 28 E