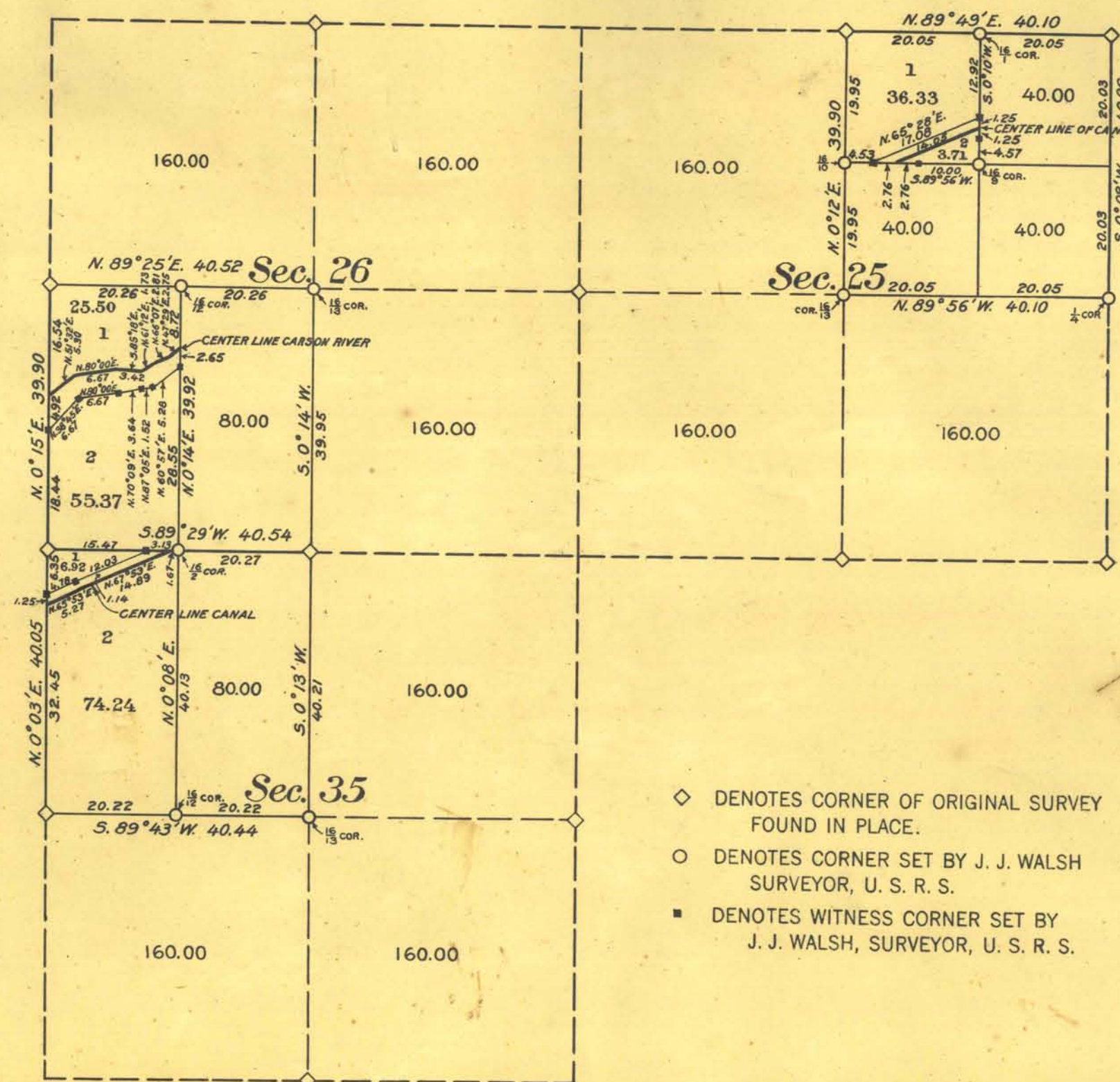


DEPARTMENT OF THE INTERIOR  
 UNITED STATES RECLAMATION SERVICE  
 A. P. DAVIS DIRECTOR AND CHIEF ENGINEER  
 TRUCKEE CARSON PROJECT NEVADA  
 SUPPLEMENTAL PLAT  
 SECTIONS 25, 26 AND 35  
 TOWNSHIP 19 NORTH RANGE 28 EAST M. D. M. NEVADA  
 SURVEYED BY J. J. WALSH SURVEYOR U. S. R. S.  
 UNDER DEPARTMENTAL INSTRUCTIONS OF OCTOBER 24, 1906  
 APRIL - MAY 1912  
 SCALE 4 INCHES = 1 MILE



- ◇ DENOTES CORNER OF ORIGINAL SURVEY FOUND IN PLACE.
- DENOTES CORNER SET BY J. J. WALSH SURVEYOR, U. S. R. S.
- DENOTES WITNESS CORNER SET BY J. J. WALSH, SURVEYOR, U. S. R. S.

THE ACCOMPANYING DIAGRAM OF THE SURVEY OF SECTIONS 25, 26 AND 35 IN T. 19 N., R. 28 E., M. D. M., NEVADA, EXECUTED UNDER AUTHORITY OF DEPARTMENTAL INSTRUCTIONS OF OCTOBER 24, 1906, IS CORRECT AND ACCORDING TO THE FIELD NOTES THEREOF ON FILE IN THIS OFFICE, WHICH HAVE BEEN EXAMINED AND APPROVED.

U. S. RECLAMATION SERVICE  
 WASHINGTON, D. C. March 16, 1915  
*A. P. Davis*  
 DIRECTOR AND CHIEF ENGINEER

THE ACCOMPANYING DIAGRAM OF THE SURVEY OF SECTIONS 25, 26 AND 35 IN T. 19 N., R. 28 E., M. D. M., NEVADA, IS CONFORMABLE TO THE FIELD NOTES THEREOF ON FILE IN THIS OFFICE, WHICH HAVE BEEN EXAMINED AND ACCEPTED.

DEPARTMENT OF THE INTERIOR  
 GENERAL LAND OFFICE  
 WASHINGTON, D. C. MARCH 29, 1915  
*[Signature]*  
 COMMISSIONER

ACCESSION NO. 16061

0640

T19N, R28E