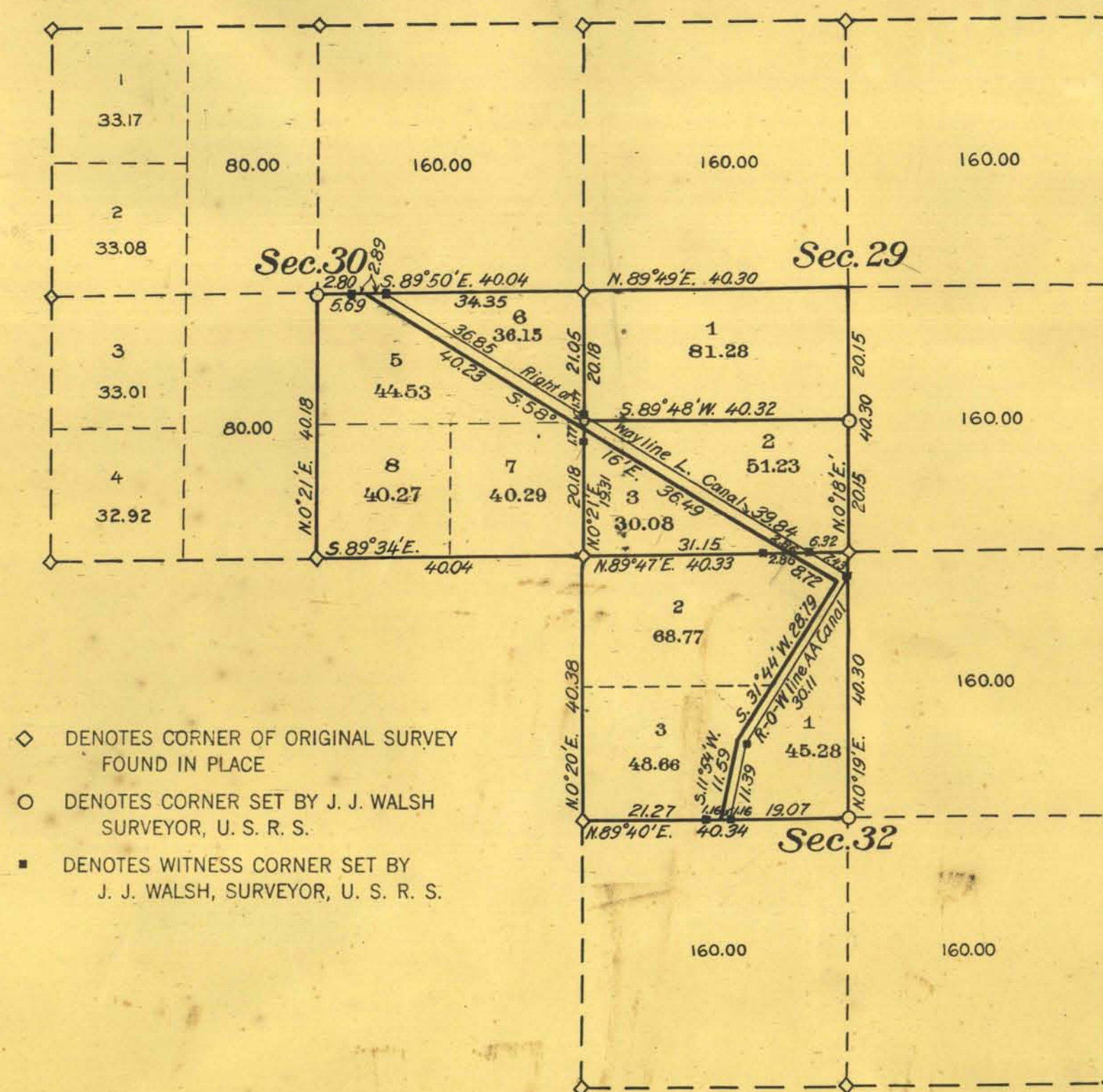


DEPARTMENT OF THE INTERIOR
 UNITED STATES RECLAMATION SERVICE
 A. P. DAVIS DIRECTOR AND CHIEF ENGINEER
 TRUCKEE-CARSON PROJECT NEVADA
 SUPPLEMENTAL PLAT
 SECTIONS 29, 30 AND 32
 TOWNSHIP 19 NORTH RANGE 28 EAST M. D. M. NEVADA
 SURVEYED BY J. J. WALSH SURVEYOR U. S. R. S.
 UNDER DEPARTMENTAL INSTRUCTIONS OF DECEMBER 28, 1908
 APRIL - MAY 1912
 SCALE 4 INCHES = 1 MILE



THE ACCOMPANYING DIAGRAM OF THE SURVEY OF SECTIONS 29, 30 AND 32 IN T. 19 N., R. 28 E., M. D. M., NEVADA, EXECUTED UNDER AUTHORITY OF DEPARTMENTAL INSTRUCTIONS OF DECEMBER 28, 1908 IS CORRECT AND ACCORDING TO THE FIELD NOTES THEREOF ON FILE IN THIS OFFICE, WHICH HAVE BEEN EXAMINED AND APPROVED.

U. S. RECLAMATION SERVICE
 WASHINGTON, D. C. March 15, 1915
 A. P. Davis
 DIRECTOR AND CHIEF ENGINEER

THE ACCOMPANYING DIAGRAM OF THE SURVEY OF SECTIONS 29, 30 AND 32 IN T. 19 N., R. 28 E., M. D. M., NEVADA, IS CONFORMABLE TO THE FIELD NOTES THEREOF ON FILE IN THIS OFFICE, WHICH HAVE BEEN EXAMINED AND ACCEPTED.

DEPARTMENT OF THE INTERIOR
 GENERAL LAND OFFICE
 WASHINGTON, D. C. March 22, 1915
 Commissioner

ACCESSION NO. 16055

0639

T. 19 N., R. 28 E.