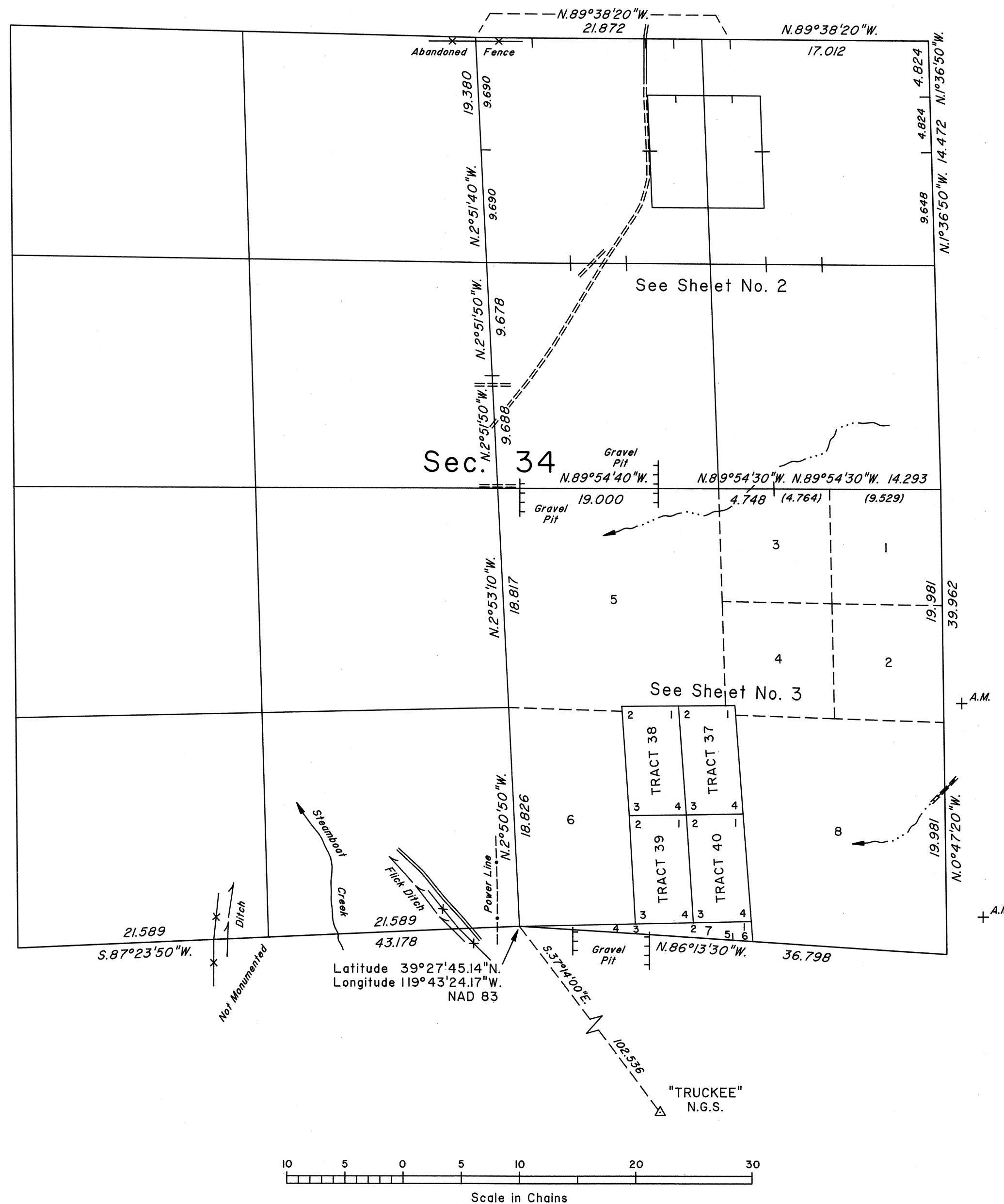
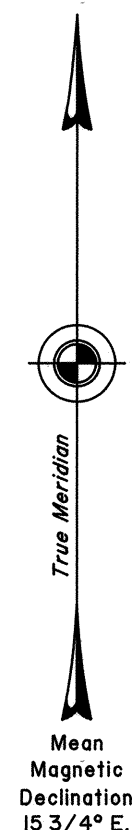


TOWNSHIP 19 NORTH, RANGE 20 EAST, OF THE MOUNT DIABLO MERIDIAN, NEVADA
CORRECTIVE DEPENDENT RESURVEY, DEPENDENT RESURVEY, SUBDIVISION AND METES-AND-BOUNDS SURVEY

OFFICIALLY FILED
NEVADA STATE OFFICE
at 10:00 AM on June 13, 2002



A history of surveys is contained in the field notes.

This plat, in three sheets, represents the corrective dependent resurvey and dependent resurvey of a portion of the south boundary, the corrective dependent resurvey and dependent resurvey of a portion of the subdivisional lines and the dependent resurvey of a portion of the subdivision of section 34, designed to restore the corners in their true original locations according to the best available evidence, the further subdivision of section 34, the metes-and-bounds survey of Tracts 37, 38, 39, and 40, and the metes-and-bounds survey of Lot 7 in section 34, Township 19 North, Range 20 East, Mount Diablo Meridian, Nevada.

Tract 37, shown hereon, represents the position and form of the E1/2NE1/4SW1/4SE1/4 of section 34, conveyed March 8, 1963 and referred to on the plat accepted March 22, 1957.

Tract 38, shown hereon, represents the position and form of the W1/2NE1/4SW1/4SE1/4 of section 34, conveyed March 8, 1963 and referred to on the plat accepted March 22, 1957.

Tract 39, shown hereon, represents the position and form of the W1/2SE1/4SW1/4SE1/4 of section 34, conveyed February 19, 1963 and referred to on the plat accepted March 22, 1957.

Tract 40, shown hereon, represents the position and form of the E1/2SE1/4SW1/4SE1/4 of section 34, conveyed March 8, 1963 and referred to on the plat accepted March 22, 1957.

Except as indicated hereon, the areas are as shown on the plat approved November 9, 1863, and the plat accepted March 22, 1957.

For those lines not showing bearings and distances refer to the official record of the 1956 resurvey.

Survey executed by David D. Morlan, Cadastral Surveyor, beginning March 29, 1994, and completed April 25, 2002, pursuant to Special Instructions dated January 14, 1994, and Supplemental Special Instructions dated April 22, 2002, for Group No. 741, Nevada.

UNITED STATES DEPARTMENT OF THE INTERIOR
BUREAU OF LAND MANAGEMENT

Reno, Nevada June 11, 2002

This plat is strictly conformable to the approved field notes, and the survey, having been correctly executed in accordance with the requirements of law and the regulations of this Bureau, is hereby accepted.

For the Director

Chief Cadastral Surveyor, Nevada

T.19 N., R.20 E., M.D.M.