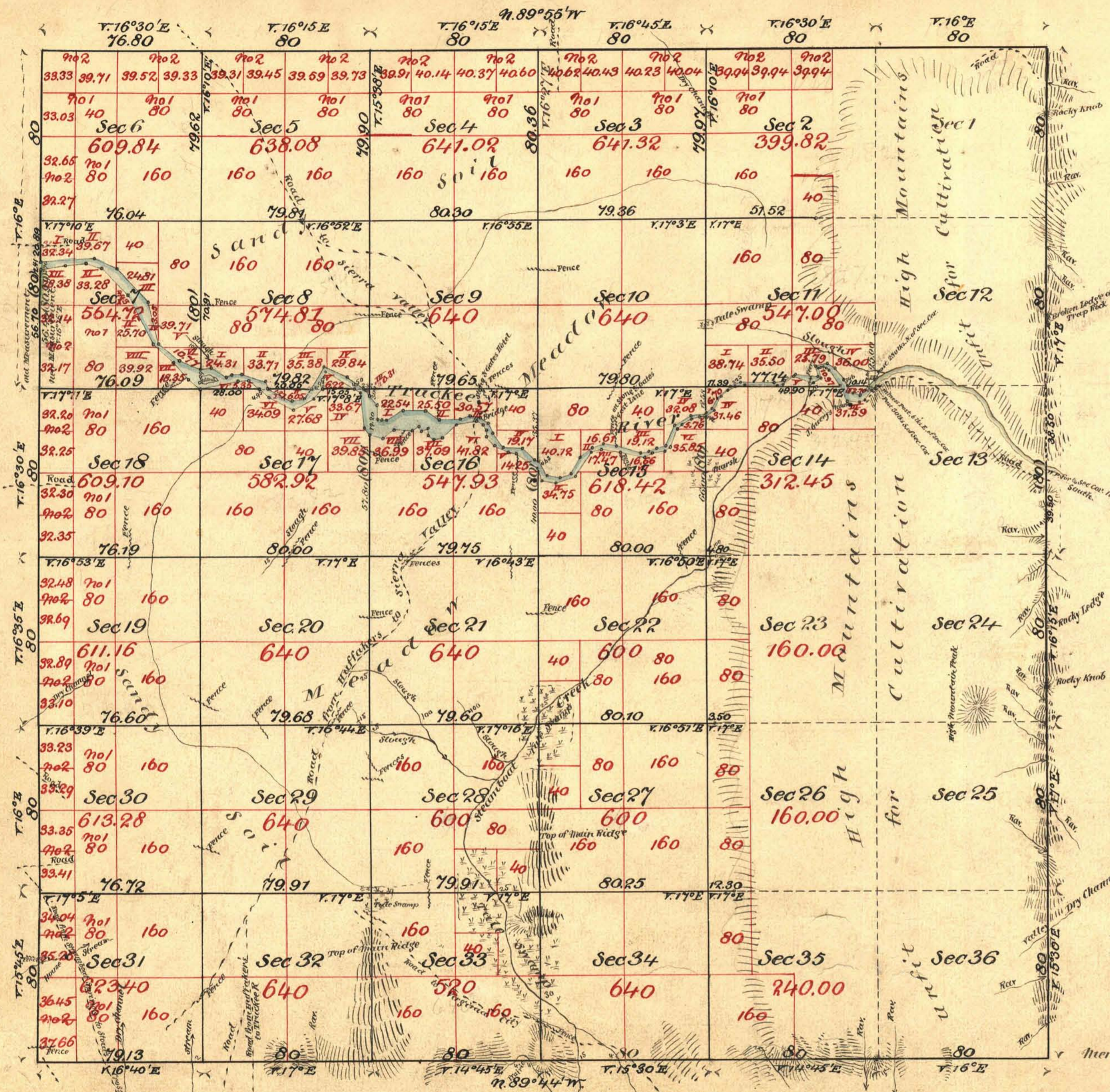


Township N<sup>o</sup> 19 North Range N<sup>o</sup> 20 East Mount Diablo Meridian



Meander of Truckee River, in Township N<sup>o</sup> 19 North, Range N<sup>o</sup> 20 East, Mount Diablo Meridian

Sec	Course	Dist	Sec	Course	Dist	Sec	Course	Dist	Sec	Course	Dist
Commencing at a post 6 links East of Cor. to Secs 11, 12, 13 and 14. Thence along right bank up stream	N. 89° 56' W	11.87	N. 65 1/2° W	13.00	N. 62 3/4° E	12.93	N. 23 1/2° E	11.00			
	" 29 1/2° "	9.00	" 48 1/2° "	6.48	" 48 1/2° "	6.00	" 57 1/2° "	9.00			
	S. 73° "	5.00	" 50 1/2° "	6.00	" 26 1/2° "	5.66	" 86 1/2° "	7.50			
	" 31 1/2° "	14.00	" 8° "	5.00	" 26 1/2° "	12.34	" 55° "	3.56			
	" 71 1/2° "	10.00	" 80° "	18.40	" 84 1/2° "	12.00	" 22 1/2° "	6.00			
	" 37 1/2° "	3.71	" 82 1/2° "	2.00	" 55 1/2° "	10.00	" 51° "	8.00			
	" 25 1/2° "	2.30	" 41 1/2° "	11.00	" 55 1/2° "	7.00	" 66 1/2° "	5.00			
	" 54 1/2° "	5.54	" 48 1/2° "	13.00	" 34 1/2° "	3.15	" 89 3/4° "	16.00			
	" 67 1/2° "	3.00	" 52 1/2° "	12.00	" 34 1/2° "	5.62	" 88 1/2° "	5.00			
	" 85 1/2° "	6.00	" 45 1/2° "	17.31	" 19 1/2° "	2.00	" 59° "	6.00			
	" 26° "	2.29	" 60 3/4° "	2.00	" 86 1/2° "	2.00	" 86 1/2° "	11.00			
	" 33 1/2° "	9.00	" 45° "	6.00	" 89 1/2° "	2.00	" 11 1/2° "	5.00			
	" 54° "	1.65	" 1 E	3.14	" 81° "	11.55	" 63 1/2° "	9.25			
	" 72° "	1.60	" 34 W	3.00	To a point on West boundary of Township	5.58 1/2° E	" 38° "	7.00			
	" 31 1/2° "	1.00	" 59 1/2° "	3.33	boundary of Township	8.58 1/2° E	" 38° "	3.85			
	" 25 1/2° "	.93	" 81° "	11.10	66 1/2° North of Cor.	10.00	" 30 1/2° "	4.15			
	" 103 1/2° E	5.00	" 46 1/2° "	2.00	to Secs 7 & 18	5.00	" 30 1/2° "	4.15			
	" 60 1/2° W	4.00	" 60 1/2° "	4.00	Commencing on West boundary of Township	8.50	" 84° "	4.00			
	" 76° "	9.26	" 59° "	3.00	boundary of Township	5.57	" 41 1/2° "	5.75			
	" 58° "	6.00	" 9° "	3.72	20.89 ch <sup>s</sup> South of Cor.	2.00	" 51 1/2° "	4.00			
	" 76 1/2° "	3.00	" 8 5/8° "	3.00	to Sec 7 & 18	3.63	" 45 1/2° "	4.00			
	" 48 1/2° "	15.50	" 82 1/2° "	3.00	along Left bank	8.89	" 9.00	Secs 11 & 13, 2.80 ch <sup>s</sup> North of Cor. to Secs 11-12-13-14			
	" 85° "	4.80	" 59 3/4° "	4.00	down stream	4.83 1/2° "	" 1.83				
	" 65 1/2° "	4.00	" 89 1/2° "	9.00	" 85 1/2° E	26.00	" 65 1/2° "	2.00			
	" 51 1/2° "	4.00	" 56 1/2° "	6.00	" 56 1/2° "	12.00	" 34 1/2° "	6.43			
	" 55 1/2° "	7.50	" 74° "	6.58	" 43 1/2° "	22.00	" 75 1/2° "	6.00			
	" 54 1/2° "	4.68	" 31° "	4.00	" 13° "	20.35	" 71 1/2° "	2.00			
	" 52 1/2° "	3.00	" 5 1/2° "	17.00	" 51° "	13.00	" 26° "	9.00			
	" 47 1/2° "	4.00	" 58 1/2° "	3.50	" 51° "	10.55	" 64° "	6.84			
	" 66° "	5.00	" 58 1/2° "	15.30	" 8 1/2° "	5.00	" 74 1/2° "	5.59			
	" 42 1/2° "	3.50	" 8 1/2° "	3.00	" 8 1/2° "	8.62	" 84 1/2° "	6.48			
	" 20 1/2° "	2.00	" 5 1/2° "	3.00	" 71° "	3.00	" 74 1/2° "	12.00			
	" 34° "	3.00	" 39 1/2° "	.46	" 87 1/2° "	5.00	" 87 1/2° "	4.00			
	" 76 1/2° "	6.00	" 39 1/2° "	6.80	" 8 1/2° "	12.00	" 65° "	4.00			
	" 67 1/2° "	4.00	" 62 1/2° "	10.50	" 23 1/2° "	4.00	" 79 1/2° "	4.41			
		144.36		222.29		295.70		236.59			

Aggregate Area of Public Land 16495.27 Acres  
 Estimated " " Unsurveyed Mountain Land, and of Truckee River and Tule Swamp 6398.53 "  
 Aggregate 22893.80 "

Township line colored green, resurveyed, and changed in present account

Meridian lines not otherwise noted, run with a Variation of 16° 10' E.

Surveys Designated	By whom Surveyed	Date of Contract	Amount of Surveys	When surveyed
East boundary of Township	B. Ives	July 16 <sup>th</sup> 1861	6 miles 0000 0000	1861
North, South and part of West boundary	J. S. Lamson	September 14 <sup>th</sup> 1861	17 " 56 " 82 "	"
Rest of West boundary (green)	E. H. Dyer	October 6 <sup>th</sup> 1862	00 " 20 " 10 "	1863
Section lines	" " "	" " "	45 " 79 " 71 "	"
Meander lines	" " "	" " "	12 " 75 " 65 "	July 4 <sup>th</sup> 1863

The above Map of Township N<sup>o</sup> 19 North, Range N<sup>o</sup> 20 East, Mount Diablo Meridian is strictly conformable to the field notes of the survey thereof on file in this office, which have been examined and approved by the Surveyor General's Office, San Francisco, California, November 9<sup>th</sup> 1863

*E. H. Dyer*  
 Sur. Gen., Cal.