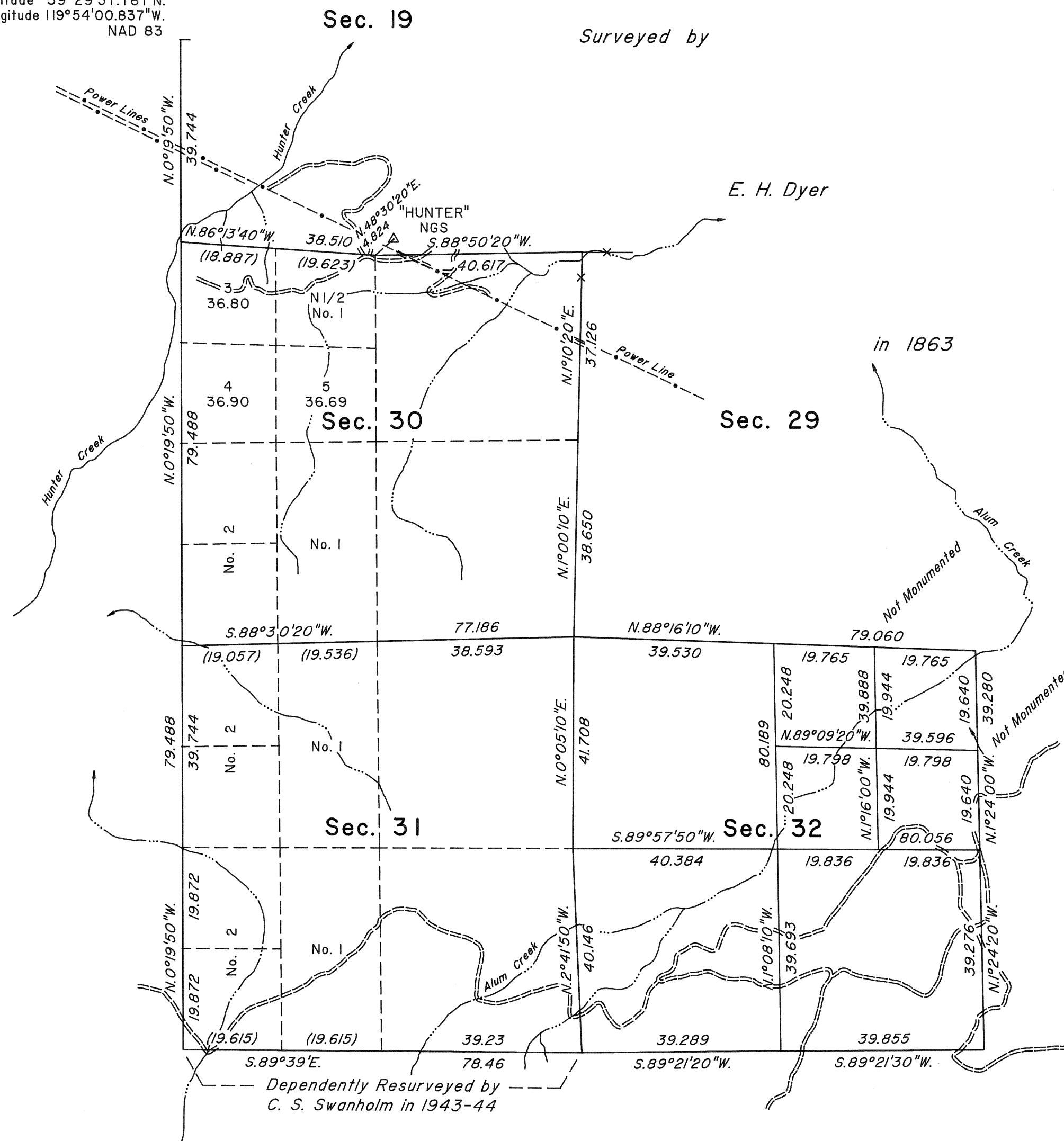
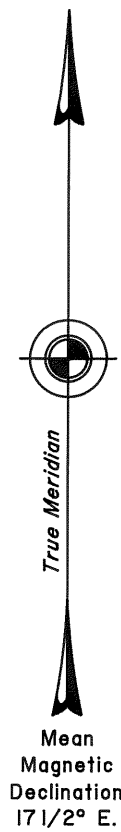


# TOWNSHIP 19 NORTH, RANGE 19 EAST, OF THE MOUNT DIABLO MERIDIAN, NEVADA

## DEPENDENT RESURVEY AND SUBDIVISION

Latitude 39°29'51.181"N.  
Longitude 119°54'00.837"W.  
NAD 83



A history of surveys is contained in the field notes.

This plat represents the dependent resurvey of portions of the south and west boundaries and a portion of the subdivisional lines designed to restore the corners in their true original locations according to the best available evidence, and the subdivision of section 32, Township 19 North, Range 19 East, Mount Diablo Meridian, Nevada.

Except as indicated hereon, the lottings and areas are as shown on the plat approved October 13, 1863.

Survey executed by Joseph A. Bastian, Cadastral Surveyor, and Clay W. Morrow, Surveying Technician, beginning August 1, 2005, and completed January 25, 2006, pursuant to Special Instructions dated August 22, 1997, and Amended Special Instructions dated July 27, 2005, for Group No. 768, Nevada.

UNITED STATES DEPARTMENT OF THE INTERIOR  
BUREAU OF LAND MANAGEMENT

Reno, Nevada July 21, 2006

This plat is strictly conformable to the approved field notes, and the survey, having been correctly executed in accordance with the requirements of law and the regulations of this Bureau, is hereby accepted.

For the Director

Chief Cadastral Surveyor, Nevada

