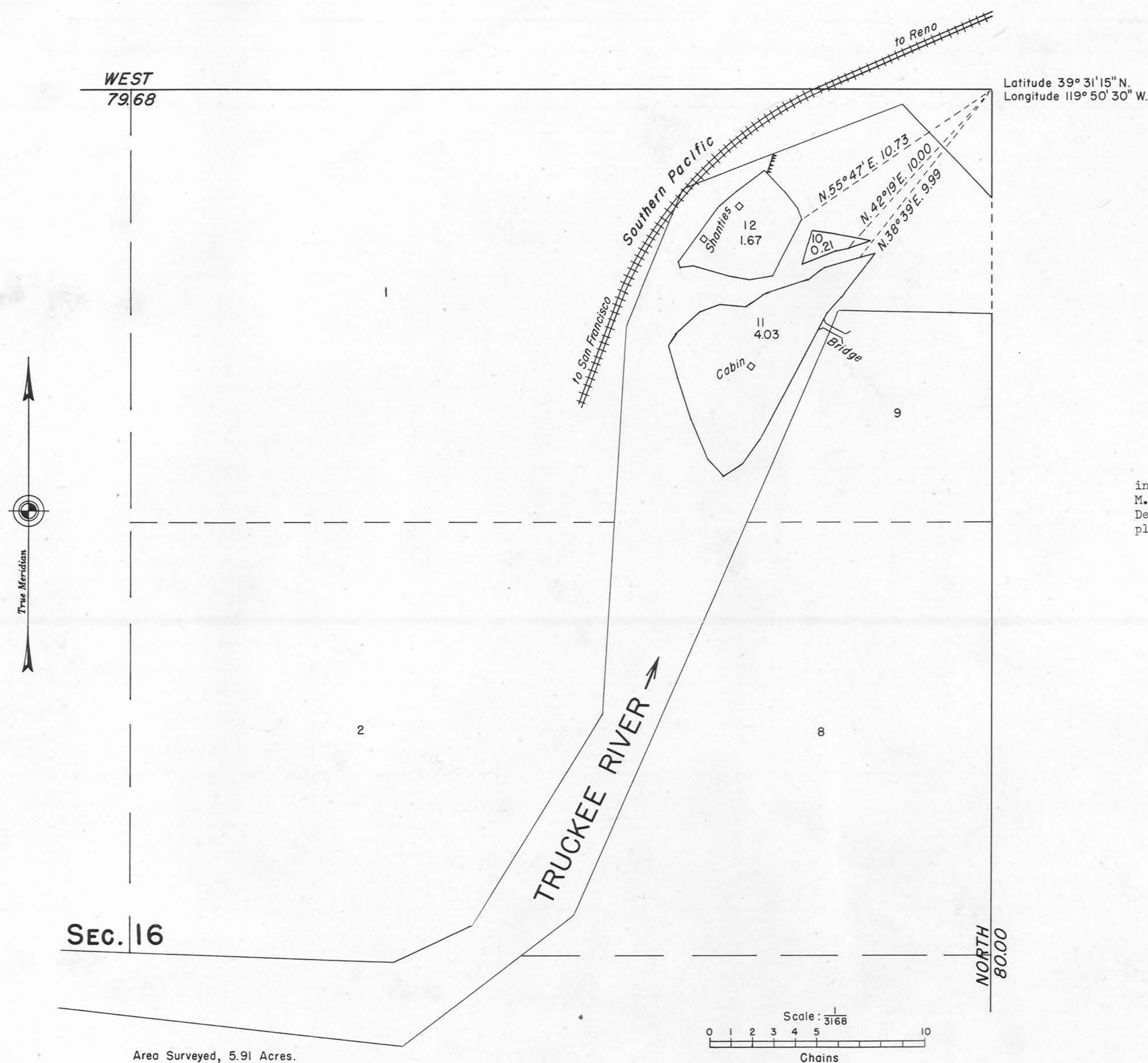


ORIGINAL

TOWNSHIP 19 NORTH, RANGE 19 EAST, OF THE MOUNT DIABLO MERIDIAN, NEVADA.  
ISLANDS IN THE TRUCKEE RIVER IN SECTION 16



This plat represents the survey of three islands in the Truckee River, sec. 16, T. 19 N., R. 19 E., M.D.M., which were omitted from the original survey by Deputy Surveyor E. H. Dyer in 1863 as shown upon the plat approved October 13, 1863.

Survey executed by James W. Hardison September 26 to 30, 1949, under special instructions for Group 354, dated August 5, 1949.

UNITED STATES DEPARTMENT OF THE INTERIOR  
BUREAU OF LAND MANAGEMENT  
Washington, D. C., February 9, 1950  
This plat is strictly conformable to the approved field notes, and the survey, having been correctly executed in accordance with the requirements of law and the regulations of this Bureau, is hereby accepted.

For the Director  
*William F. Richards*  
Chief, Branch of Surveys

REC.

438

0095-9

T19N, R19E.