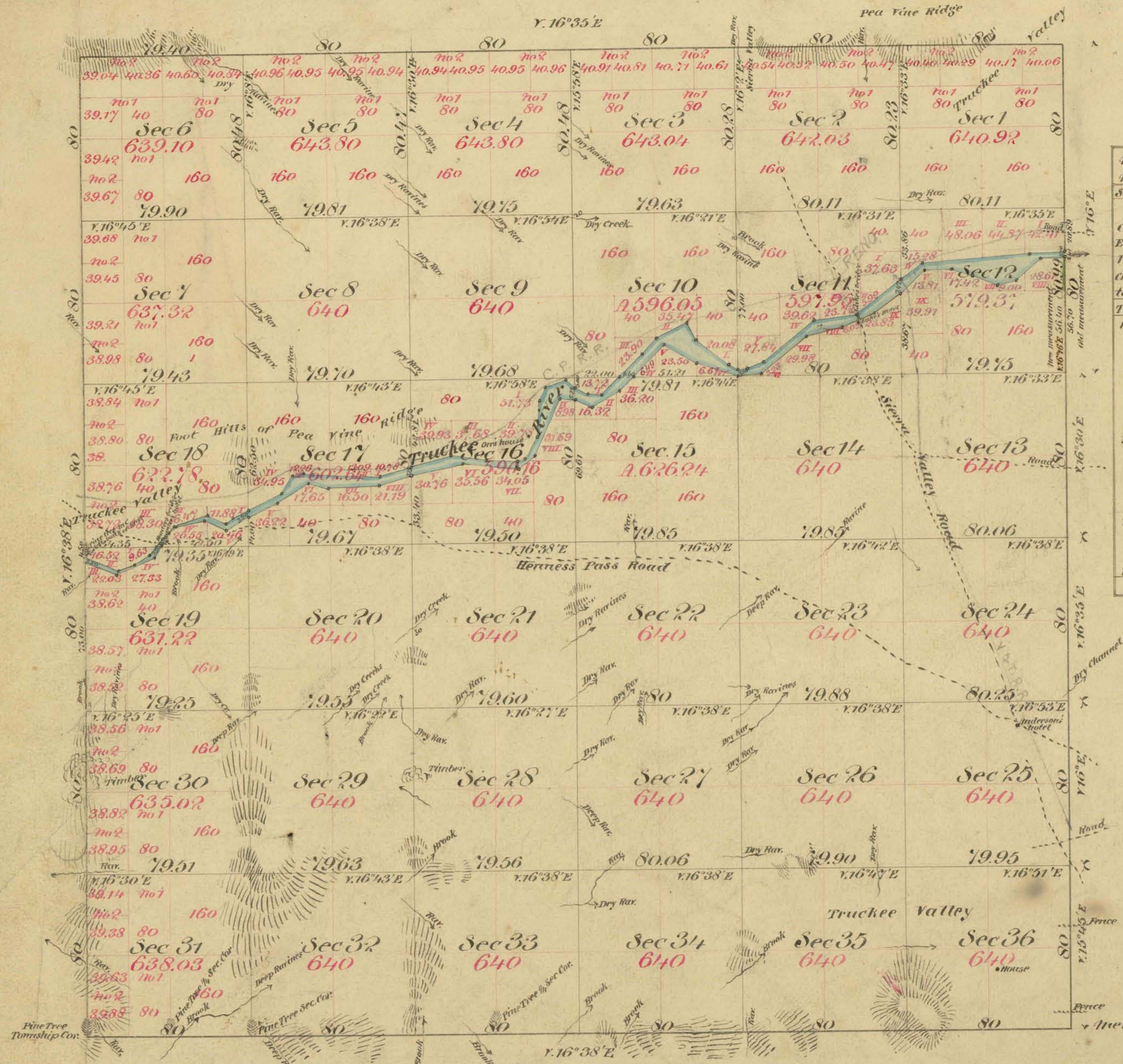


Reno

Original



Meanders of Truckee River, in Township No. 19 North, Range No. 19 East, Mount Diablo Meridian

Sec	Course	Dist	Sec	Course	Dist	Sec	Course	Dist	Sec	Course	Dist
Right Bank			Left Bank								
15	S. 59 1/2° W	15.50	15	N. 63 1/2° W	6.90						
Commencing on the East boundary of Sec 16			Commencing on the East boundary of Sec. 16								
16	N. 83 3/4°	7.15	16	N. 43 1/2°	6.00						
at a point 56.40 ch ^s North of Corner to Secs 12 & 13.			at a point 20.89 ch ^s South of Corner to Secs 12 & 13.								
Thence up stream.			Thence up stream.								
12	S. 84 1/2° W	12.00	17	N. 73 1/2°	16.50	12	S. 87 1/2° W	17.00	17	N. 88°	15.45
"	48°	16.00	"	87 1/2°	25.00	"	84 1/2°	52.00	"	80 3/4°	17.00
"	74 1/2°	9.00	"	N. 77 1/2°	10.00	"	51 3/4°	13.80	"	S. 74 1/2°	20.40
"	N. 69 1/2°	13.00	"	S. 58 3/4°	18.00	11	N. 51 3/4°	27.20	17	N. 74 1/2°	15.60
"	74 1/2°	10.52	"	N. 63 3/4°	15.62	"	83 1/4°	21.00	"	N. 88 1/2°	23.00
"	S. 89 3/4°	13.00	18	N. 57 3/4°	12.17	"	51 1/2°	32.00	"	N. 79 1/2°	4.00
"	44°	16.70	"	N. 65°	12.00	"	72°	8.88	"	S. 75 3/4°	5.25
11	N. 54 1/2°	16.00	"	S. 77 3/4°	14.50	"	82°	4.61	"	S. 35 3/4°	10.00
"	67 3/4°	17.00	"	N. 50 3/4°	4.00	10	N. 59 1/2°	5.00	"	N. 64 1/2°	18.34
"	76 1/2°	18.00	"	N. 32 1/2°	8.00	"	53°	20.00	18	N. 64 1/2°	7.82
"	50°	29.00	19	N. 32 1/2°	6.00	"	26 1/2°	9.56	"	N. 51°	4.75
"	88 1/2°	11.92	"	N. 65 1/2°	20.40	"	S. 63 1/2°	16.42	"	N. 64 1/2°	10.00
10	N. 71 1/2°	21.00	"	N. 66 1/2°	16.30	"	41°	10.55	"	S. 72°	16.50
"	59 3/4°	18.50	To a point on West bound.			"	45 3/4°	15.88	"	48°	8.72
"	S. 44 1/2°	22.00	of Township 73 ch ^s North			15	N. 45 1/2°	12.54	"	N. 35 3/4°	5.50
15	"	9.50	of Cor. to Secs 19 & 30			19	N. 86°	6.20	19	N. 35 3/4°	4.50
			253.14			303.79			273.34		
									303.79		
									253.14		
									295.93		
									1126.20 of Township 4.50 ch ^s S. of Cor. to Secs 19 & 19		
									295.93		

Aggregate Area of Public Land	22769.47 Acres
Estimated " " River "	256.13 "
Aggregate	23025.60 "

Township line colored green, re-surveyed, and changed in present

American tires not otherwise noted, run with a Variation of 16° 16' E.

Surveys Designated	By whom surveyed	Date of Contract	Amount of surveys	When surveyed	<i>79 Con.</i>
Part of East boundary of Township	J. S. Lawson	September 14 th 1861	5 miles 60 ch ^s 89 ths	1861	<i>B</i>
Rest of E. Boundary (Re-survey)	E. H. Dyer	October 6 th 1861	17 " 20 " 10 "	1863	<i>D</i>
Rest of Township lines	E. H. Dyer	October 6 th 1861	17 " 19 " 40 "	1863	<i>D</i>
Section lines	" " "	" " "	59 " 15 " 04 "	"	<i>H</i>
Meanders	" " "	" " "	74 " 06 " 20 "	July 18 th 1863	<i>F</i>

The above Map of Township No. 19 North, Range No. 19 East, Mount Diablo Meridian is strictly conform to the field notes of the surveys thereof on file in this Office, which have been examined and approved by the Surveyor General's Office, San Francisco, California.

October 13th 1863

E. H. Dyer
Surv. Gen. Cal.

VD