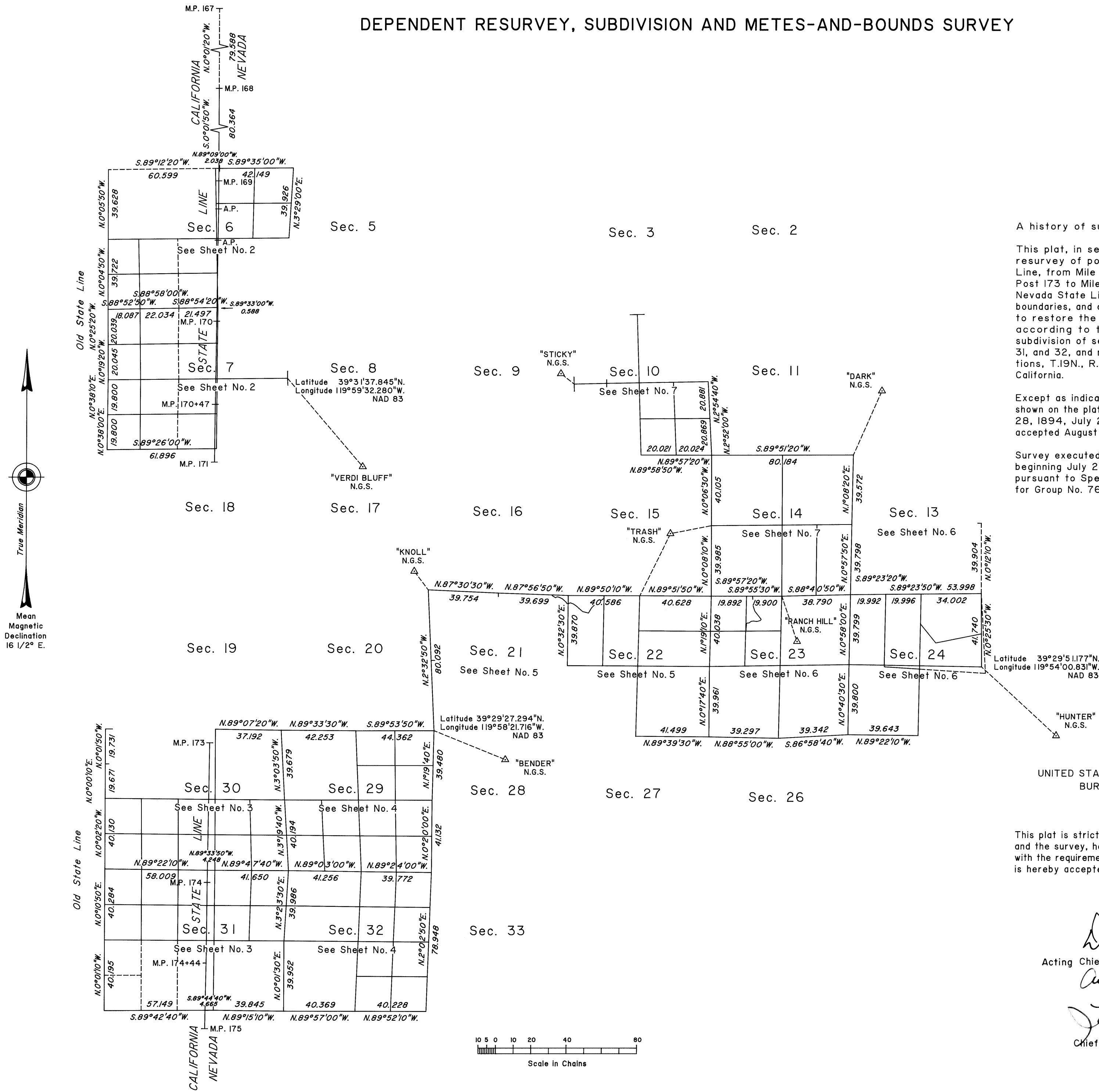


TOWNSHIP 19 NORTH, RANGE 18 EAST, OF THE MOUNT DIABLO MERIDIAN, NEVADA AND CALIFORNIA

DEPENDENT RESURVEY, SUBDIVISION AND METES-AND-BOUNDS SURVEY

OFFICIALLY FILED
NEVADA STATE OFFICE
at 10:00 AM on August 13, 2004



A history of surveys is contained in the field notes.

This plat, in seven sheets, represents the dependent resurvey of portions of the California-Nevada State Line, from Mile Post 168 to Mile Post 171, and from Mile Post 173 to Mile Post 175, portions of the old California-Nevada State Line, portions of the south, east and north boundaries, and a portion of the subdivisional lines designed to restore the corners in their true original locations according to the best available evidence, and the subdivision of sections 6, 7, 10, 14, 22, 23, 24, 29, 30, 31, and 32, and metes-and-bounds surveys in certain sections, T.19N., R.18E., Mount Diablo Meridian, Nevada and California.

Except as indicated hereon, the lottings and areas are as shown on the plats approved September 27, 1865, December 28, 1894, July 2, 1915, and March 18, 1920, and the plat accepted August 8, 1979.

Survey executed by David L. Dukleth, Cadastral Surveyor, beginning July 29, 1997, and completed March 10, 2003, pursuant to Special Instructions dated August 22, 1997, for Group No. 768, Nevada, and Group No. 1280, California.

UNITED STATES DEPARTMENT OF THE INTERIOR
BUREAU OF LAND MANAGEMENT

Reno, Nevada
Sacramento, California

This plat is strictly conformable to the approved field notes, and the survey, having been correctly executed in accordance with the requirements of law and the regulations of this Bureau, is hereby accepted.

For the Director

David J. Clark
Acting Chief Cadastral Surveyor, Nevada
August 5, 2004
James J. Binkley
Chief Cadastral Surveyor, California

T.19N., R.18E., M.D.M.