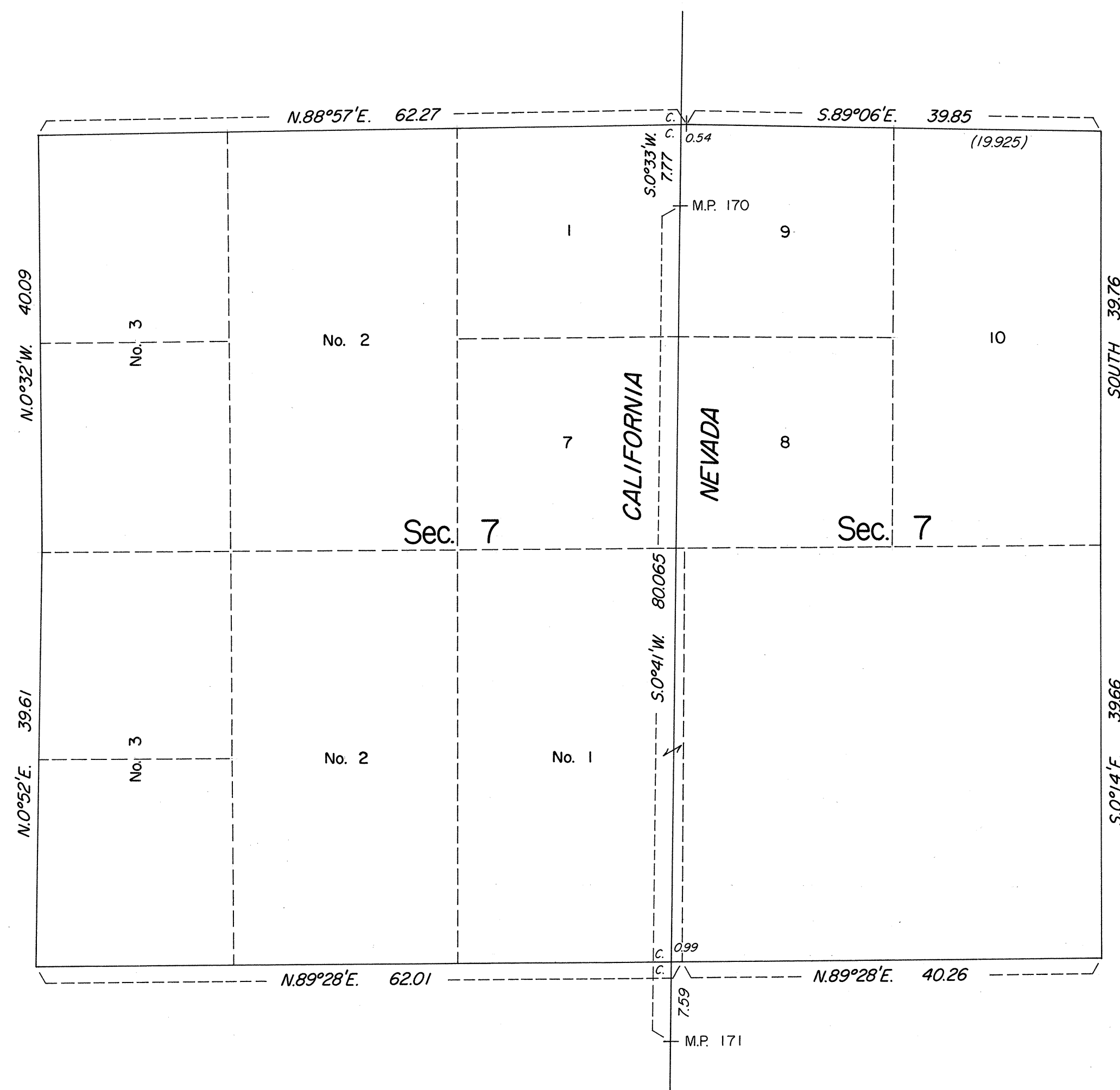
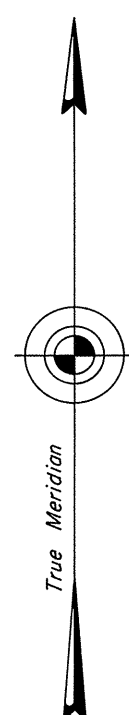


ORIGINAL

OFFICIALLY FILED
NEVADA STATE OFFICE
7:30AM OCT 1 1979

TOWNSHIP 19 NORTH, RANGE 18 EAST, OF THE MOUNT DIABLO MERIDIAN, NEVADA
SUPPLEMENTAL PLAT OF SECTION 7



This plat showing a correction of the lotting in sec. 7, T. 19 N., R. 18 E., Mount Diablo Meridian, Nevada, is based on the plats approved September 27, 1865, December 28, 1894 and July 2, 1915.

UNITED STATES DEPARTMENT OF THE INTERIOR
BUREAU OF LAND MANAGEMENT
Denver, Colorado August 8, 1979

This plat, showing amended lottings, is based upon the official records and, having been correctly prepared in accordance with the regulations of this Bureau, is hereby accepted.

For the Director

Chief, Cadastral Survey
Examination and Approval Staff

