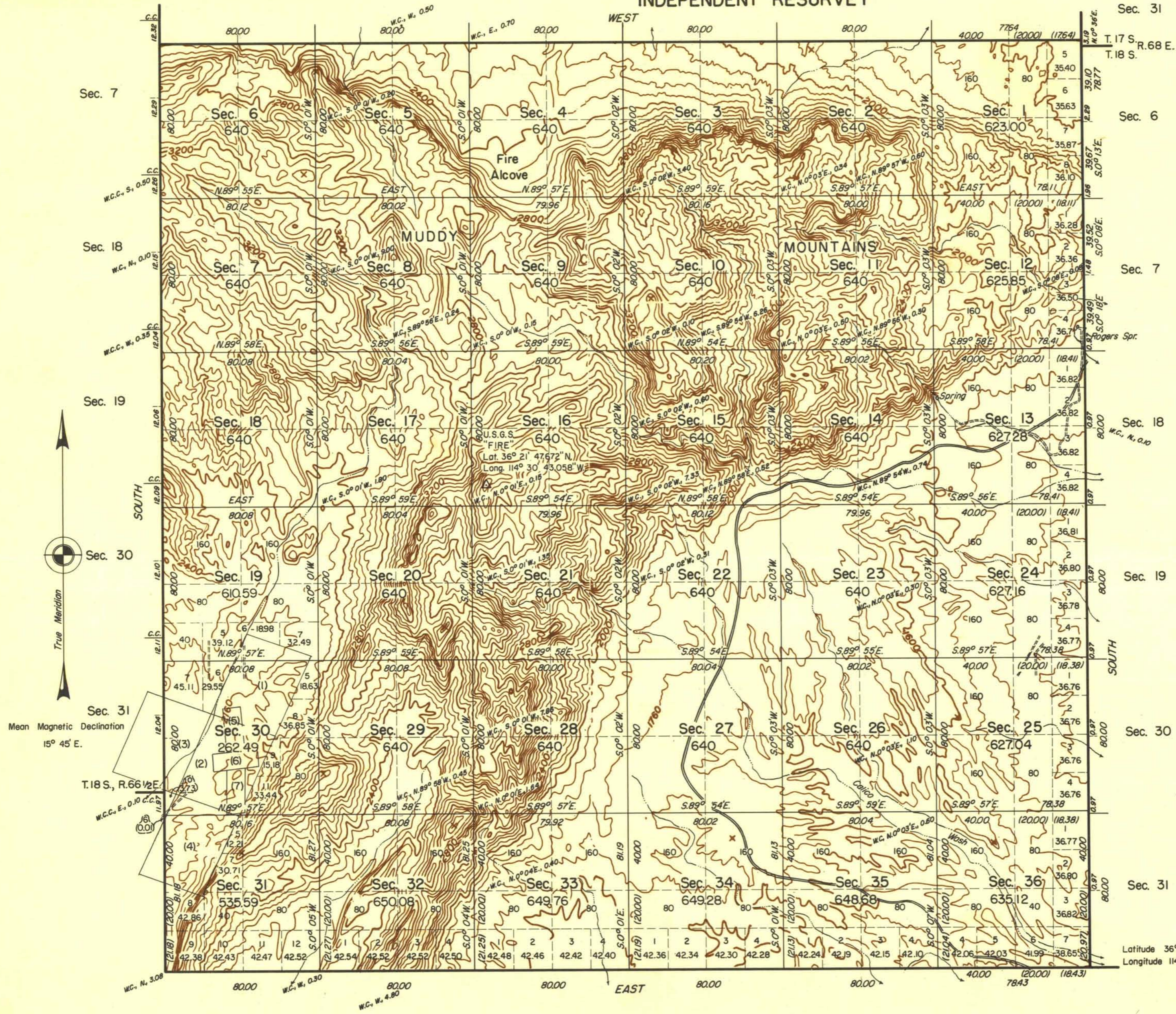


TOWNSHIP 18 SOUTH, RANGE 67 EAST, OF THE MOUNT DIABLO MERIDIAN, NEVADA

INDEPENDENT RESURVEY



SURVEYED MINING CLAIMS

Index No.	Survey No.	Name of Claim
1	4648	COTTON BALL No. 4 PLACER
2	4648	COTTON BALL PLACER
3	4648	COTTON BALL No. 3 PLACER
4	4648	COTTON BALL No. 2 PLACER
5	4622	MAYFLOWER
6	4622	EAST A.B.A.
7	4622	EAST A.B.A. EXTENSION

History of earlier surveys is contained in the field notes.

This plat represents the dependent resurvey of the west boundary of T. 18 S., R. 68 E., designed to restore the corners in their original locations according to the best available evidence and an independent resurvey of the south and west boundaries and subdivisional lines of T. 18 S., R. 67 E., Mount Diablo Meridian, Nevada, superseding, as far as public lands are concerned, all such similar units that are shown upon plat approved September 18, 1882.

Survey executed by Dell Cazier, January 23 to March 27, 1959 under special instructions dated June 5, 1958 for Group 373, Nevada.

Topography on this plat furnished by the U. S. Geological Survey. For additional topography along surveyed lines, reference is made to the field notes. Contour interval is 80 feet.

Latitude 36° 19' 02" N.
Longitude 114° 26' 33" W.

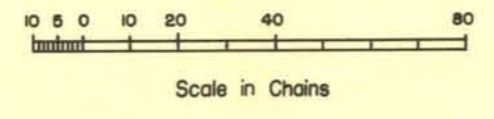
UNITED STATES DEPARTMENT OF THE INTERIOR
BUREAU OF LAND MANAGEMENT
Washington, D.C. September 27, 1961

This plat is strictly conformable to the approved field notes, and the survey, having been correctly executed in accordance with the requirements of law and the regulations of this Bureau, is hereby accepted.

For the Director

[Signature]
Chief, Division of Engineering

Area Resurveyed, -- 22,491.92 Acres.
Area Segregated, --- 521.13 Acres.
Total Area, ----- 23,013.05 Acres.



3155-a

T. 18 S., R. 67 E.