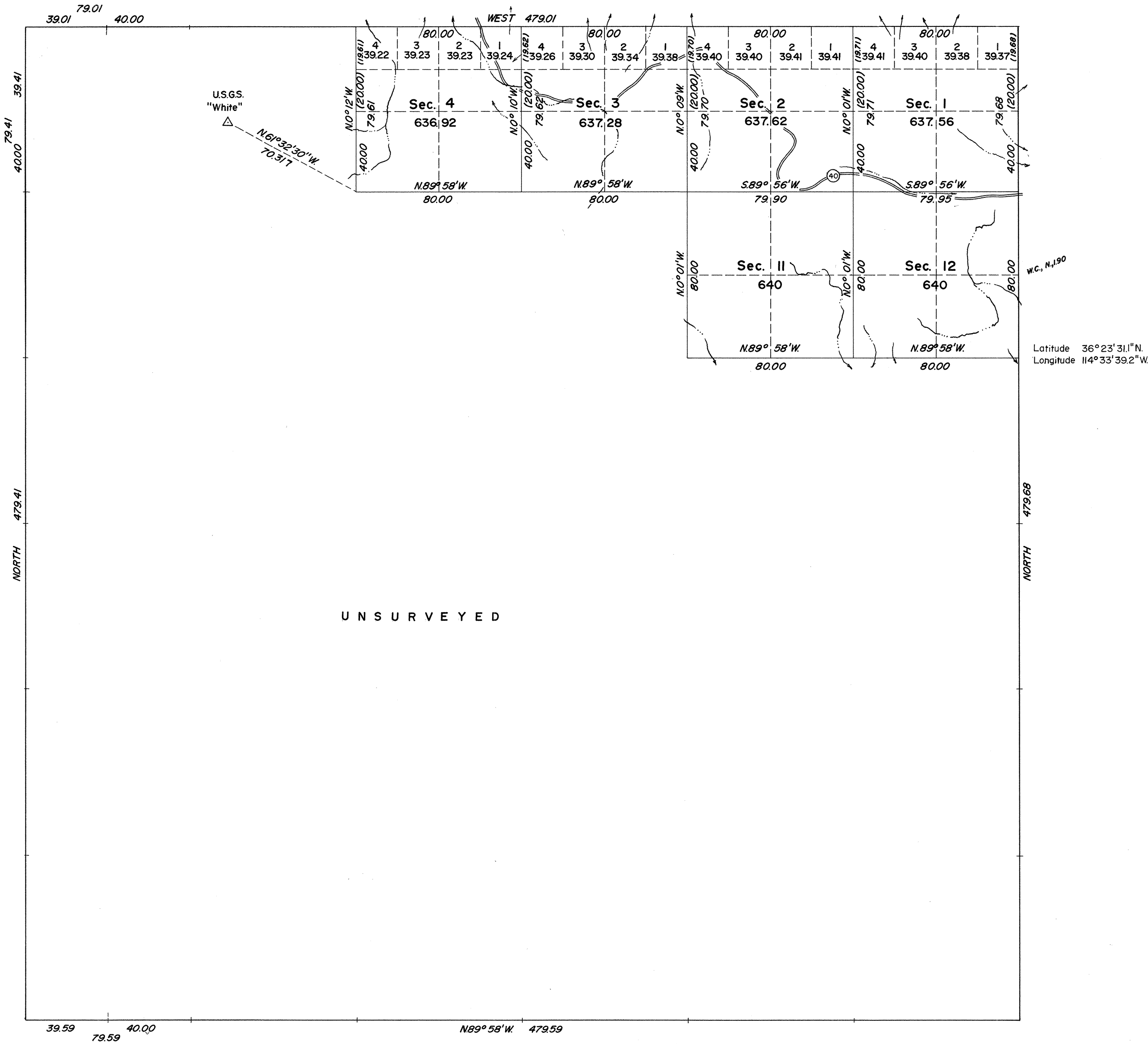


TOWNSHIP 18 SOUTH, RANGE 66 EAST, OF THE MOUNT DIABLO MERIDIAN, NEVADA



UNITED STATES DEPARTMENT OF THE INTERIOR
BUREAU OF LAND MANAGEMENT
Washington, D. C. February 6, 1964

This plat is strictly conformable to the approved field notes, and the survey, having been correctly executed in accordance with the requirements of law and the regulations of this Bureau, is hereby accepted.

For the Director

E. J. Livingston
Chief, Division of Engineering