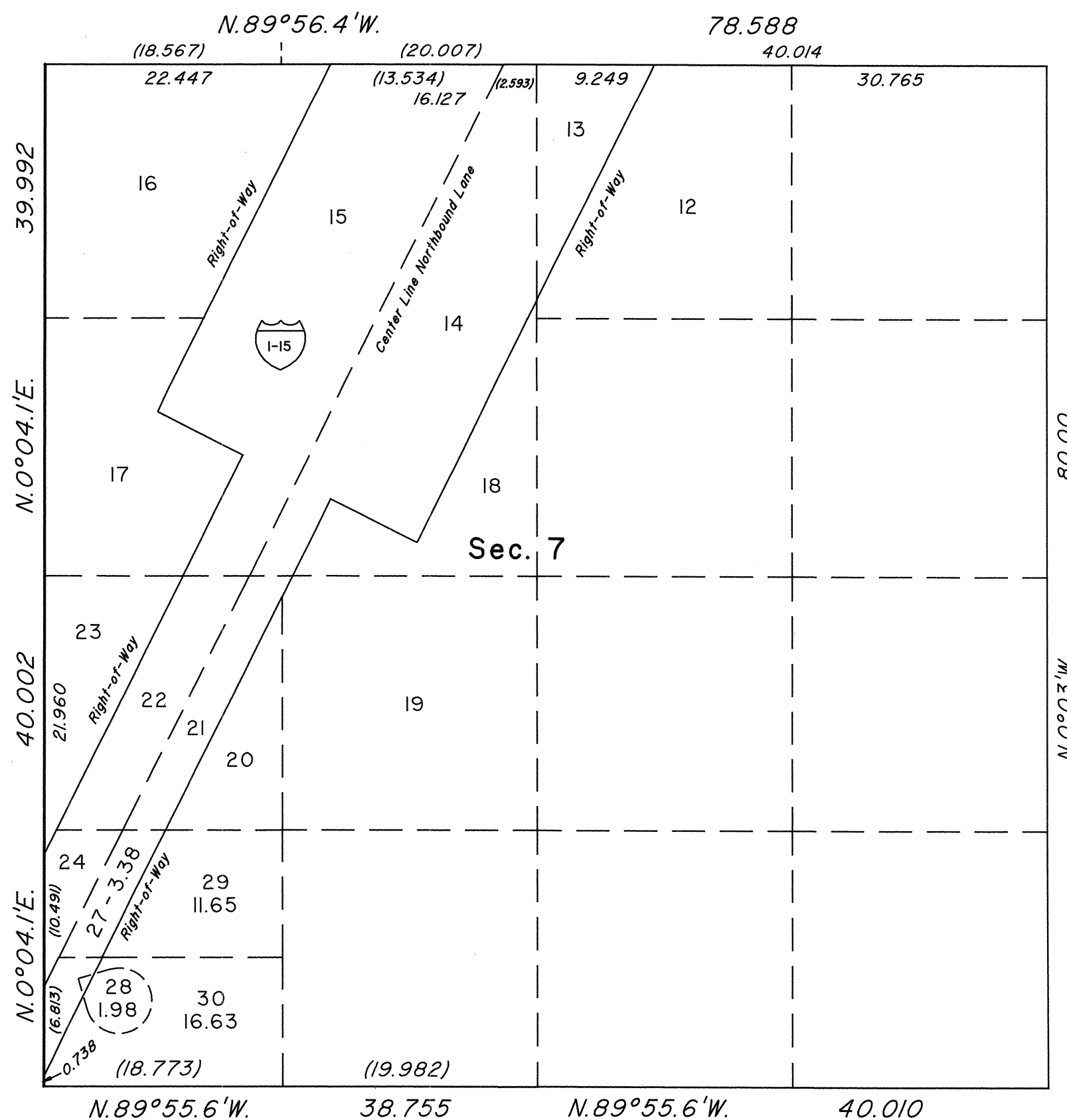


TOWNSHIP 18 SOUTH, RANGE 64 EAST, OF THE MOUNT DIABLO MERIDIAN, NEVADA
SUPPLEMENTAL PLAT OF SECTION 7

OFFICIALLY FILED
NEVADA STATE OFFICE
at 10:00 AM on FEBRUARY 17, 1995



This plat, showing amended lottings in sec. 7, Township 18 South, Range 64 East, Mount Diablo Meridian, Nevada, is based upon the plats accepted May 11, 1945 and April 15, 1993.

UNITED STATES DEPARTMENT OF THE INTERIOR
BUREAU OF LAND MANAGEMENT

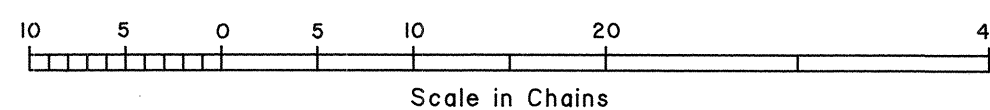
Reno, Nevada February 14, 1995

This plat, showing amended lottings, is based upon the official records, and having been correctly prepared in accordance with the regulations of this Bureau, is hereby accepted.

For the Director

John S. Parish

Chief Cadastral Surveyor, Nevada



R&J

RHT

T.18S., R.64E., M.D.M.