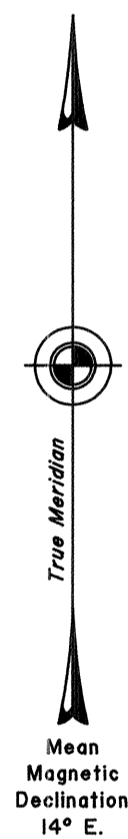
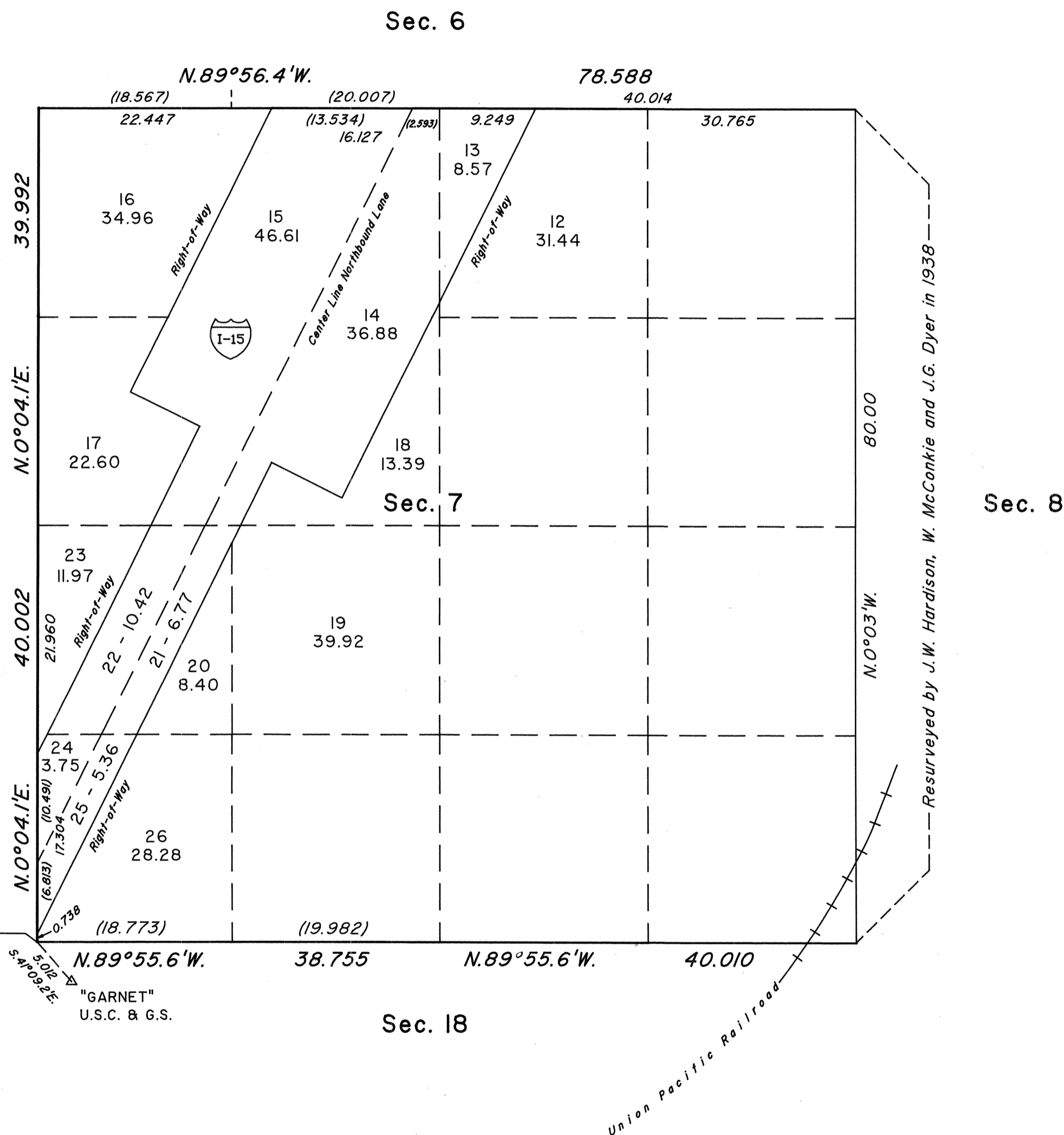


TOWNSHIP 18 SOUTH, RANGE 64 EAST, OF THE MOUNT DIABLO MERIDIAN, NEVADA
DEPENDENT RESURVEY



Latitude 36°23'31.52"N.
Longitude 114°52'58.63"W.
NAD 27



History of the earlier surveys is contained in the field notes.

This plat represents the dependent resurvey of a portion of the west boundary and a portion of the subdivisional lines of T. 18 S., R. 64 E., Mount Diablo Meridian, Nevada, designed to restore the corners in their true original locations according to the best available evidence.

Certain lottings were computed using State of Nevada, Department of Highways Right-of-Way data for Interstate 15 (Project No. I-015-(7)43), through ties to Right-of-Way monuments made during the course of this survey.

Except as indicated hereon, the lottings and areas are as shown on the plat accepted May 11, 1945.

Survey executed by Robert A. Pratt, Cadastral Surveyor, beginning November 3, 1992 and completed November 13, 1992, pursuant to Special Instructions dated November 2, 1992, for Group No. 732, Nevada.

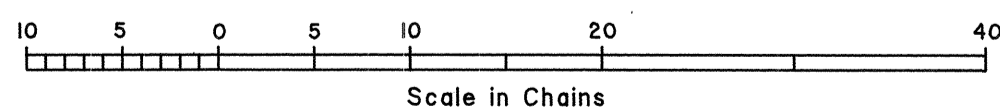
UNITED STATES DEPARTMENT OF THE INTERIOR
BUREAU OF LAND MANAGEMENT

Reno, Nevada April 15, 1993

This plat is strictly conformable to the approved field notes, and the survey, having been correctly executed in accordance with the requirements of law and the regulations of this Bureau, is hereby accepted.

For the Director

Chief Cadastral Surveyor, Nevada



R&P

RHT