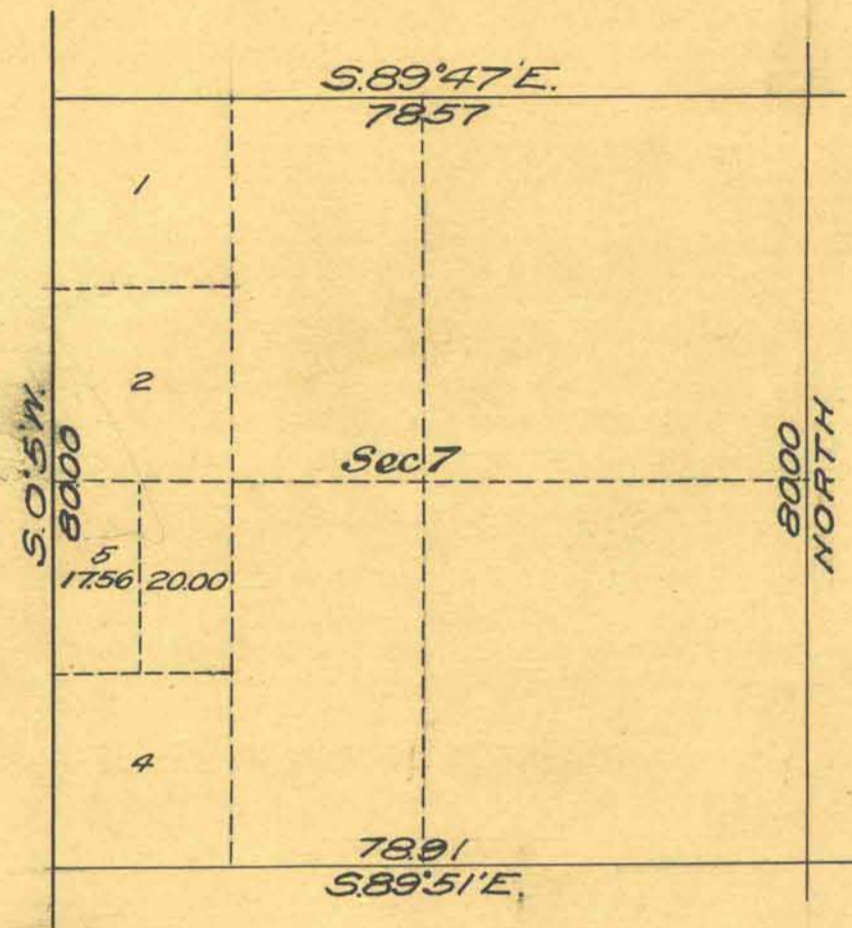


Supplemental Plat of Section 7 of Township N°18 South Range N°64 East M^tDiablo Meridian Nevada

Scale 20 chs. to 1 inch



This supplemental plat is prepared in compliance with instructions contained the G.L.O. letter Carson City 013345 "E" J.A.D. dated April 25, 1922, in order to accomodate Mineral Entry Carson City 013345, for the Kelly placer mining claim

This supplemental plat of Sec. 7, T. 18 S., R. 64 E. M.D.B. & M. Nevada, creating lot 5 and $\frac{1}{4}$ NW $\frac{1}{4}$ of said section thereby superseding lot 3, as shown on plat of T. 18 S., R. 64 E., dated September 18, 1882, is strictly conformable to the official field notes of the survey thereof on file in this office.

Office of U.S. Surveyor General)
 Reno, Nevada) U.S. Surveyor General for
 May 5, 1922) Nevada.

J. S. Golder

J.R.C.

2