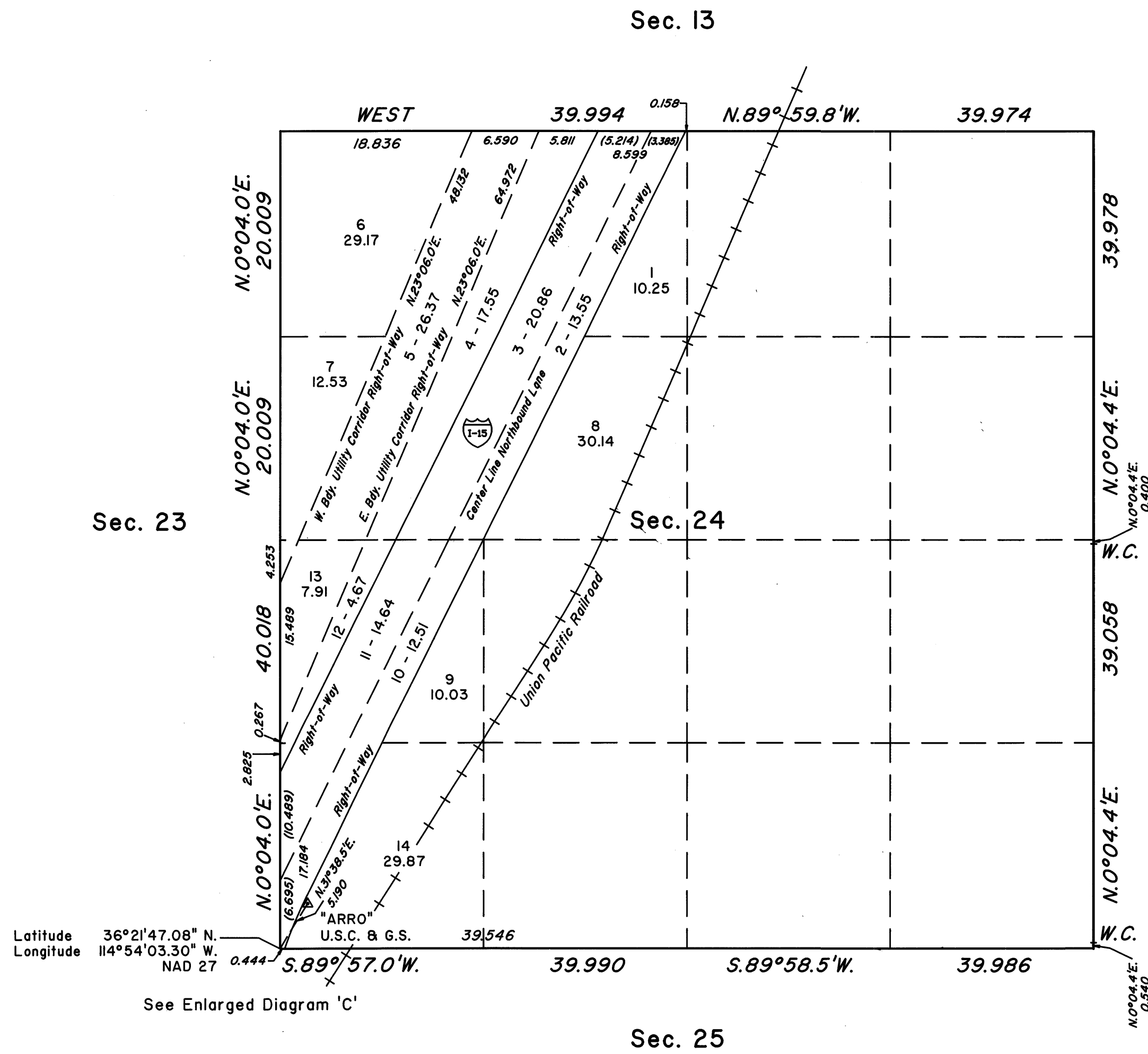
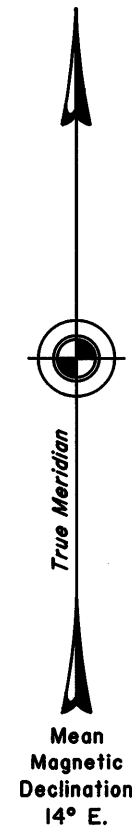


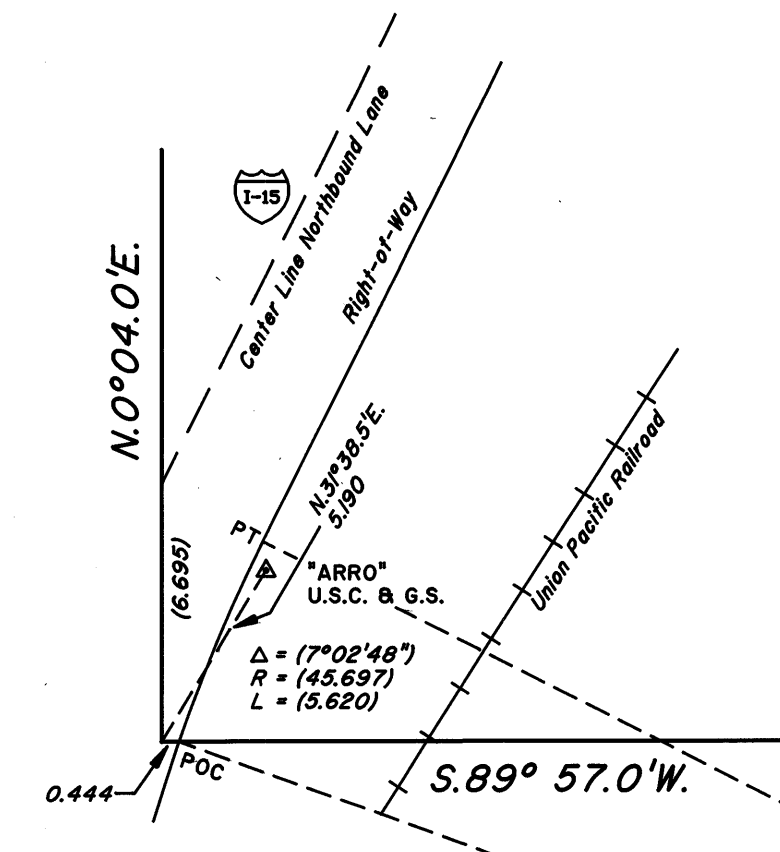
TOWNSHIP 18 SOUTH, RANGE 63 EAST, OF THE MOUNT DIABLO MERIDIAN, NEVADA  
DEPENDENT RESURVEY

OFFICIALLY FILED  
NEVADA STATE OFFICE  
at 10:00 AM on APRIL 20, 1993



Latitude 36°21'47.08" N.  
Longitude 114°54'03.30" W.  
NAD 27

See Enlarged Diagram 'C'



Enlarged Diagram 'C'

Reference should be made to Sheet No. 1 for survey information.

UNITED STATES DEPARTMENT OF THE INTERIOR  
BUREAU OF LAND MANAGEMENT

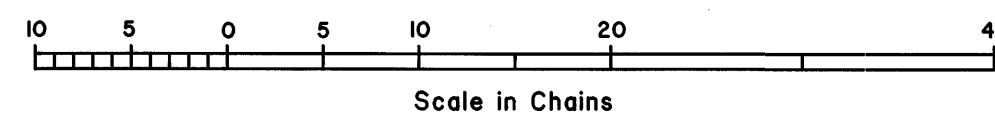
Reno, Nevada

April 15, 1993

This plat is strictly conformable to the approved field notes, and the survey, having been correctly executed in accordance with the requirements of law and the regulations of this Bureau, is hereby accepted.

For the Director

Chief Cadastral Surveyor, Nevada



R&D

RHT