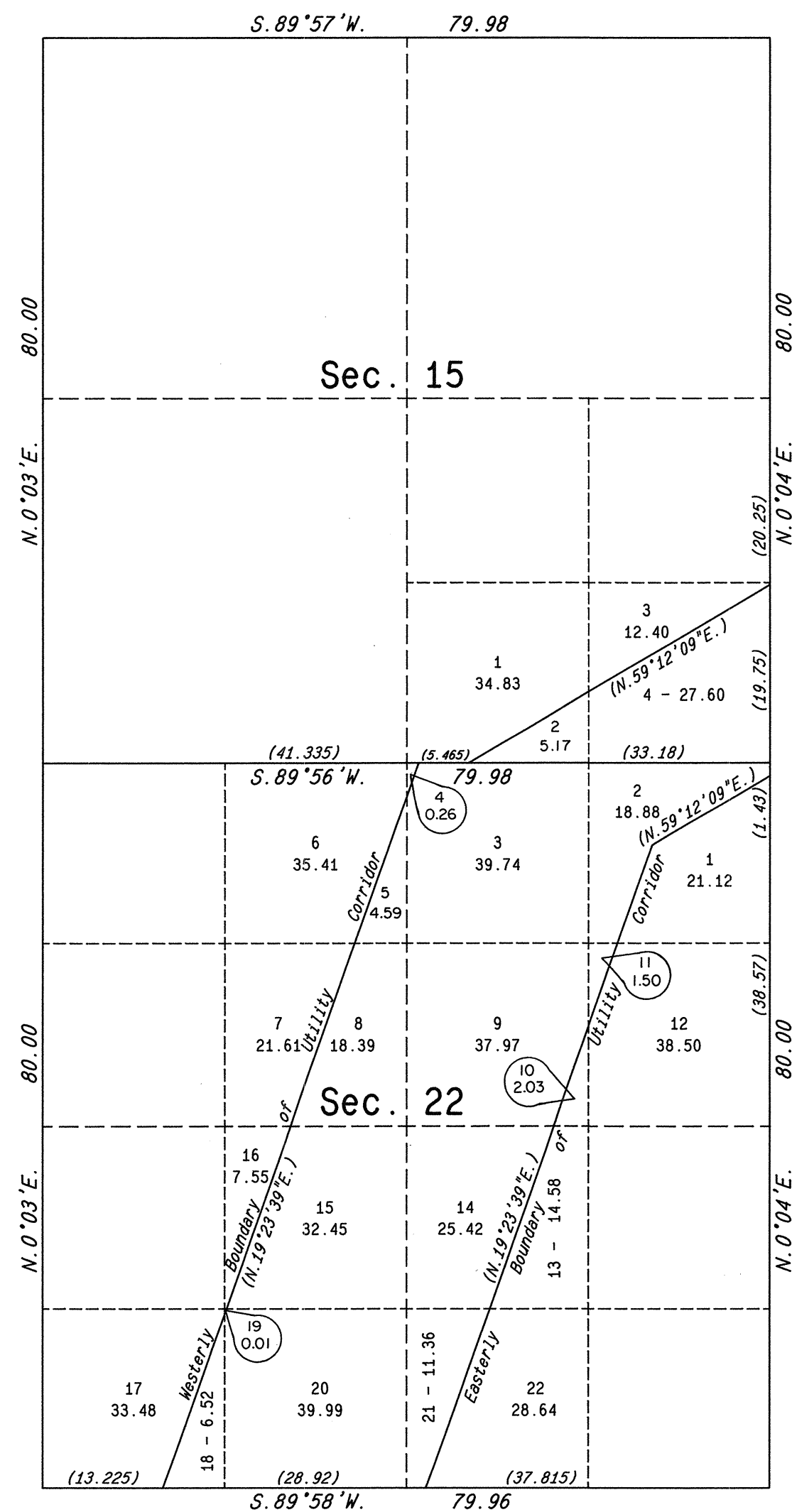
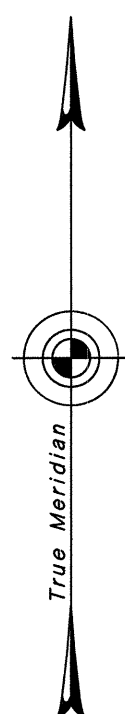


ORIGINAL

TOWNSHIP 18 SOUTH, RANGE 63 EAST, OF THE MOUNT DIABLO MERIDIAN, NEVADA
 SUPPLEMENTAL PLAT OF SECTIONS 15 AND 22



This plat, showing amended lottings in sections 15 and 22, T. 18 S., R. 63 E., Mount Diablo Meridian, Nevada, is based upon the plat approved July 12, 1935, and the right-of-way map dated March 3, 1967 - Case File No. Nev. 067348.

The width of the Utility Corridor is 1800 feet and at a distance of 1750 feet westerly and 50 feet easterly and perpendicular to the center line of the transmission line in section 22. In section 15, the width is 1200 feet and at a distance of 1150 feet westerly and 50 feet easterly of the center line of the transmission line.

UNITED STATES DEPARTMENT OF THE INTERIOR
 BUREAU OF LAND MANAGEMENT
 Reno, Nevada September 11, 1989

This plat, showing amended lottings, is based upon the official records and, having been correctly prepared in accordance with the regulations of this Bureau, is hereby accepted.

For the Director

Lacel E. Bland
 Chief Cadastral Surveyor

