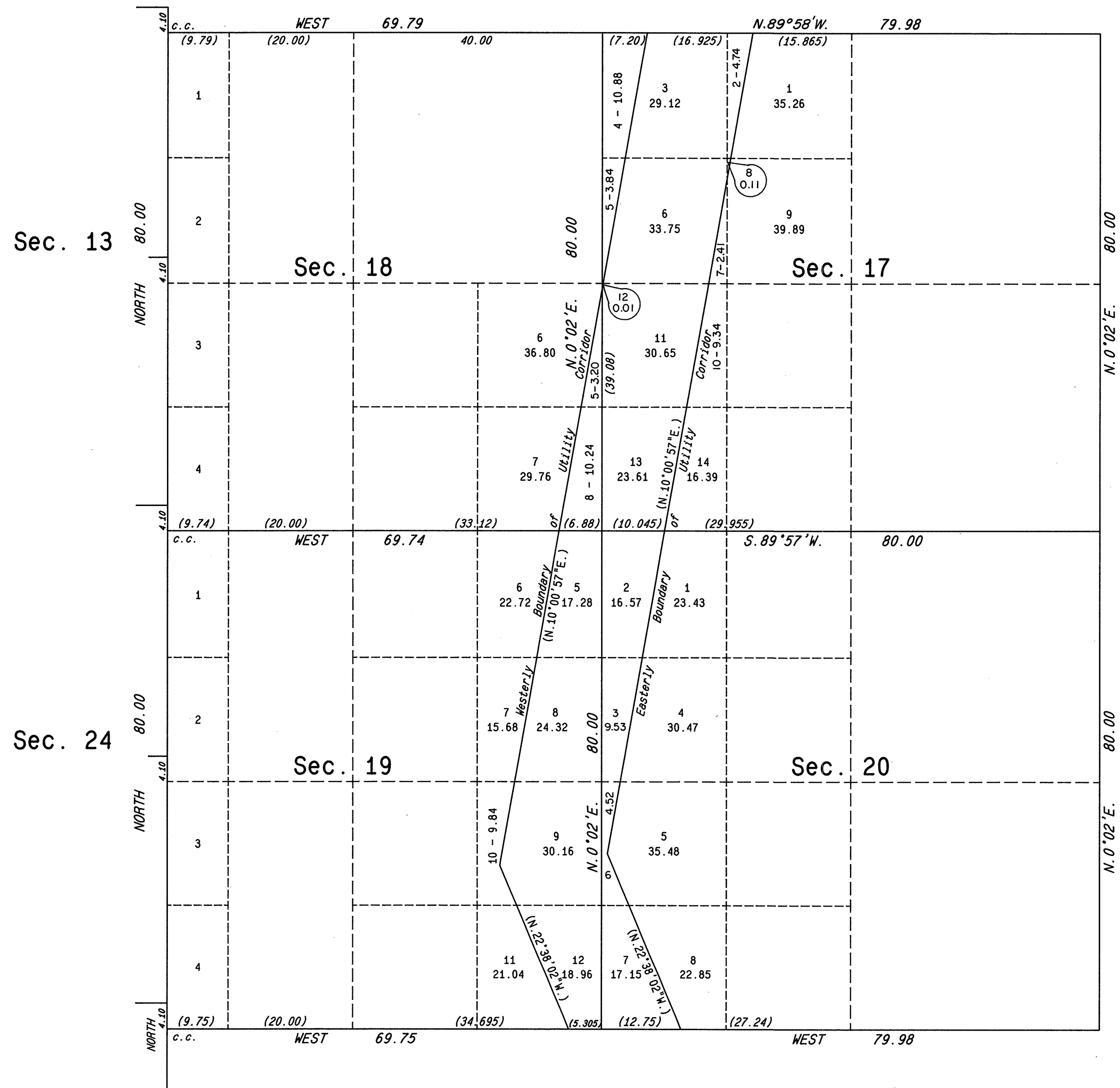
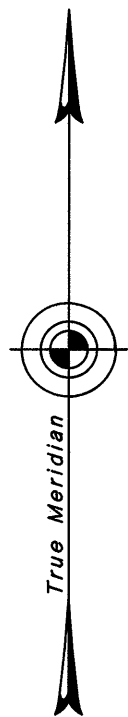


ORIGINAL

TOWNSHIP 18 SOUTH, RANGE 63 EAST, OF THE MOUNT DIABLO MERIDIAN, NEVADA

SUPPLEMENTAL PLAT OF SECTIONS 17, 18, 19 AND 20



This plat, showing amended lottings in sections 17, 18, 19 and 20, T. 18 S., R. 63 E., Mount Diablo Meridian, Nevada, is based upon the plat approved July 12, 1935, and the right-of-way map dated July 24, 1936 - Case File No. CC 020073.

The width of the Utility Corridor is 1100 feet and at a distance of 50 feet westerly and 1050 feet easterly and perpendicular to the center line of the transmission line.

UNITED STATES DEPARTMENT OF THE INTERIOR
BUREAU OF LAND MANAGEMENT
Reno, Nevada September 11, 1989

This plat, showing amended lottings, is based upon the official records and, having been correctly prepared in accordance with the regulations of this Bureau, is hereby accepted.

For the Director
Lavel E. Bland
Chief Cadastral Surveyor

