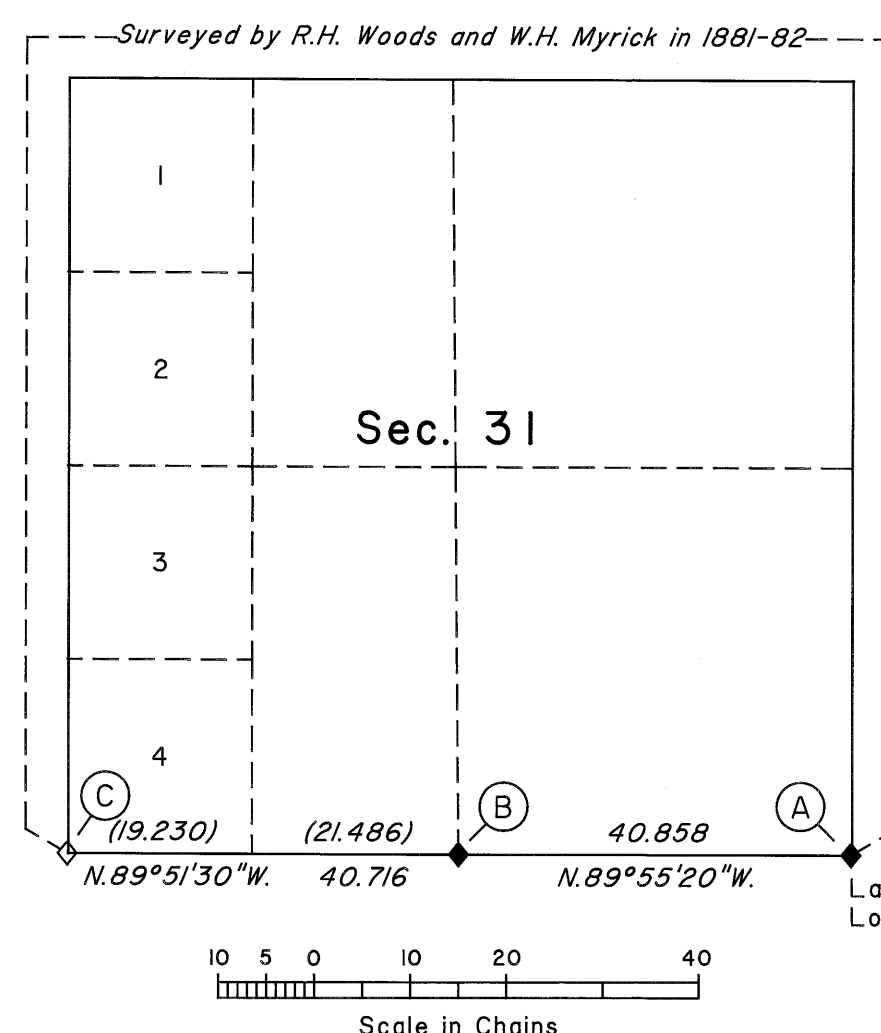


TOWNSHIP 18 SOUTH, RANGE 62 EAST, OF THE MOUNT DIABLO MERIDIAN, NEVADA  
DEPENDENT RESURVEY

## LEGEND

- ◇ Found Corner
- ◆ Found Corner Remonumented
- Ⓐ Corner Description Index

## CORNER DESCRIPTIONS

- Ⓐ The cor. of secs. 5, 6, 31 and 32, on the S. bdy. of T. 18 S., R. 62 E., determined by the U.S. Fish and Wildlife Service as described on sheet 16 of the field notes of the U.S. Fish and Wildlife Service survey dated March 5, 1971, monumented with, an iron pipe, 2 ins. diam., firmly set in a concrete and stone mound, 3 ft. diam., 2 1/2 ft. high, with an aluminum cap, 2 ins. diam., mkd. CNLV PLS 10160 SURVEY MONUMENT. This position was adopted by the City of North Las Vegas in an unrecorded survey as described in City of North Las Vegas Field Book No. 316, Page 54 and is accepted as the best available evidence of the position of the original corner, from which accessories by the City of North Las Vegas

A rebar, 5/8 in. diam., firmly set, projecting 2 ins. above the ground, with an aluminum cap, 2 ins. diam., mkd. North Las Vegas T S R62E RM 71.51 PLS 9399, bears N.26°00'E., 108.3 lks. dist.

A rebar, 5/8 in. diam., firmly set, projecting 2 ins. above the ground, with an aluminum cap, 2 ins. diam., mkd. North Las Vegas T S R62E RM 76.89 PLS 9399, bears S.44°29'E., 116.5 lks. dist.

A rebar, 5/8 in. diam., firmly set flush with ground, with an aluminum cap, 2 ins. diam., mkd. North Las Vegas T S R62E RM 53.67 PLS 9399, bears S.26°00'W., 81.3 lks. dist.

A rebar, 5/8 in. diam., firmly set, projecting 1 in. above the ground, with an aluminum cap, 2 ins. diam., mkd. North Las Vegas T S R62E RM 50.70 PLS 9399, bears N.44°29'W., 76.8 lks. dist.

At the corner point

Set a brass tablet, 3 1/4 ins. diam., 3 1/2-in. stem, cemented firmly in the top of the 2 ins. diam. iron pipe, mkd. as shown.

Deposit aluminum cap in mound, alongside the iron pipe.

- Ⓑ The 1/4 sec. cor. of secs. 6 and 31, determined 1.0 ft. East of a white steel fence post, firmly set, alongside the fence post is a limestone, 16x8x16 ins., clearly mkd. 1/4 on one face and lying loose on the ground surface, as described on sheet 17 of the field notes of the U.S. Fish and Wildlife Service survey dated March 5, 1971.

At the corner point

Set a stainless steel post, 28 ins. long, 2 1/2 ins. diam., 24 ins. in the ground, over a plastic-encased magnet, with brass cap mkd. as shown.

Bury the mkd. stone alongside the stainless steel post.

- Ⓒ The cor. of Tps. 18 and 19 S., Rs. 61 and 62 E., monumented with a stainless steel post, 2 1/2 ins. diam., firmly set, projecting 6 ins. above the ground, with brass cap mkd. as described in the field notes of the dependent resurvey of a portion of the E. bdy. of T. 19 S., R. 61 E., executed under Group No. 697.

This plat represents the entire survey record of the dependent resurvey of a portion of the south boundary of Township 18 South, Range 62 East, Mount Diablo Meridian, Nevada.

The history of previous surveys is as follows:

The exterior boundaries and the subdivisional lines were surveyed by U.S. Deputy Surveyors R.H. Woods and W.H. Myrick in 1881-1882 under Contract No. 111. The east boundary was dependently resurveyed by U.S. Cadastral Engineer C.S. Swanholm in 1930-1933 under Group No. 159. The cor. of Tps. 18 and 19 S., Rs. 61 and 62 E., was remonumented by Cadastral Surveyor R.E. Williams in 1991 under Group No. 697. A portion of the east boundary was dependently resurveyed by Cadastral Surveyor R.A. Zaninovich in 1993-1997 under Group No. 733.

Measurements were made with Trimble R8-2 Global Positioning System (GPS) receivers using the real-time kinematic (RTK) method and refer to the true meridian based on geodetic methods. The mean bearings of the lines and horizontal equivalents of ground distances only are entered in this record.

For those lines not showing bearings and distances, refer to the official records of 1882.

The NAD 83 (CORS 96) geographic position of the cor. of secs. 5, 6, 31 and 32, on the S. bdy. of the Tp., as determined from GPS static observations processed by the National Geodetic Survey, Online Positioning User Service (OPUS), utilizing Continuously Operating Reference Stations (CORS), TROPICANA CORS ARP, CARLTON SQUARE 2 CORS ARP and BERMUDA CORS ARP, in 2009 and carried forward by RTK observations is as follows:

Latitude: 36°20'08.977"N., Longitude: 115°04'48.554"W.

The 1974 mean magnetic declination is 15° E., as shown on U.S.G.S. 7 1/2 minute quadrangle map "VALLEY, NEV.", dated 1974.

Survey executed by Steven E. Dagitz, Cadastral Surveyor, beginning August 17, 2009, and completed November 18, 2009, pursuant to Special Instructions dated July 16, 2009, and Amended Special Instructions dated September 22, 2009, for Group No. 882, Nevada, and Assignment Instructions dated July 21, 2009.

Field Assistant:

Brock R. Clifford, Cadastral Surveyor

UNITED STATES DEPARTMENT OF THE INTERIOR  
BUREAU OF LAND MANAGEMENT

Reno, Nevada January 21, 2011

The survey represented by this plat, having been correctly executed in accordance with the requirements of law and the regulations of this Bureau, is here by accepted.

For the Director

*David D. Morlan*

Chief Cadastral Surveyor, Nevada

I, Steven E. Dagitz, Cadastral Surveyor, HEREBY CERTIFY upon honor that, in pursuance of Special Instructions bearing date of the 16th day of July, 2009, and Amended Special Instructions bearing date of the 22nd day of September, 2009, I have dependently resurveyed a portion of the south boundary of Township 18 South, Range 62 East, of the Mount Diablo Meridian, in the State of Nevada; and that said survey has been made in strict conformity with said special instructions, the Manual of Instructions for the Survey of the Public Lands of the United States, and in the specific manner described on this plat.

1/21/2011  
Date

*David D. Morlan* / For Steven E. Dagitz  
Cadastral Surveyor