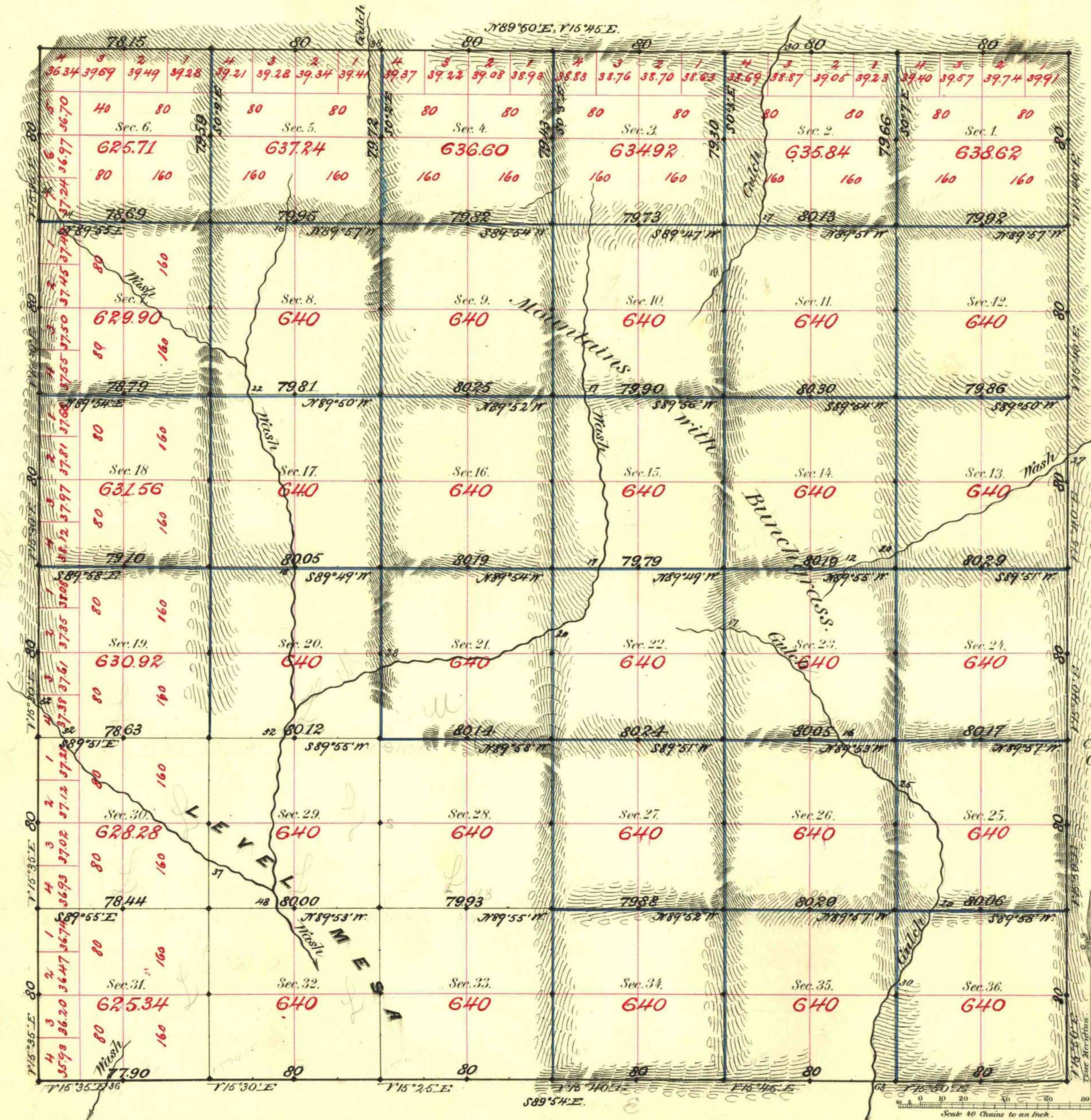


TOWNSHIP N^o 18 SOUTH RANGE N^o 62 EAST MOUNT DIABLO MERIDIAN



Aggregate Area of Public Land surveyed 22954.83 acres.

Commenced February 22nd 1882.
Completed 28th -

Subdivisions run with a variation of 15^o45' East.

Surveys Designated	By Whom Surveyed	Date of Contract	Amount of Surveys	When Surveyed	N ^o Cor.
Township lines	Woods & Myrick	Jan. 28 th 1881	23-76 ^{ch} -05 ^{lk}	1882	111
Subdiv ^{ns} black	-	-	8-77-12	February	"
blue	-	-	50-75-29	-	"

The above Map of Township N. 18 South of Range N. 62 East of Mt. Diablo Meridian is strictly conformable to the field notes of the survey thereof on file in this Office, which have been examined and approved.

Surveyor General's Office,
Reno, Nevada
April 28th 1882.

C. J. Parry
Sur. Gen. Nevada