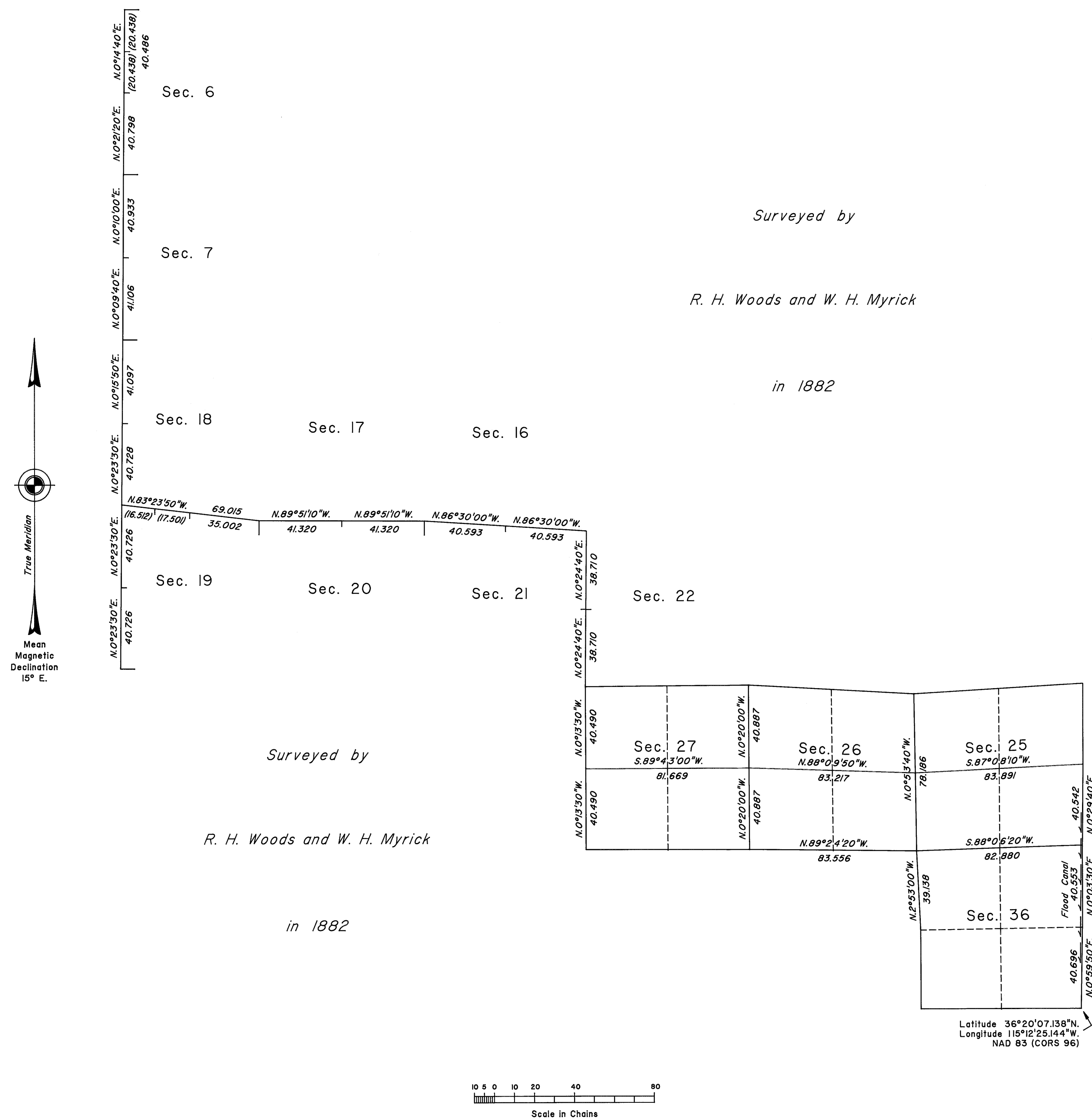


TOWNSHIP 18 SOUTH, RANGE 60 EAST, OF THE MOUNT DIABLO MERIDIAN, NEVADA

DEPENDENT RESURVEY AND SUBDIVISION



A history of surveys is contained in the field notes.

A dependent resurvey of a portion of the west boundary was executed concurrently under T. 18 S., R. 59 E., of this same group.

This plat represents the dependent resurvey of a portion of the east boundary and a portion of the subdivisional lines designed to restore the corners in their true original locations according to the best available evidence, and the subdivision of sections 25, 26 and 27, Township 18 South, Range 60 East, Mount Diablo Meridian, Nevada.

The lottings and areas are as shown on the plat approved April 8, 1882.

For those surveyed lines not showing bearings and distances, refer to the official records of 1882.

Survey executed by Steven E. Dagitz and Brock R. Clifford, Cadastral Surveyors, beginning July 21, 2009, and completed February 12, 2010, pursuant to Special Instructions dated July 16, 2009, for Group No. 881, Nevada.

UNITED STATES DEPARTMENT OF THE INTERIOR
BUREAU OF LAND MANAGEMENT

Reno, Nevada January 21, 2011

This plat is strictly conformable to the approved field notes, and the survey, having been correctly executed in accordance with the requirements of law and the regulations of this Bureau, is hereby accepted.

For the Director

David D. Moran

Chief Cadastral Surveyor, Nevada