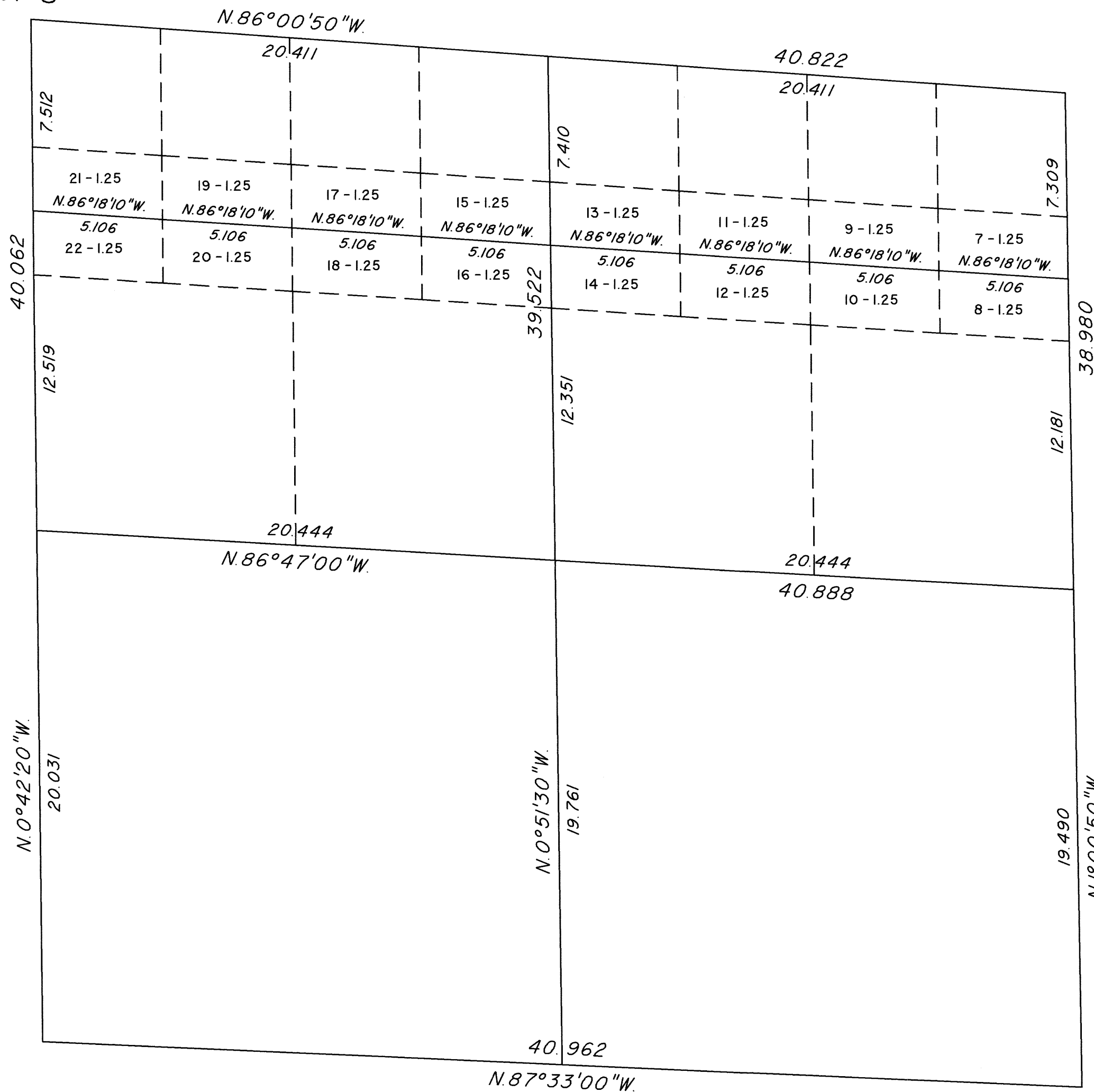


TOWNSHIP 18 SOUTH, RANGE 59 EAST, OF THE MOUNT DIABLO MERIDIAN, NEVADA

ENLARGED DIAGRAM OF THE SE 1/4 OF SECTION 8

OFFICIALLY FILED
NEVADA STATE OFFICE
at 10:00 AM on OCT 27 2020

Sec. 8



Reference should be made to Sheet No. 1 for survey information.

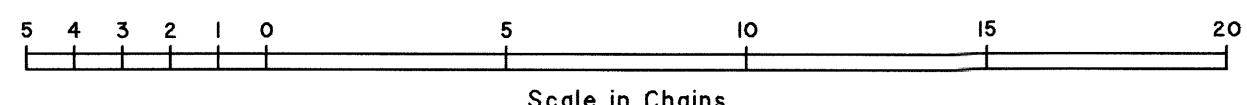
UNITED STATES DEPARTMENT OF THE INTERIOR
BUREAU OF LAND MANAGEMENT

Reno, Nevada August 10, 2020

This plat is strictly conformable to the approved field notes, and the survey, having been correctly executed in accordance with the requirements of law and the regulations of this Bureau, is hereby accepted.

For the Director

Michael C. Humming
Chief Cadastral Surveyor for Nevada



CWM