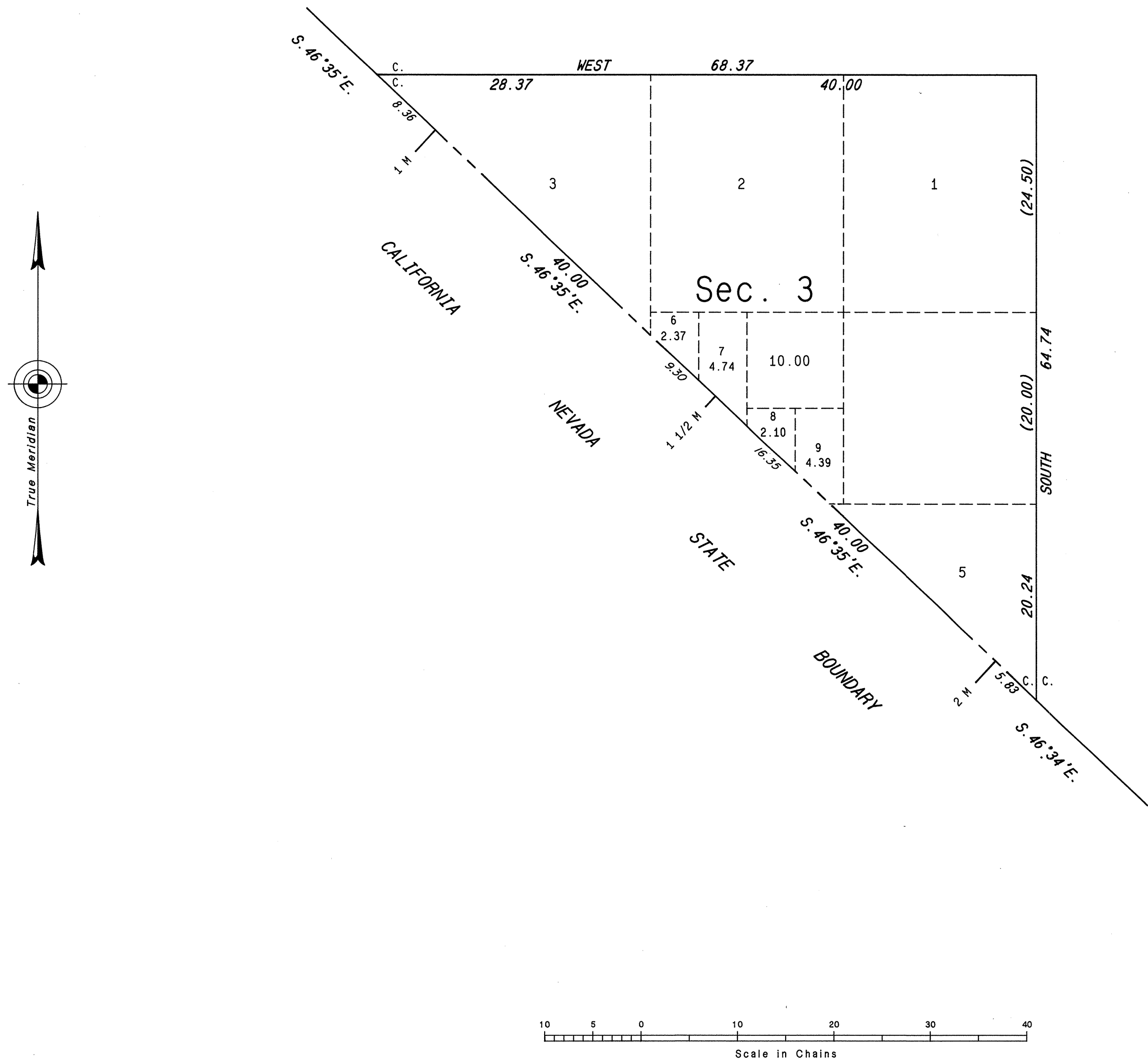


ORIGINAL

TOWNSHIP 18 SOUTH, RANGE 49 EAST, OF THE MOUNT DIABLO MERIDIAN, NEVADA
SUPPLEMENTAL PLAT OF SECTION 3



This plat, showing a subdivision of original lot 4 of sec. 3, T. 18 S., R. 49 E., Mount Diablo Meridian, Nevada, is based upon the plat approved May 13, 1935 and accepted June 10, 1935.

UNITED STATES DEPARTMENT OF THE INTERIOR
BUREAU OF LAND MANAGEMENT

Reno, Nevada June 4, 1986

This plat, showing amended lottings, is based upon the official records and, having been correctly prepared in accordance with the regulations of this Bureau, is hereby accepted.

For the Director

Lacel E. Bland

Chief Cadastral Surveyor