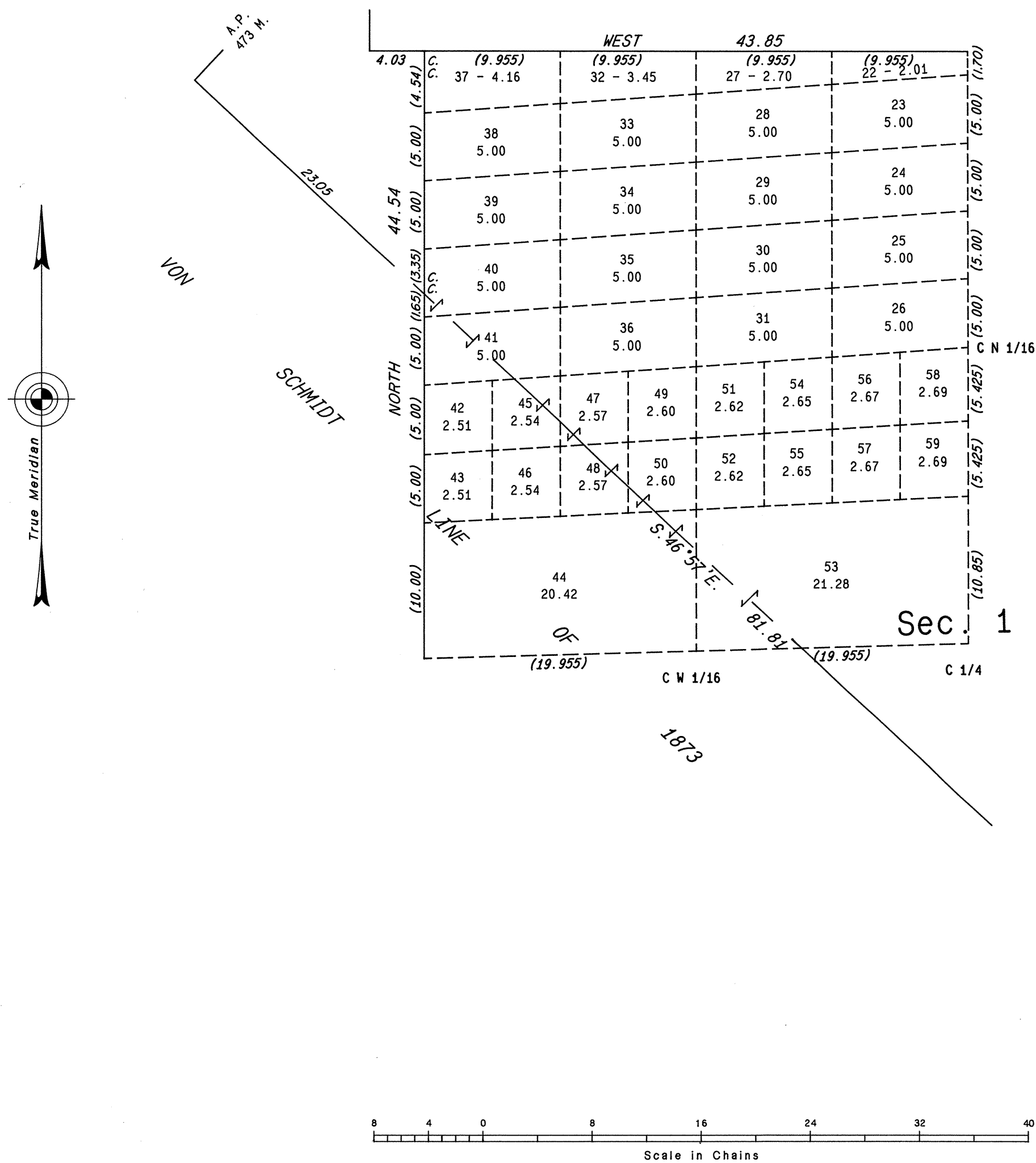


ORIGINAL

TOWNSHIP 18 SOUTH, RANGE 49 EAST, OF THE MOUNT DIABLO MERIDIAN, NEVADA
SUPPLEMENTAL PLAT OF THE NW1/4 OF SECTION 1



This plat, showing a subdivision of original lots 10, 11, 12 and 13 of sec. 1, T. 18 S., R. 49 E., Mount Diablo Meridian, Nevada, is based upon the plat approved May 4, 1882 and the plat approved May 13, 1935 and accepted June 10, 1935.

UNITED STATES DEPARTMENT OF THE INTERIOR
BUREAU OF LAND MANAGEMENT

Reno, Nevada June 4, 1986

This plat, showing amended lottings, is based upon the official records and, having been correctly prepared in accordance with the regulations of this Bureau, is hereby accepted.

For the Director

Lacel E. Bland
Chief Cadastral Surveyor

T. 18 S., R. 49 E., M.D.M.