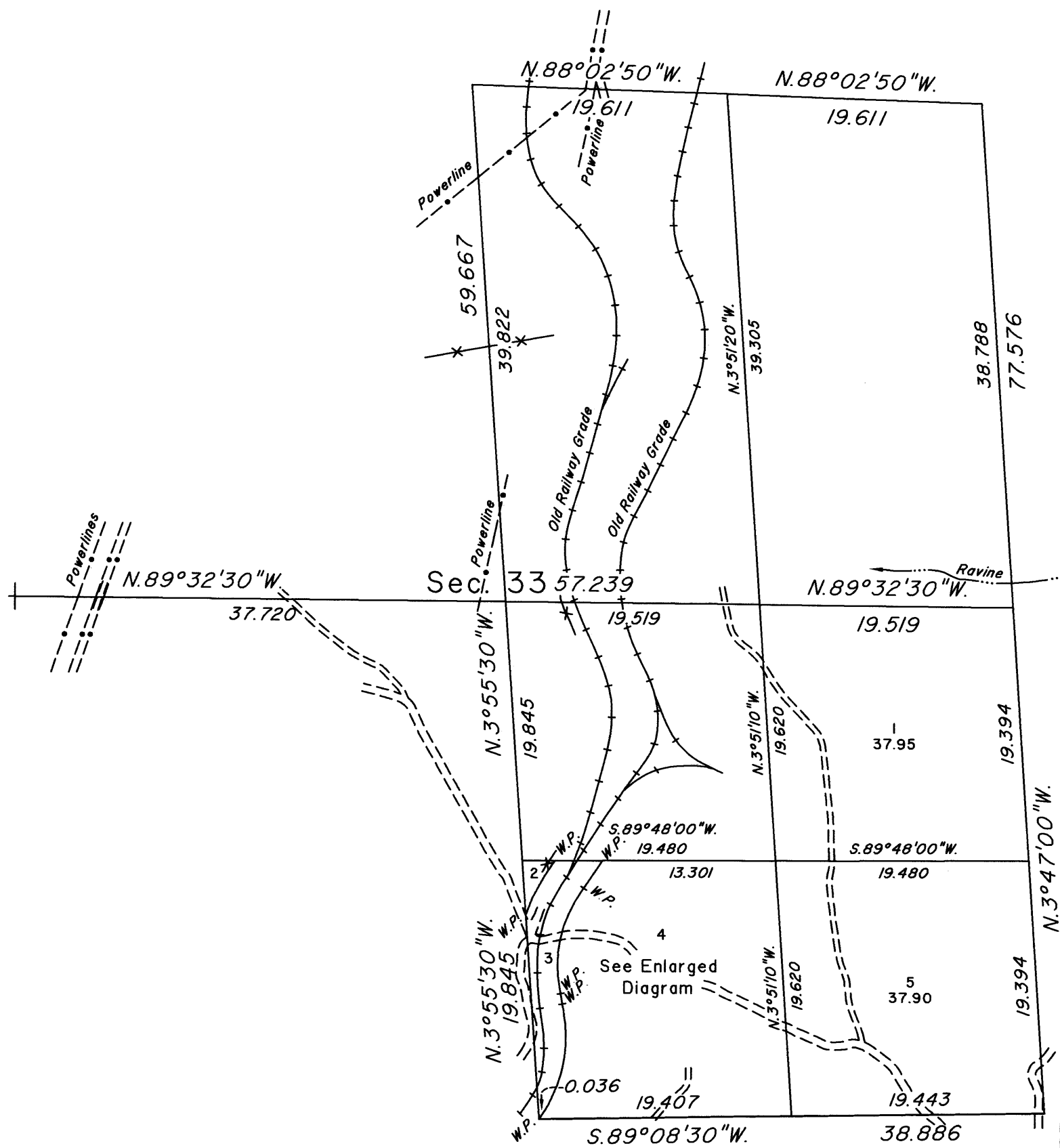
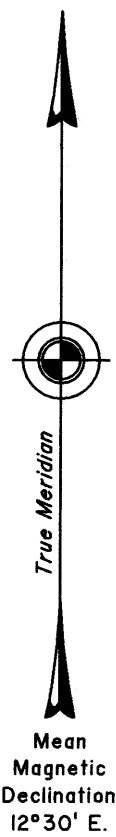


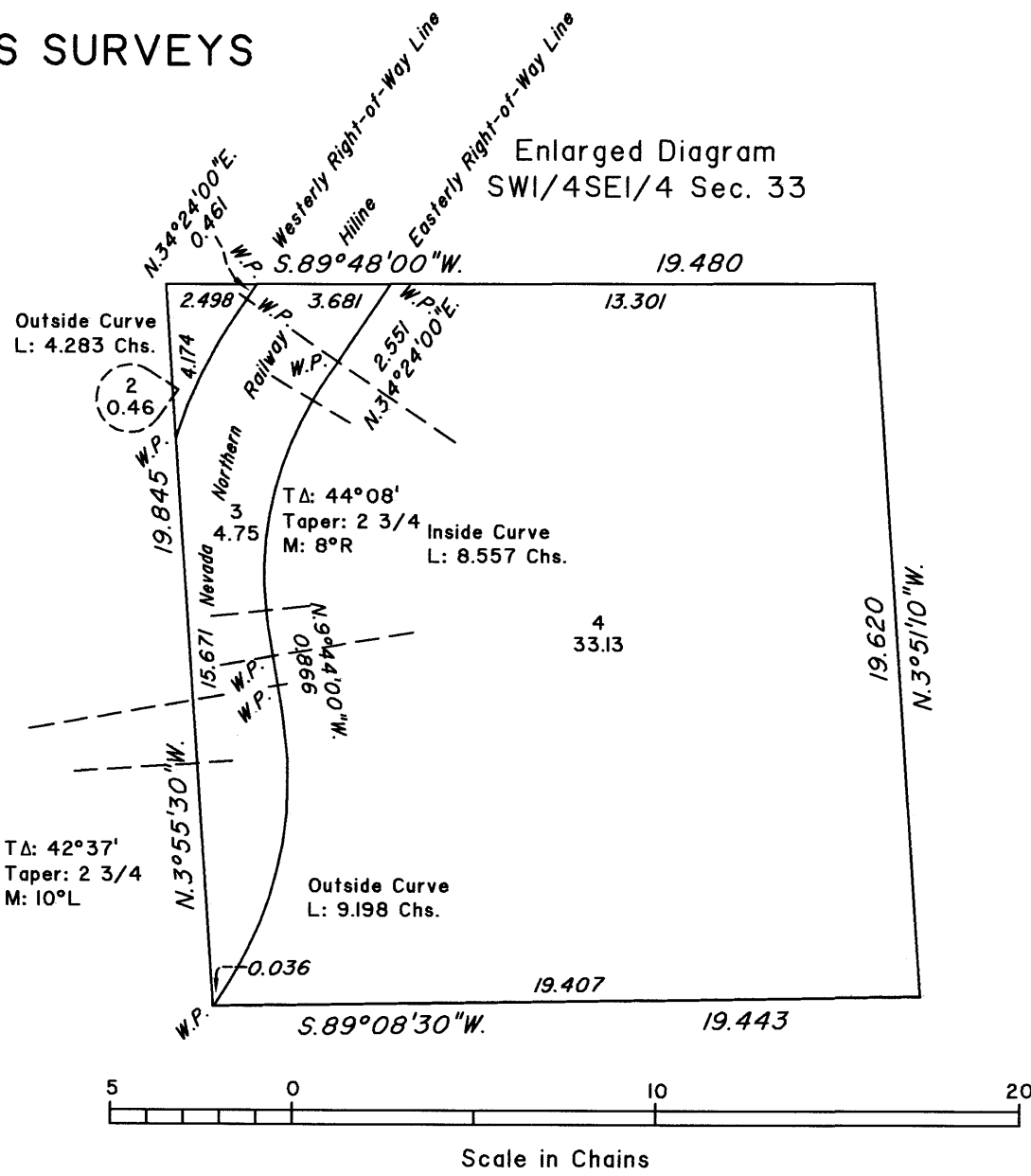
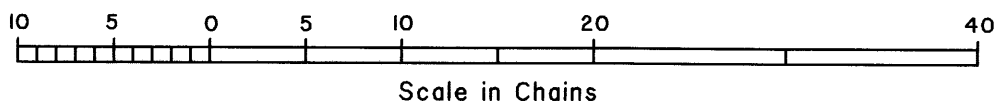
OFFICIALLY FILED
NEVADA STATE OFFICE
at 10:00 AM on
APR 12 2018

TOWNSHIP 18 NORTH, RANGE 64 EAST, OF THE MOUNT DIABLO MERIDIAN, NEVADA

DEPENDENT RESURVEY, SUBDIVISION AND METES-AND-BOUNDS SURVEYS



Latitude 39°22'35.819\"/>



A history of surveys is contained in the field notes.

This plat represents the dependent resurvey of a portion of the south boundary and a portion of the subdivisional lines designed to restore the corners in their true original locations according to the best available evidence, the subdivision of section 33 and metes-and-bounds surveys of the easterly and westerly right-of-way lines of the Nevada Northern Railway Hiline through a portion of section 33, Township 18 North, Range 64 East, Mount Diablo Meridian, Nevada.

Except as indicated hereon, the lottings and areas are as shown on the plat approved June 15, 1872.

Survey executed by Brandon K. Grace and Lance A. Barney, Cadastral Surveyors, and Clay W. Morrow, Surveying Technician, beginning June 17, 2007 and completed January 17, 2018, pursuant to Special Instructions dated June 14, 2007, for Group No. 854, Nevada.

UNITED STATES DEPARTMENT OF THE INTERIOR
BUREAU OF LAND MANAGEMENT

Reno, Nevada April 9, 2018

This plat is strictly conformable to the approved field notes, and the survey, having been correctly executed in accordance with the requirements of law and the regulations of this Bureau, is hereby accepted.

For the Director

Mahmud o. Hammami

Chief Cadastral Surveyor for Nevada

T.18N., R.64E., M.D.M.