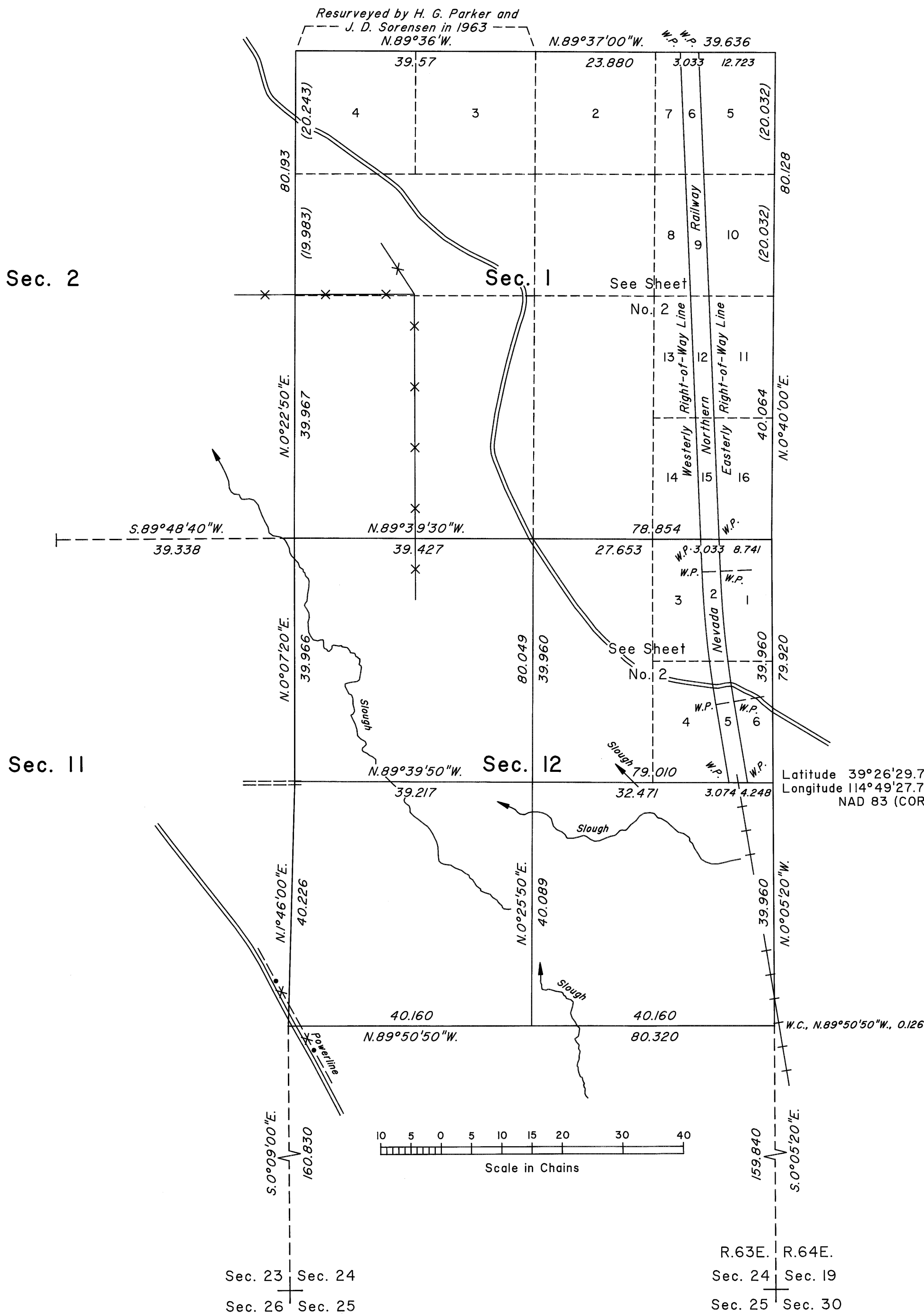
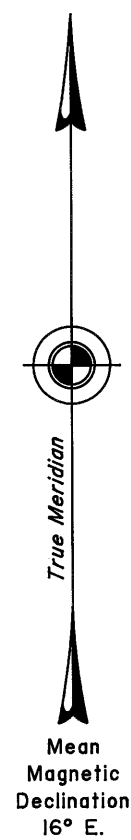


TOWNSHIP 18 NORTH, RANGE 63 EAST, OF THE MOUNT DIABLO MERIDIAN, NEVADA  
DEPENDENT RESURVEY, SUBDIVISION AND METES-AND-BOUNDS SURVEY



A history of surveys is contained in the field notes.

A dependent resurvey of a portion of the north boundary was executed concurrently under T. 19 N., R. 63 E., of this same group.

This plat, in two sheets, represents the dependent resurvey of a portion of the east boundary and a portion of the subdivisional lines designed to restore the corners in their true original locations according to the best available evidence, the subdivision of section 12 and metes-and-bounds surveys of the easterly and westerly right-of-way lines of the Nevada Northern Railway through section 1 and a portion of section 12, Township 18 North, Range 63 East, Mount Diablo Meridian, Nevada.

Except as indicated hereon, the lottings and areas are as shown on the plat approved June 15, 1872.

Survey executed by Douglas A. Potts, Cadastral Surveyor, and Clay W. Morrow, Surveying Technician, beginning July 13, 2006, and completed October 19, 2009, pursuant to Special Instructions dated July 11, 2006, for Group No. 840, Nevada.

UNITED STATES DEPARTMENT OF THE INTERIOR  
BUREAU OF LAND MANAGEMENT

Reno, Nevada February 2, 2010

This plat is strictly conformable to the approved field notes, and the survey, having been correctly executed in accordance with the requirements of law and the regulations of this Bureau, is hereby accepted.

For the Director

Chief Cadastral Surveyor, Nevada

T.18N., R.63E., M.D.M.