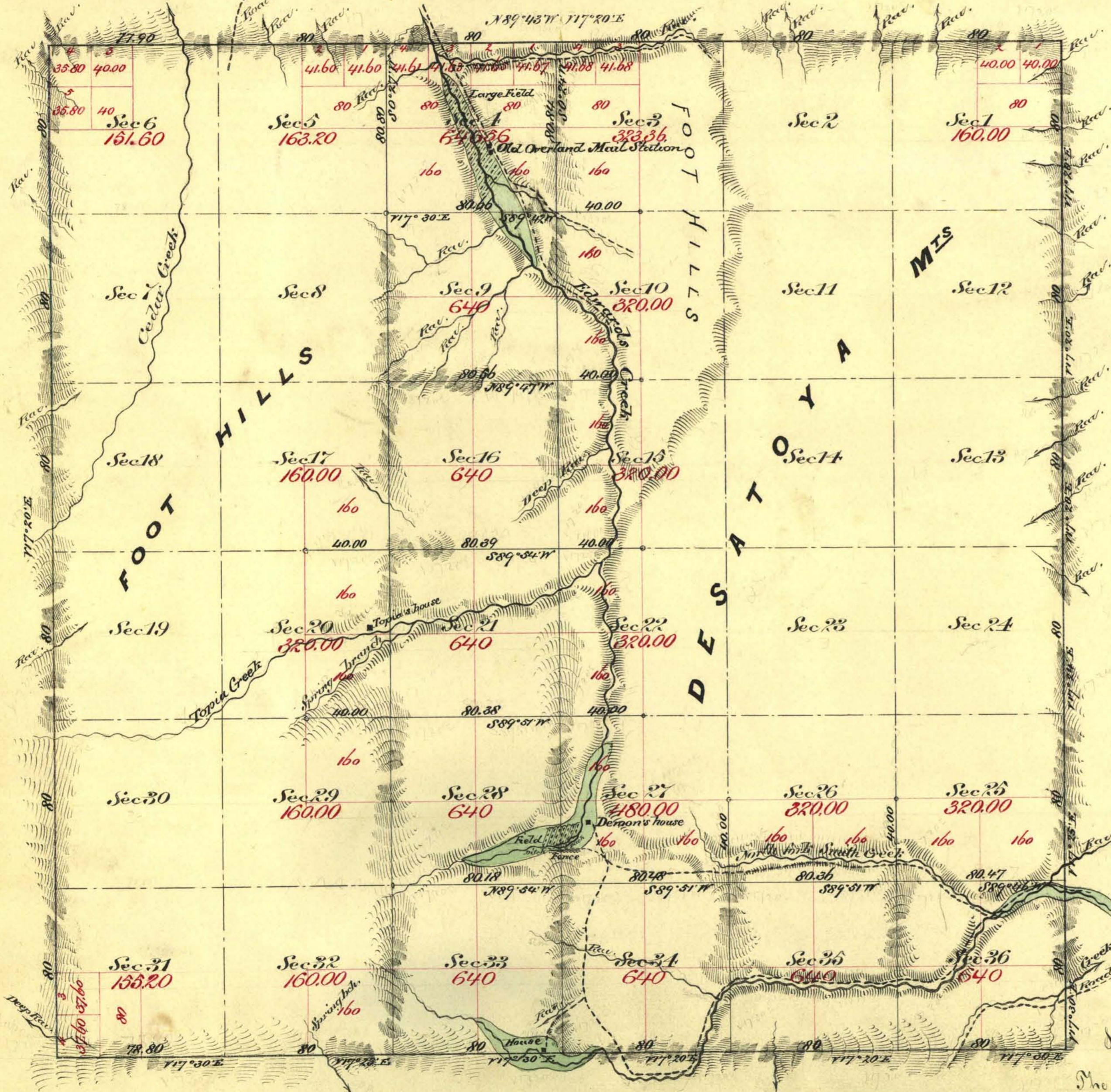


Township N<sup>o</sup> 18 North

Range N<sup>o</sup> 38 East

Mount Diablo Meridian



Aggregate Area of Public Land Surveyed  
 Estimated " " Mountains Unsurveyed  
 Aggregate

9599.92 Ac
13,390.56 "
<u>22,990.48 "</u>

Commenced August 27<sup>th</sup> 1879  
 Completed " 30<sup>th</sup> "

Subdivisions not otherwise noted run with a Variation of 17' 20" East  
 The above plat of Township N<sup>o</sup> 18 North of Range N<sup>o</sup> 38 East Mount Diablo Meridian is strictly conformable to the field notes of the survey thereof on file in this office  
 U. S. Surv. Genl. New  
 Virginia City Nevada  
 Sept. 27<sup>th</sup> 1879

Survey designated	By whom Surveyed	Date of Contract	Am't. of Survey	When Surveyed
Township lines	Barker & McVellan	July 15 <sup>th</sup> 1879	23 - 76 - 70	1879
Subdivisions	"	"	26 - 05 - 12	August "

*E. S. Davis*  
 U. S. Surv. Genl. New  
 V D