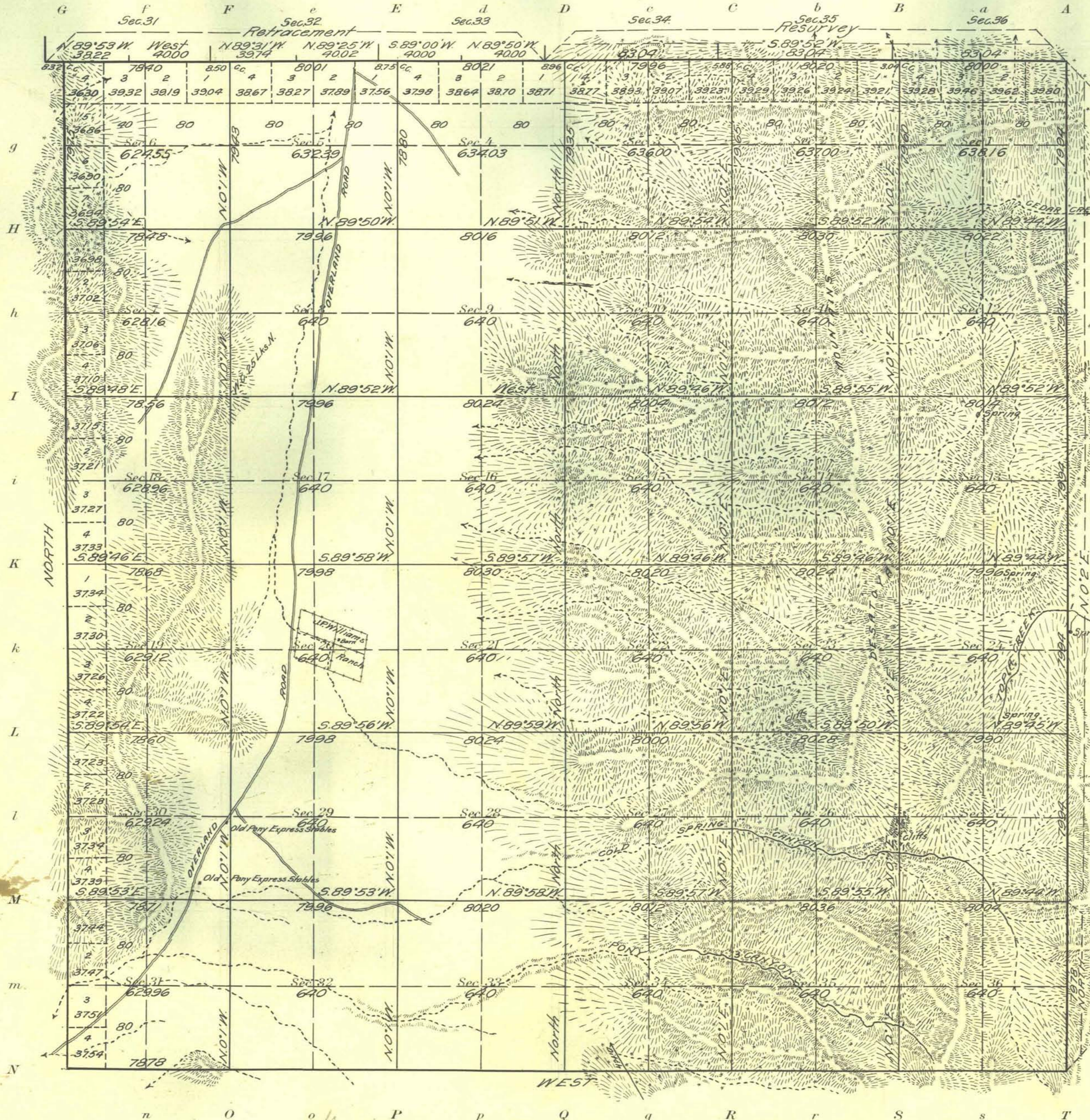


Township N° 18 North Range N° 37 East M^t Diablo Meridian, Nevada



NOTE
Deputy report indications of gold and silver ore in the northern portion of the Desotoya Mountains

| Areas in Acres | |
|--------------------|-----------------|
| Public Land | 22947.57 |
| Indian Reservation | |
| Indian Allotments | |
| Mineral Claims | |
| Water Surface | |
| Total Area | 22947.57 |

Scale 40 Chains to an inch
Mean Magnetic Declination 17°45' E.
Latitude 39°22' N.
Longitude 117°46' W.

| Surveys Designated | By Whom Surveyed | Contract | | | Amount of Surveys | | When Surveyed | |
|--------------------|------------------|----------|---------------|----|-------------------|------|----------------|----------------|
| | | No. | Date | | Mls. | chs. | fts. | Began |
| North Bdy. Retr. | H.W. Reppert | 22 | Feb. 11, 1913 | 2 | 77 | 98 | Aug. 16, 1913 | Aug. 19, 1913 |
| North Bdy. Resur. | " | " | " | 3 | 09 | 12 | Sept. 18, 1913 | Sept. 18, 1913 |
| East Bdy. Resur. | " | " | " | 5 | 79 | 48 | Sept. 3, 1913 | Sept. 18, 1913 |
| Sand W. Boundary | " | " | " | 11 | 78 | 53 | Aug. 27, 1913 | Sept. 1, 1913 |
| Subdivision | " | " | " | 59 | 72 | 88 | Sept. 3, 1913 | Sept. 27, 1913 |

The above map of Township No. 18 North Range No. 37 East of the M^t Diablo Meridian Nevada is strictly conformable to the field notes of the survey thereof on file in this office, which have been examined and approved

U. S. Surveyor General's Office.
Reno, Nevada, January 15, 1915
John B. Sullivan
Surveyor General.