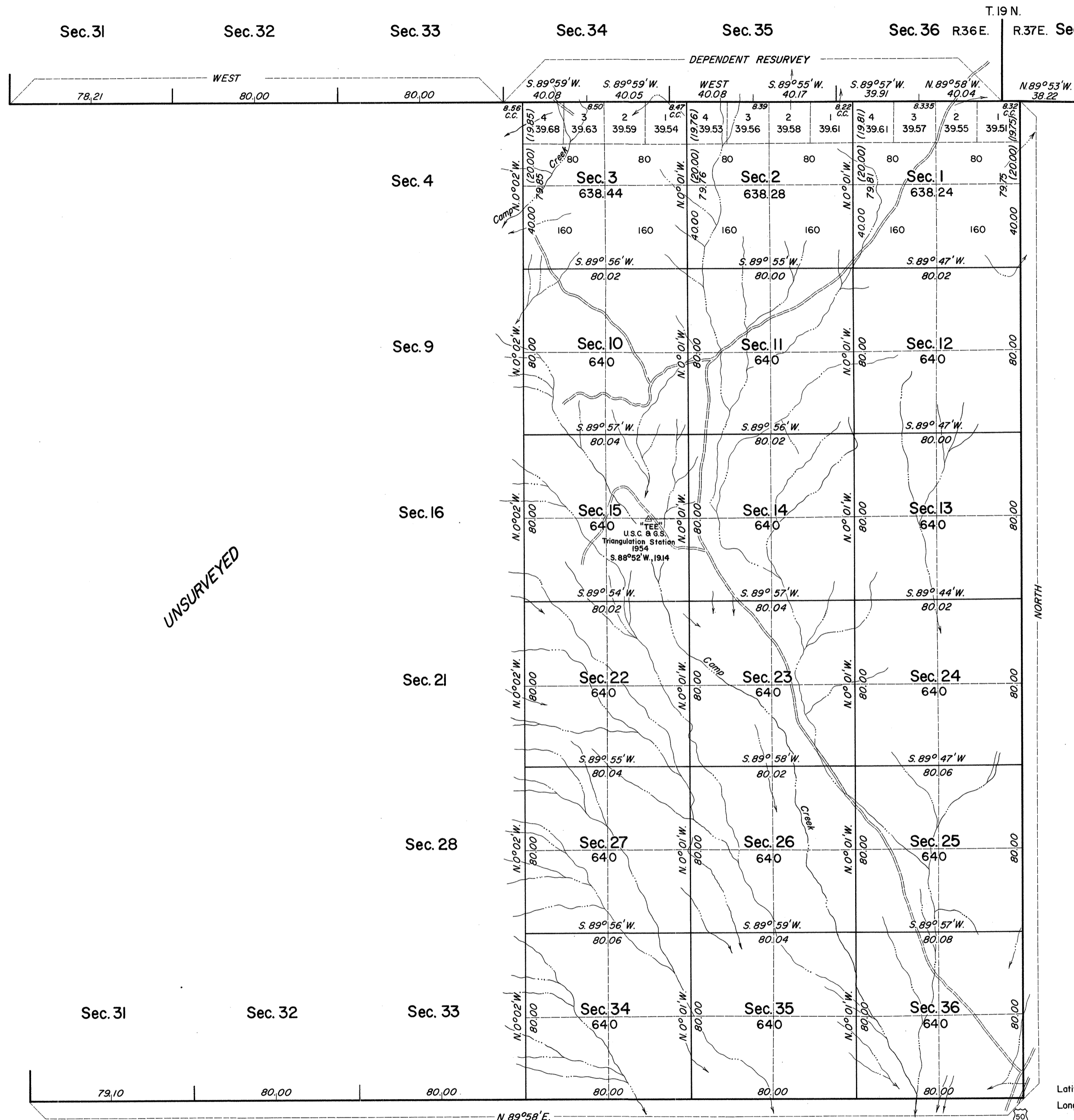


# TOWNSHIP 18 NORTH, RANGE 36 EAST, OF THE MOUNT DIABLO MERIDIAN, NEVADA

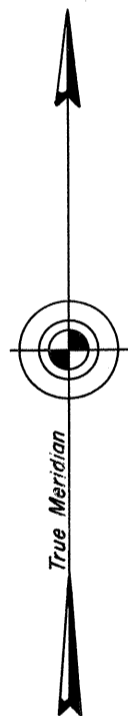
OFFICIALLY FILED  
NEVADA LAND OFFICE  
10:00 AM May 24, 1968



History of the earlier surveys is contained in the field notes.

This plat represents the dependent resurvey of a portion of the south boundary of T. 19 N., R. 36 E., designed to restore the corners in their true original positions according to the best available evidence, and, the survey of a portion of the subdivisional lines of T. 18 N., R. 36 E.

Survey executed by John D. Sorensen, Cadastral Surveyor, April 19 to May 6, 1966, under Special Instructions dated April 13, 1966, for Group No. 437, Nevada.



Mean Magnetic Declination  
17 1/4° East

UNSURVEYED

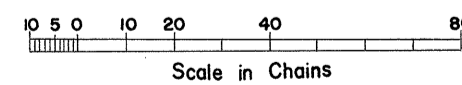
UNITED STATES DEPARTMENT OF THE INTERIOR  
BUREAU OF LAND MANAGEMENT  
Washington, D. C. March 14, 1968

This plat is strictly conformable to the approved field notes, and the survey, having been correctly executed in accordance with the requirements of law and the regulations of this Bureau, is hereby accepted.

For the Director  
*R. E. Brown*

Chief, Division of Engineering

Latitude 39°22' 28.8" N.  
Longitude 117°52' 05.4" W.



Area Surveyed 11,514.96 Acres