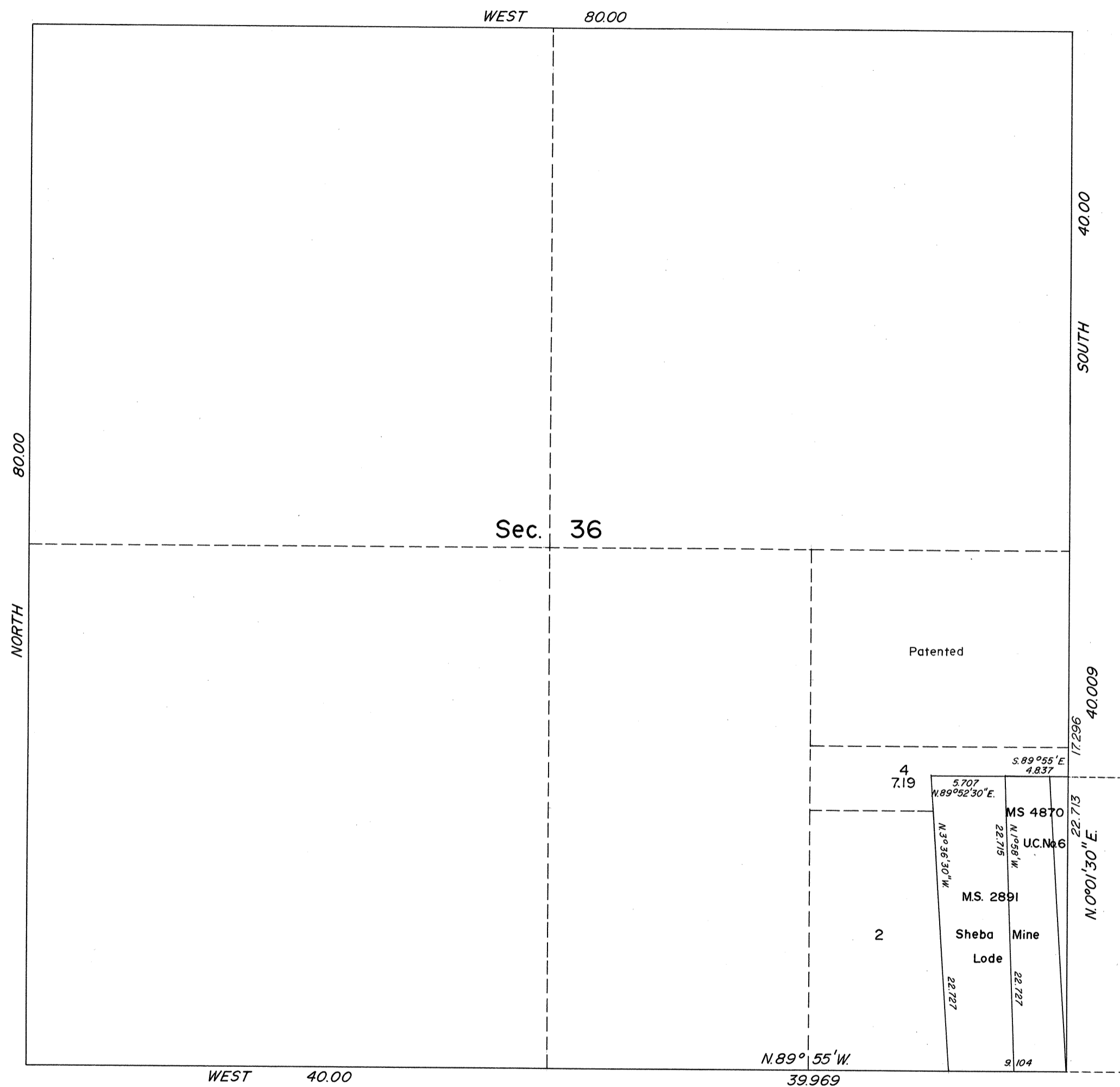
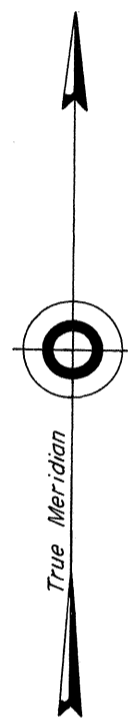


TOWNSHIP 18 NORTH, RANGE 22 EAST, OF THE MOUNT DIABLO MERIDIAN, NEVADA
SUPPLEMENTAL PLAT OF SECTION 36



This plat showing amended lottings created by the segregation of U. C. No. 6 Lode, of Mineral Survey No. 4870 in section 36, T. 18 N., R. 22 E., Mount Diablo Meridian, Nevada, is based on plat approved June 26, 1912, the plat accepted November 5, 1957, and the approved mineral survey records.

OFFICIALLY FILED
NEVADA LAND OFFICE

10:00 AM 1/19/1965

UNITED STATES DEPARTMENT OF THE INTERIOR
BUREAU OF LAND MANAGEMENT
Washington, D. C. December 14, 1964

This plat, showing amended lottings, is based upon the official records, and having been correctly prepared in accordance with the regulations, is hereby accepted.

For the Director

Chief, Division of Engineering

