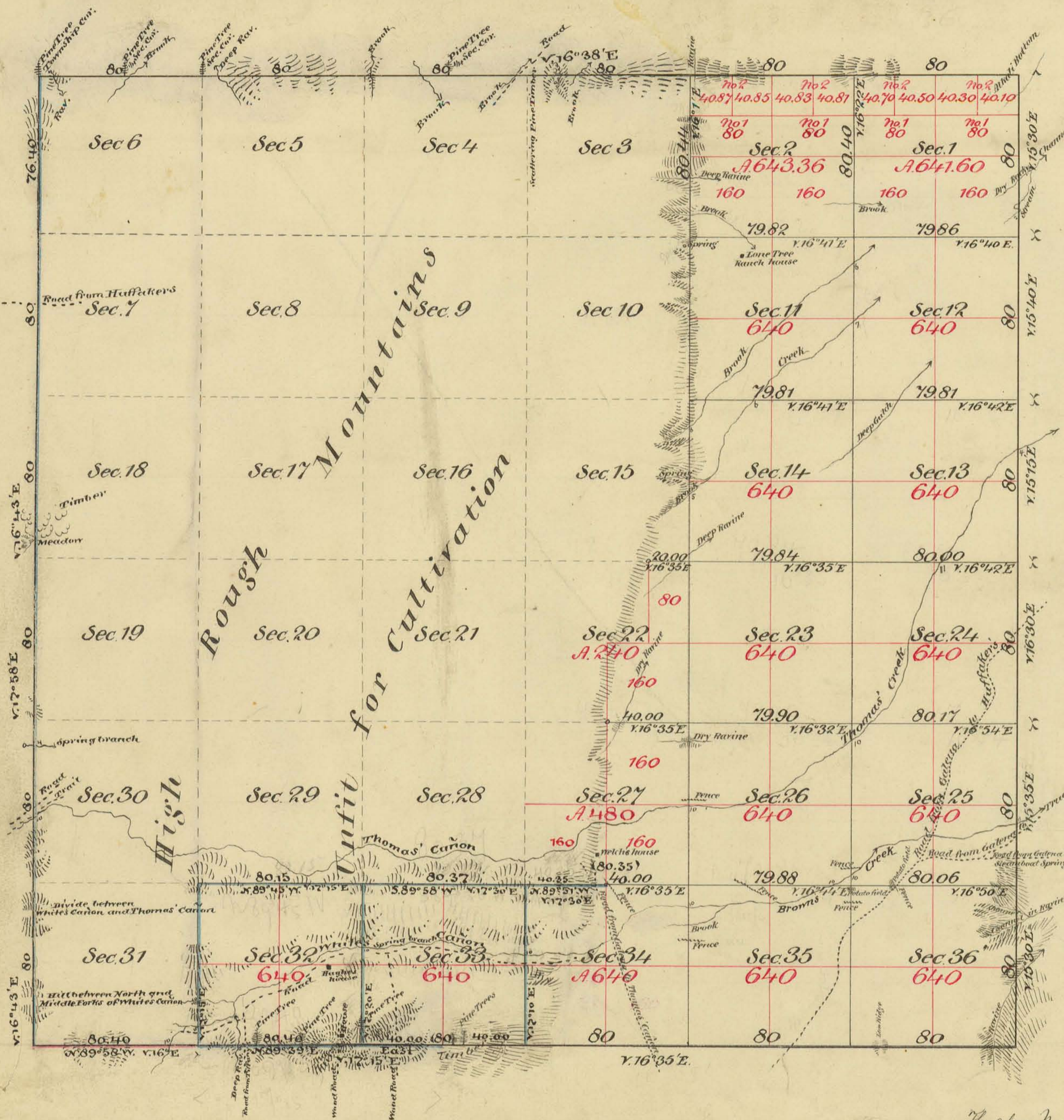


Township N<sup>o</sup> 18 North Range N<sup>o</sup> 19 East Mount Diablo Meridian.



Aggregate Area of Public Land	8684.96 Acres
Estimated " Unsurveyed Mountain Land	14374.08 "
Aggregate	23059.04 "
Aggregate Area of Public Land	10324.96 Acres
Estimated " Unsurveyed Mountain Land	12627.12 "
Aggregate	22952.08 "

Meridian lines not otherwise noted, run with a Variation of 16° 10' E.

Surveys Designated	By whom surveyed	Date of Contract	Amount of Surveys	When surveyed
East boundary of Township not colored	J.S. Lawson	September 14 <sup>th</sup> 1861	6 miles 00 cts 00 ths	1861
West of Township lines	E.H. Dyer	October 6 <sup>th</sup> 1862	9 " 65 " 70 "	1863
Section lines not colored	" "	" "	23 " 27 " 19 "	July 23 <sup>rd</sup> 1863
West boundary of Township	J.W. Fawcett	June 22 <sup>th</sup> 1865 and Special Inst. May 13 <sup>th</sup> 1865		1865
South boundary colored red	P.C. Rector	April 20 <sup>th</sup> 1865		1865
" " blue	Richard A. Chase	April 9 <sup>th</sup> 1866	1 " 40 " 40 "	1866
Section lines colored blue	" "	" "	5 " 40 " 35 "	April 27 <sup>th</sup> 1866

The above Map of Township No. 18 North Range No. 19 East, Mount Diablo Meridian is strictly conformable to the field notes of the surveys thereof on file in this office, which have been examined and approved by the Surveyor General's Office San Francisco, California October 8<sup>th</sup> 1863

*E. F. Blair*  
Surv. Gen. Cal.

The above Map of Township No. 18 North Range No. 19 East, Mount Diablo Meridian, as amended, is strictly conformable to the field notes of the surveys thereof, on file in this office, which have been examined and approved by the Surveyor General's Office San Francisco, California August 24<sup>th</sup> 1866

*L. Upson*  
Surv. Gen. Cal. and Nevada