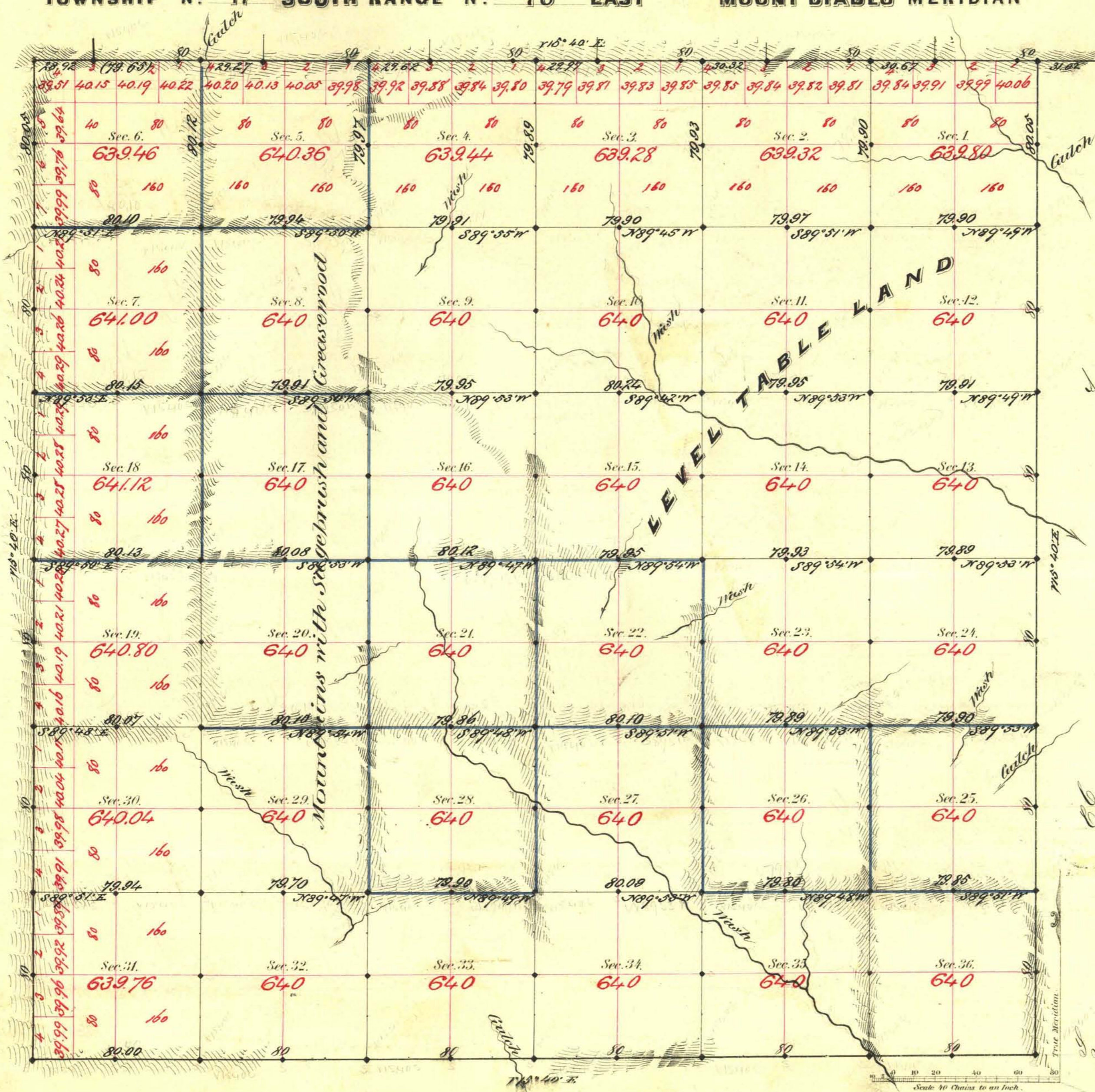


TOWNSHIP N^o 17 SOUTH RANGE N^o 70 EAST MOUNT DIABLO MERIDIAN



Aggregate Area of Public Land Surveyed 23,040.32 Ac.

Commenced March 1st 1881
Completed " 12th "

Sub divisions run with a Variation of 15° 40' E.

| Surveys Designated | By Whom Surveyed | Date of Contract | Amount of Surveys | When Surveyed |
|---------------------|------------------|-------------------------------|-------------------|---------------|
| Township lines | W. J. Wood | January 22 nd 1851 | 36-72-72 | 1851 |
| Subdivisions blocks | " | " | 31-79-97 | " |
| " line 10 | " | " | 27-79-87 | " |
| Conveyance | " | " | 1-19-88 | " |

11th Cor.
109
" "
" "

The above Map of Township N^o 17 South of Range N^o 70 East Mt. Diablo Meridian is strictly conformable to the field notes of the survey thereof on file in this Office, which have been examined and approved.
Surveyor General's Office. }
Virginia City Nev. }
May 28th 1881 }
C. S. Davis }
Sur. Gen. Nev.