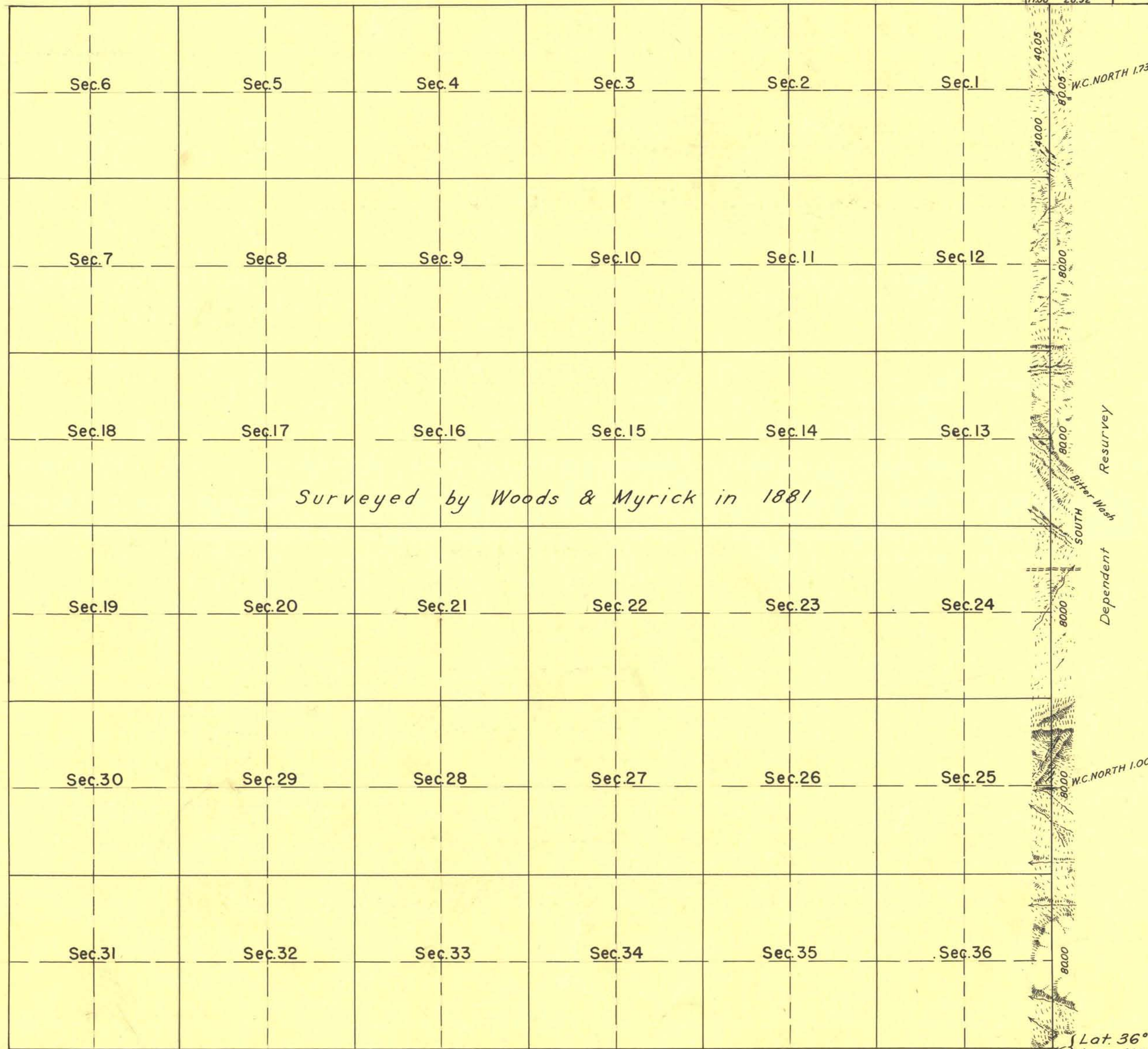


# TOWNSHIP N°17 SOUTH, RANGE N° 69 EAST, OF THE MOUNT DIABLO MERIDIAN, NEVADA.

Sec.36 T.16 S.  
R.69E R.70E.  
FOURTH STANDARD PARALLEL SOUTH WEST 28.92'



Lot. 36° 25' N.  
Long 114° 13' W.

Scale: 40 Chains to an Inch

LINES DESIGNATED	BY WHOM SURVEYED	GROUP		MILEAGE		WHEN SURVEYED	
		N°	DATE	MLS.	CHS.	BEGUN	COMPLETED
Exterior E. Bdy.	James W. Hardison	256	Oct. 7 1938	6	0.05	Feb. 20 1939	April 4 1939
Miscellaneous	and Wilson Mc Conkie			0	40.00		

UNITED STATES DEPARTMENT OF THE INTERIOR  
GENERAL LAND OFFICE

DENVER, COLORADO, NOVEMBER 1, 1944.  
THIS PLAT OF TOWNSHIP NO. 17 SOUTH, RANGE NO. 69 EAST, OF THE MOUNT DIABLO MERIDIAN, NEVADA, IS STRICTLY CONFORMABLE TO THE FIELD NOTES OF THE RESURVEY THEREOF WHICH HAVE BEEN EXAMINED AND APPROVED.

WASHINGTON, D. C., JAN 30 1945  
THE SURVEY REPRESENTED BY THIS PLAT HAVING BEEN CORRECTLY EXECUTED IN ACCORDANCE WITH THE REQUIREMENTS OF LAW AND THE REGULATIONS OF THIS OFFICE, IS HEREBY ACCEPTED.

*C. E. Hartman, Jr.*  
SUPERVISOR OF SURVEYS

*Earl David Wolfson*  
ASSISTANT COMMISSIONER

T.H.D.

3274

T. 17 S., R. 69 E.