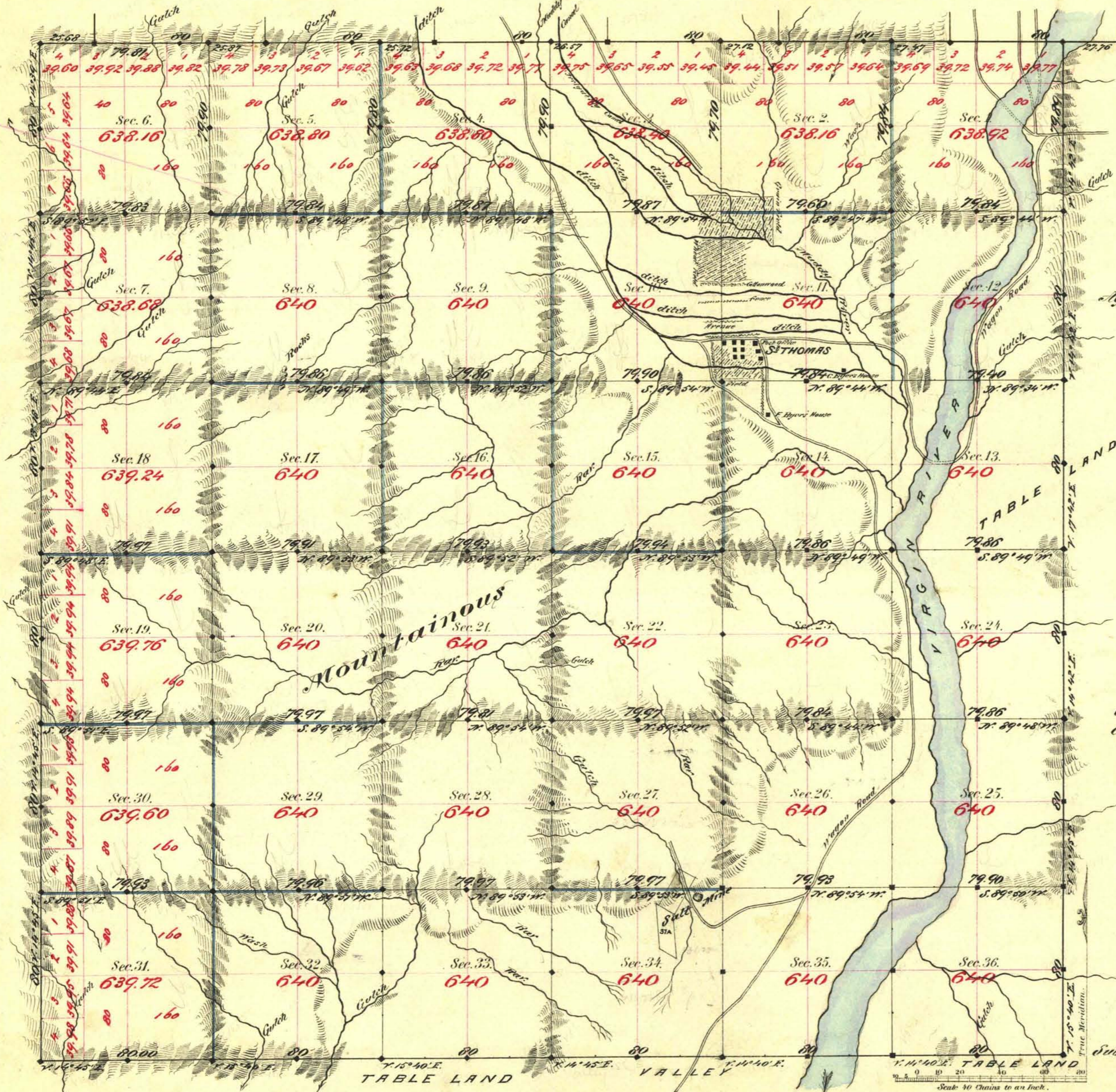


TOWNSHIP N^o 17 SOUTH RANGE N^o 68 EAST MOUNT DIABLO MERIDIAN



Aggregate Area of Public Land Surveyed 23,028.24 Ac.

Commenced February 21st 1881
Completed " 26th

Subdivisions run with a variation of 15' 55" East

Survey Designated	By Whom Surveyed	Date of Contract	Amount of Surveys	When Surveyed
Township line	Woods & Mayhew	January 20 th 1881	302 - 1450	January 1881
Subdivisions Block 1	"	"	38 - 76 - 84	"
" Block 10	"	"	29 - 78 - 38	"
Conveyance	"	"	1 - 52 - 70	"

J.P. Corv
109

The above Map of Township N^o 17 South of Range N^o 68 East
Mount Diablo Meridian is strictly conformable to the field
notes of the survey thereof on file in this Office, which have been examined and approved.
Surveyor General's Office. }
Virginia City, Nev. }
May 28th 1881 }
C. S. Parry }
Sur. Gen. Nev. }