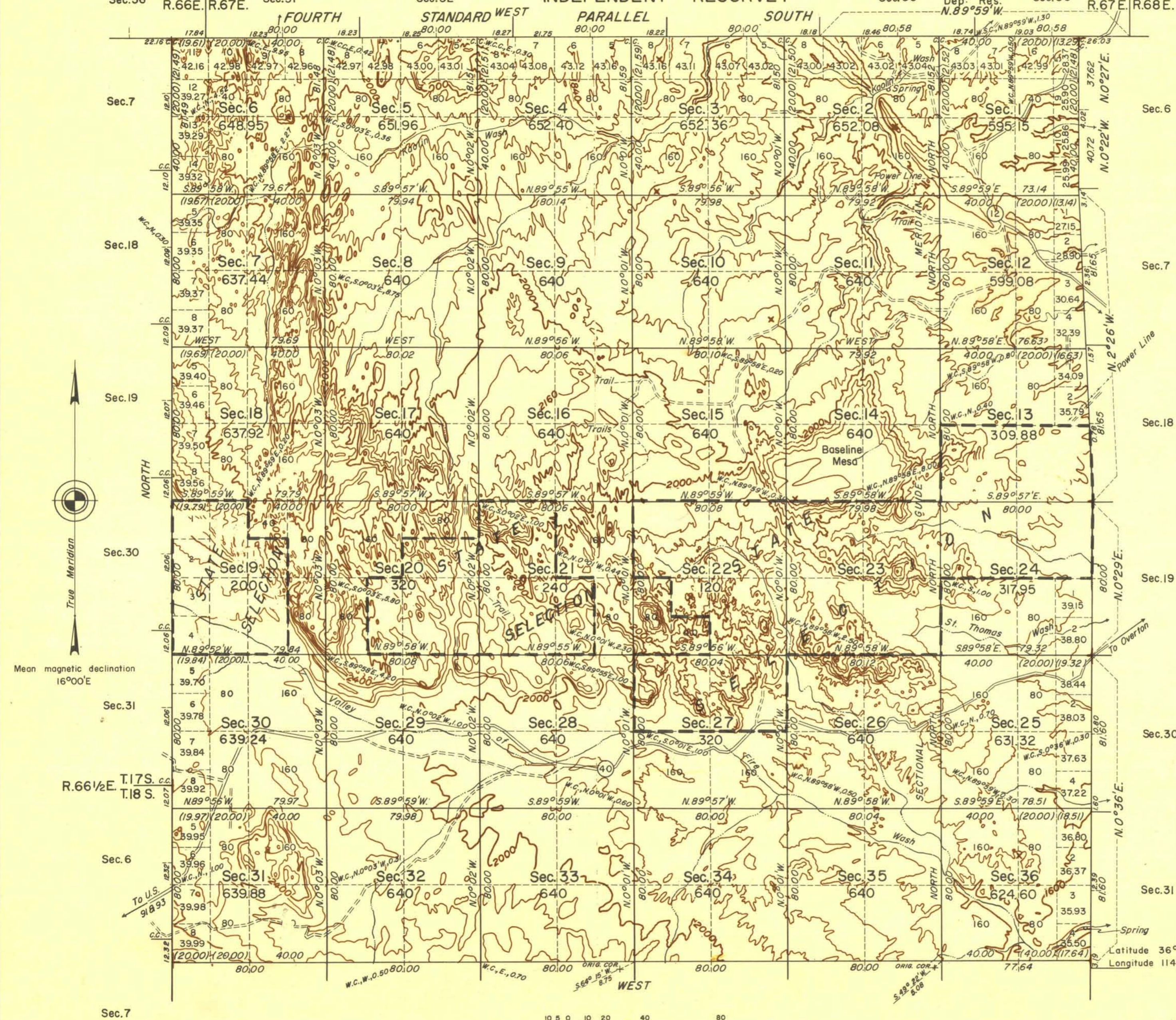


# TOWNSHIP 17 SOUTH, RANGE 67 EAST, OF THE MOUNT DIABLO MERIDIAN, NEVADA

## INDEPENDENT RESURVEY



History of earlier surveys is contained in the field notes.

This plat represents a dependent resurvey of the west boundary of T. 17 S., R. 68 E., and a portion of the Fourth Standard Parallel South through R. 67 E., designed to restore the corners in their original locations according to the best available evidence and the independent resurvey of the south and west boundaries and subdivisional lines of T. 17 S., R. 67 E., Mount Diablo Meridian, Nevada, superseding, as far as public lands are concerned, all such similar units that are shown upon plat approved September 18, 1882.

The lands designated "State Selection" and conformed to the lines of the resurvey under their original descriptions are embraced in patented list Carson City 017453.

Survey executed by Dell Cazier, November 20, 1958 to January 21, 1959, under special instructions dated June 5, 1958 for Group 373, Nevada.

Topography on this plat furnished by the U. S. Geological Survey. For additional topography along surveyed lines, reference is made to the field notes. Contour interval is 80 feet.

UNITED STATES DEPARTMENT OF THE INTERIOR  
BUREAU OF LAND MANAGEMENT  
Washington, D.C. September 27, 1961

This plat is strictly conformable to the approved field notes, and the survey, having been correctly executed in accordance with the requirements of law and the regulations of this Bureau, is hereby accepted.

For the Director

*E. H. Remington*  
Chief, Division of Engineering

Area exclusive of conformations	19,690.21 Acres
Total area of conformations	3,261.80 "
Total area resurveyed	22,952.01 "