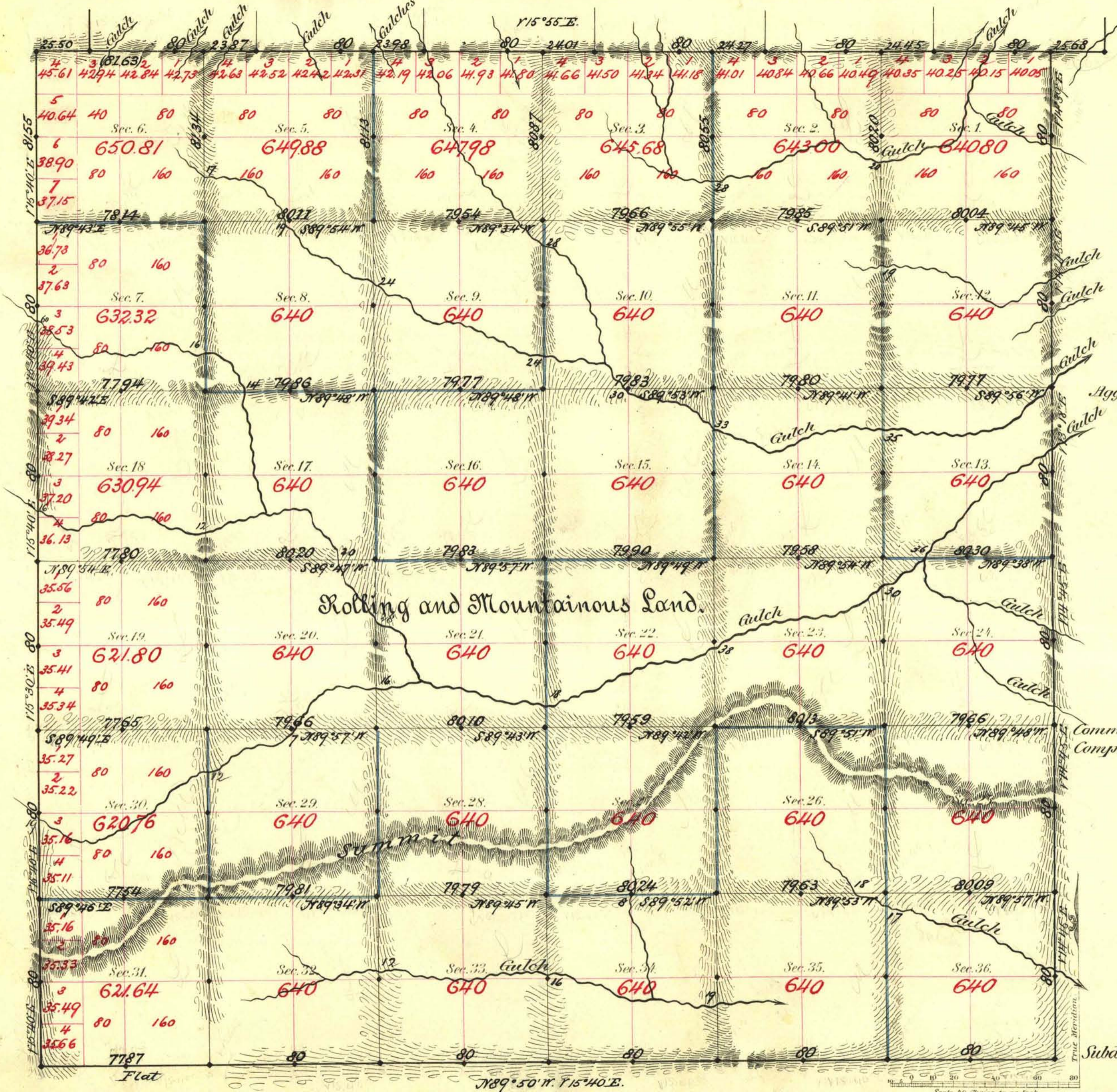


TOWNSHIP N<sup>o</sup> 17 SOUTH RANGE N<sup>o</sup> 67 EAST MOUNT DIABLO MERIDIAN



Aggregate Area of Public Land Surveyed 23005.61 Acres.

Commenced August 19<sup>th</sup> 1882.  
Completed " 25<sup>th</sup> "

Subdivisions run with a variation of 15' 40" East.

Survey Designated	By Whom Surveyed	Date of Contract	Amount of Surveys	When Surveyed	7 <sup>th</sup> Con
N. & E. Bdy.	Woods & Myrick	Jan. 20 <sup>th</sup> 1881	12-00-00	1881	109
S. & W. "	W. H. Myrick	May 29 <sup>th</sup> 1882	11-79-42	1882	139
Sectionlines bk.	"	"	33-72-70	August "	"
" " blue "	"	"	25-77-20	"	"
Convergency	"	"	1-40-58	"	"

The above Map of Township N<sup>o</sup> 17 South of Range N<sup>o</sup> 67 East of Mt. Diablo Meridian is strictly conformable to the field notes of the survey thereof on file in this Office, which have been examined and approved.

Surveyor General's Office,  
Reno, Nevada  
Sept. 18<sup>th</sup> 1882

*C. S. Davis*  
Sur. Gen. Nevada