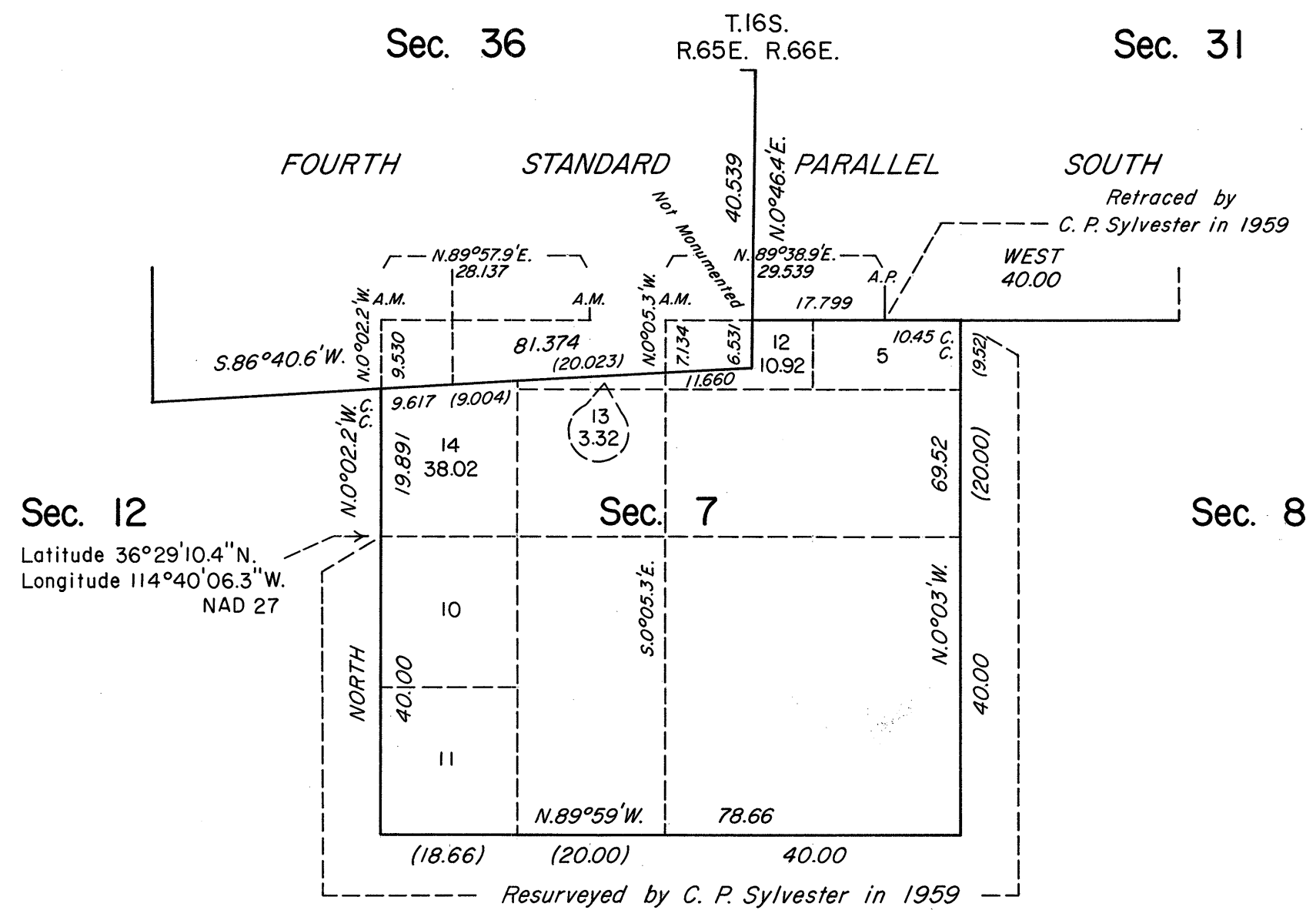
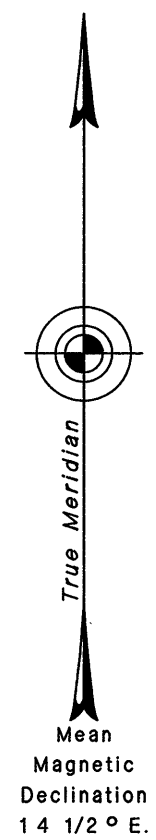


ORIGINAL

TOWNSHIP 17 SOUTH, RANGE 66 EAST, OF THE MOUNT DIABLO MERIDIAN, NEVADA
DEPENDENT RESURVEY



History of the earlier surveys is contained in the field notes.

A dependent resurvey of the Fourth Standard Parallel South, through R. 65 E., and the east boundary of T. 16 S., R. 65 E., was executed concurrently under this same Group.

This plat represents a dependent resurvey of a portion of the west boundary of T. 17 S., R. 66 E., designed to restore the corners in their true original locations according to the best available evidence.

Lottings and areas, except as indicated hereon, are as shown on the plat accepted September 27, 1961.

Survey executed by James A. Mack and Stephen R. Lambeth, Cadastral Surveyors, beginning August 21, 1986, and completed September 4, 1986, under Special Instructions dated August 19, 1986 for Group No. 638, Nevada.

UNITED STATES DEPARTMENT OF THE INTERIOR
BUREAU OF LAND MANAGEMENT

Reno, Nevada May 30, 1989

This plat is strictly conformable to the approved field notes, and the survey, having been correctly executed in accordance with the requirements of law and the regulations of this Bureau, is hereby accepted.

For the Director

Lucel E. Bland

Chief Cadastral Surveyor

