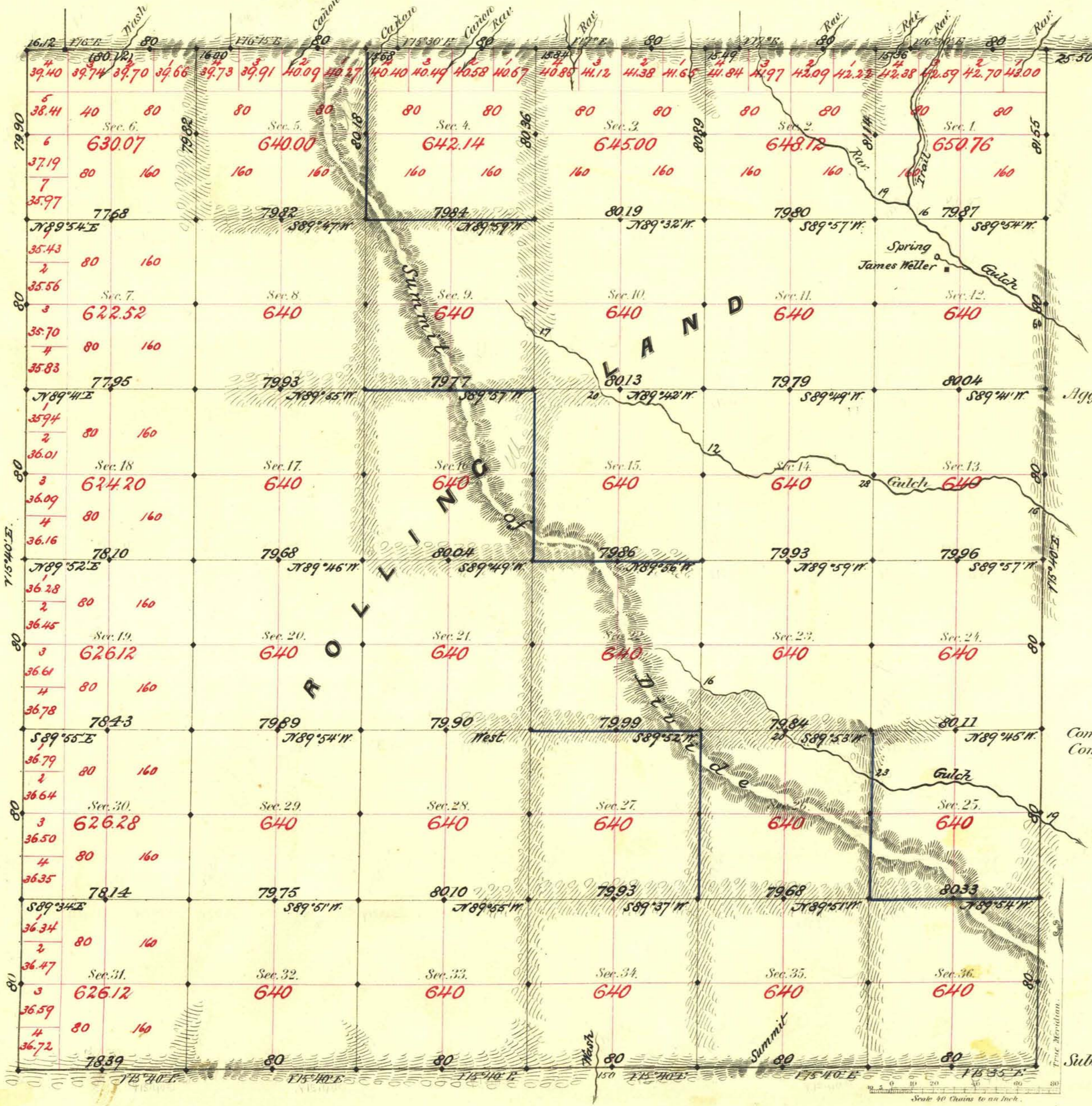


TOWNSHIP N^o 17 SOUTH RANGE N^o 66 EAST MOUNT DIABLO MERIDIAN



Aggregate Area of Public Land Surveyed 22981.33 Acres.

Commenced August 9th 1882.
Completed " 16th "

Subdivisions run with a Variation of 15^o 40' East.

Check with Engineer before setting lease remaining lease or granting any application because of Survey notes

Surveys Designated	By Whom Surveyed	Date of Contract	Amount of Surveys	When Surveyed	7 th Cor.
N. Bdy.	Monroe & Bateman	Nov. 12 th 1872	36-80-80	1872	109
E. "	W.H. Myrick	May 29 th 1882	6-01-55	1882	139
S.W. "	T.A. Magee	June 21 st	11-78-29	August	142
Subdiv ^{ns} black	"	"	50-70-89	"	"
blue	"	"	8-79-97	"	"
Convergency	"	"	78-37	"	"

The above Map of Township N^o 17 South of Range N^o 66 East of Mt. Diablo Meridian is strictly conformable to the field notes of the survey thereof on file in this Office, which have been examined and approved.

Surveyor General's Office,
Reno, Nevada

Sept. 18th 1882

W.S. Davis
Sur. Gen. Nevada