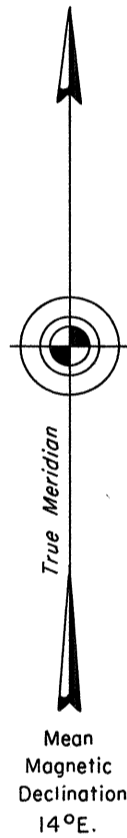
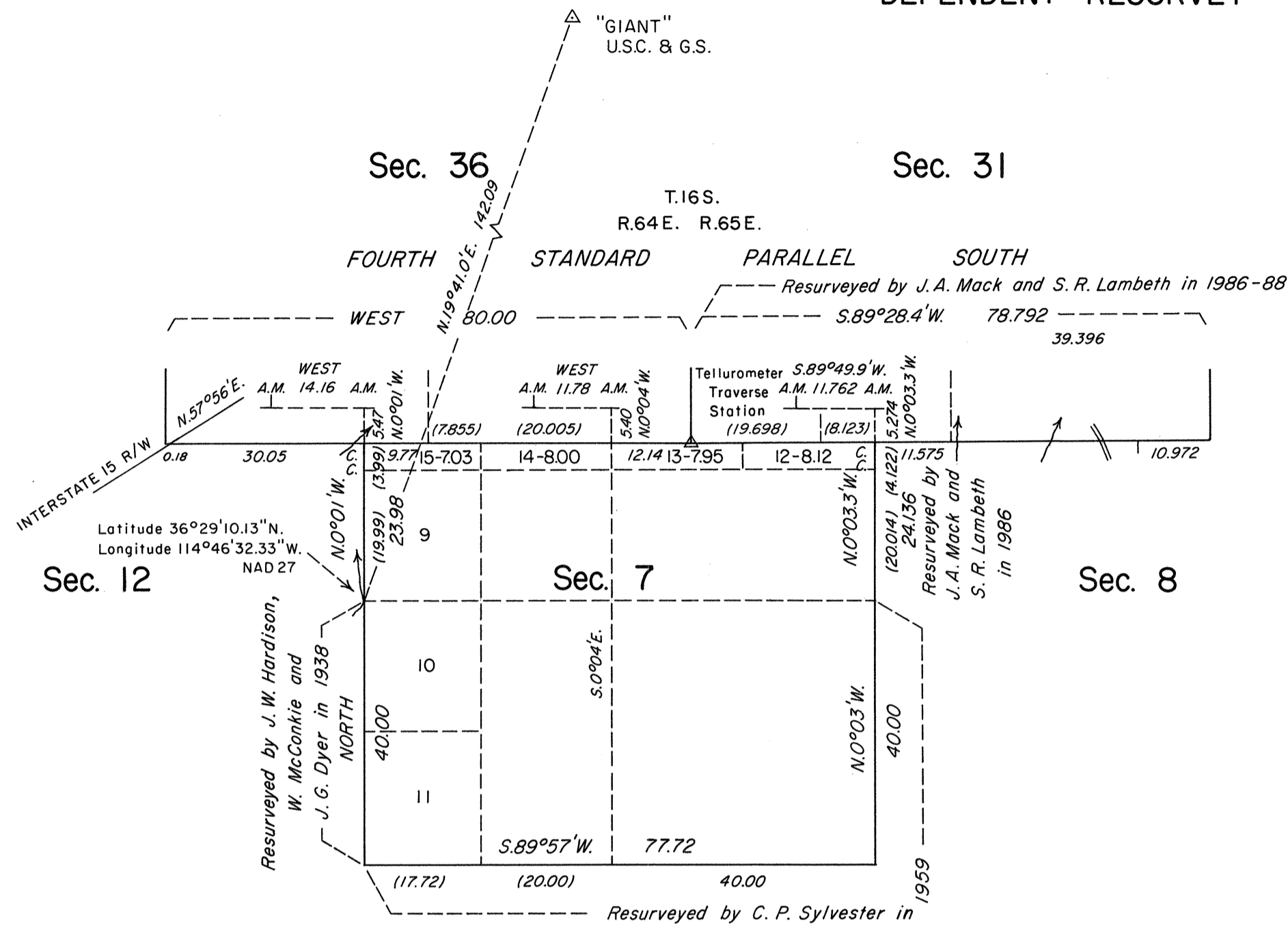


**ORIGINAL**

TOWNSHIP 17 SOUTH, RANGE 65 EAST, OF THE MOUNT DIABLO MERIDIAN, NEVADA  
 DEPENDENT RESURVEY



History of the earlier surveys is contained in the field notes.

A dependent resurvey of the Fourth Standard Parallel South, through Range 64 East, was executed concurrently under this same Group.

This plat represents a dependent resurvey of a portion of the west boundary of T. 17 S., R. 65 E., designed to restore the corners in their original locations according to the best available evidence.

Lottings and areas, except as indicated hereon, are as shown on the plat accepted September 27, 1961.

Survey executed by Stephen R. Lambeth, Cadastral Surveyor, beginning March 9, 1987 and completed March 9, 1987, under Special Instructions dated January 8, 1987, for Group No. 641, Nevada.

Resurveyed by C. P. Sylvester in 1959

UNITED STATES DEPARTMENT OF THE INTERIOR  
 BUREAU OF LAND MANAGEMENT

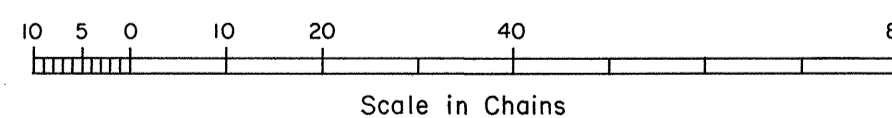
Reno, Nevada August 13, 1990

This plat is strictly conformable to the approved field notes, and the survey, having been correctly executed in accordance with the requirements of law and the regulations of this Bureau, is hereby accepted.

For the Director

*John S. Parrish*

Chief Cadastral Surveyor



T.17S., R.65E., M.D.M.

JRM