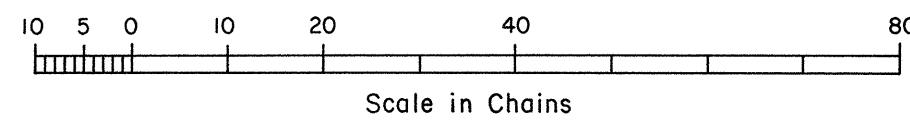
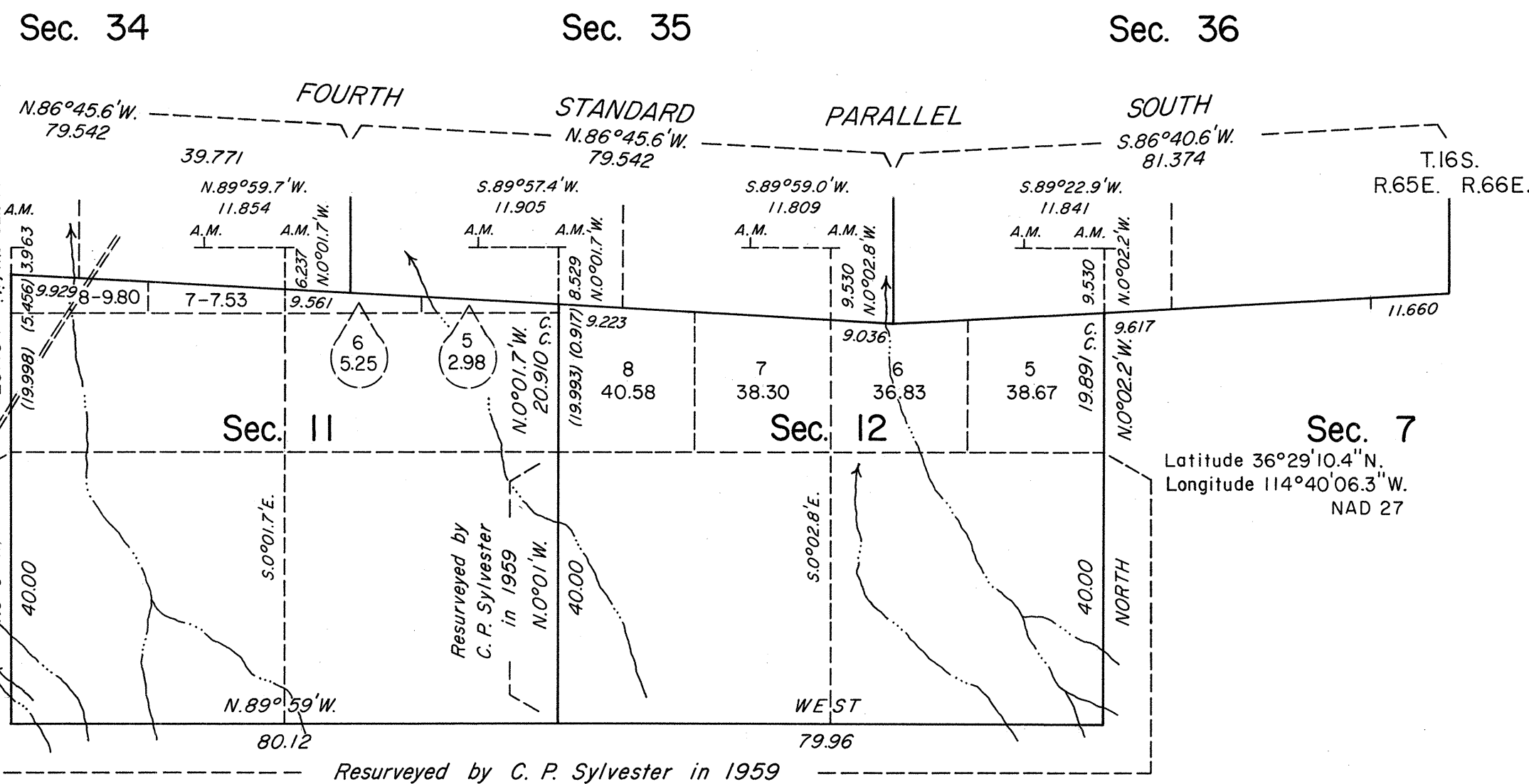
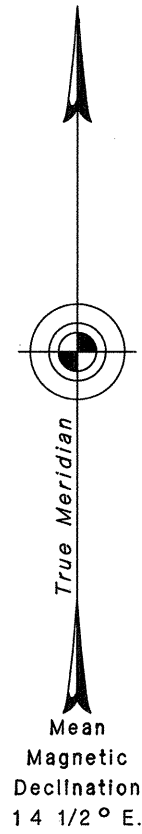
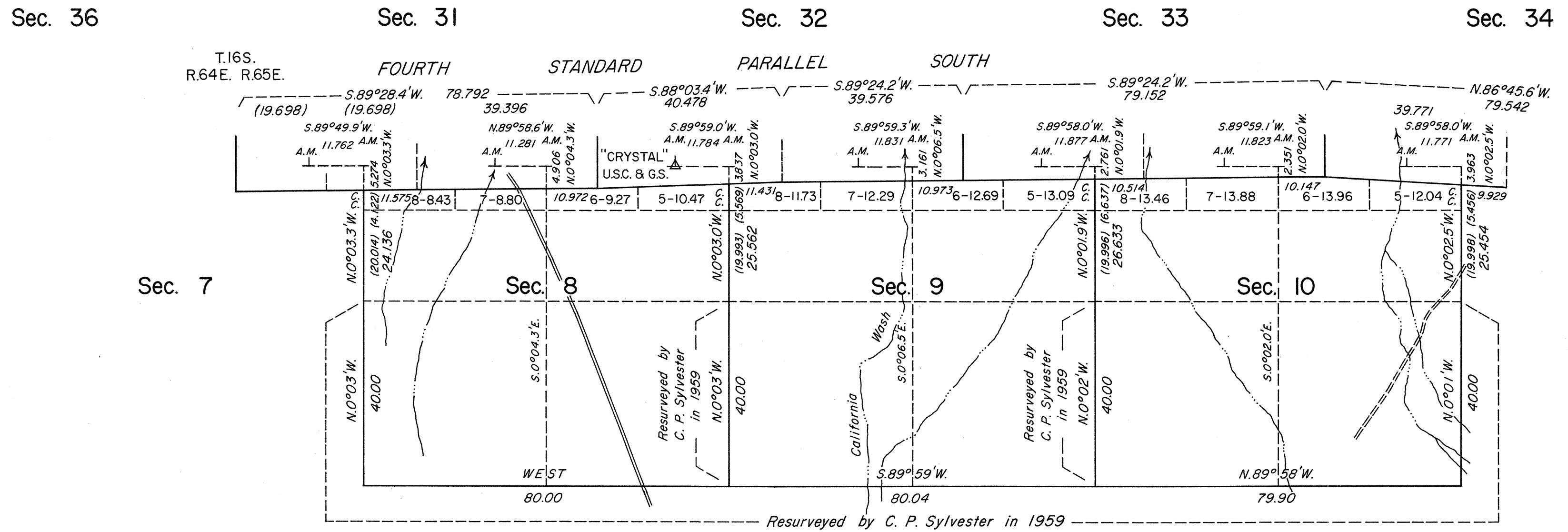


ORIGINAL

TOWNSHIP 17 SOUTH, RANGE 65 EAST, OF THE MOUNT DIABLO MERIDIAN, NEVADA

DEPENDENT RESURVEY



History of the earlier surveys is contained in the field notes.

A dependent resurvey of the Fourth Standard Parallel South, through R. 65 E., and a portion of the west boundary of T. 17 S., R. 66 E., was executed under this same Group. The field notes thereof are included in the notes of T. 16 S., R. 65 E., and T. 17 S., R. 66 E., respectively.

This plat represents a dependent resurvey of a portion of the subdivisional lines of T. 17 S., R. 65 E., designed to restore the corners in their true original locations according to the best available evidence.

Lottings and areas, except as indicated hereon, are as shown on the plat accepted September 27, 1961.

Survey executed by James A. Mack and Stephen R. Lambeth, Cadastral Surveyors, beginning August 21, 1986, and completed September 4, 1986, under Special Instructions dated August 19, 1986 for Group No. 638, Nevada.

Sec. 7
Latitude 36°29'10.4"N.
Longitude 114°40'06.3"W.
NAD 27

UNITED STATES DEPARTMENT OF THE INTERIOR
BUREAU OF LAND MANAGEMENT
Reno, Nevada May 30, 1989

This plat is strictly conformable to the approved field notes, and the survey, having been correctly executed in accordance with the requirements of law and the regulations of this Bureau, is hereby accepted.

For the Director

Lacel E. Bland

Chief Cadastral Surveyor