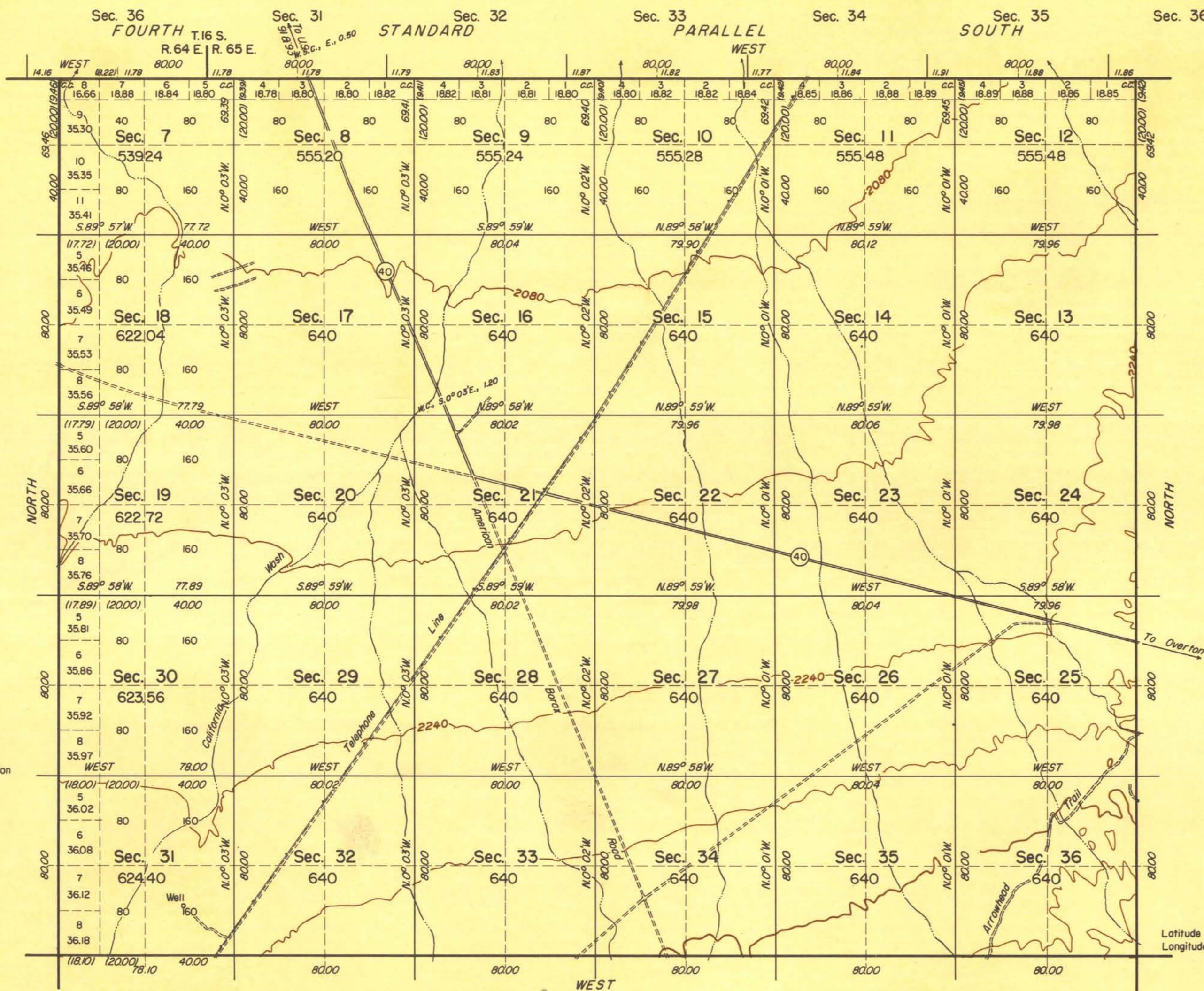


TOWNSHIP 17 SOUTH, RANGE 65 EAST, OF THE MOUNT DIABLO MERIDIAN, NEVADA

INDEPENDENT RESURVEY



History of earlier surveys is contained in the field notes.

This plat represents an independent resurvey of the south and east boundaries and subdivisional lines of T. 17 S., R. 65 E., Mount Diablo Meridian, Nevada, superseding the survey made by T. A. Magee in 1882 as shown upon plat approved September 18, 1882.

Survey executed by Craig P. Sylvester, January 23 to February 17, 1959 under special instructions dated June 5, 1958 for Group 373, Nevada.

Topography on this plat furnished by the U. S. Geological Survey. For additional topography along surveyed lines, reference is made to the field notes. Contour interval is 80 feet.

Latitude 36° 25' 15.9" N.
Longitude 114° 40' 10.0" W.

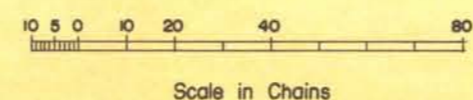
UNITED STATES DEPARTMENT OF THE INTERIOR
BUREAU OF LAND MANAGEMENT
Washington, D.C. September 27, 1961

This plat is strictly conformable to the approved field notes, and the survey, having been correctly executed in accordance with the requirements of law and the regulations of this Bureau, is hereby accepted.

For the Director

Ed Livingston
Chief, Division of Engineering

Area Resurveyed, 18608.64 Acres



Mean Magnetic Declination
15° 45' E.