

ORIGINAL

TOWNSHIP 17 SOUTH, RANGE 64 EAST, OF THE MOUNT DIABLO MERIDIAN, NEVADA

DEPENDENT RESURVEY AND SUBDIVISION OF SECTION

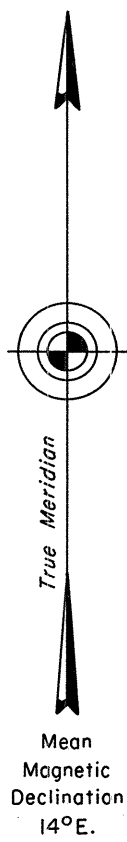
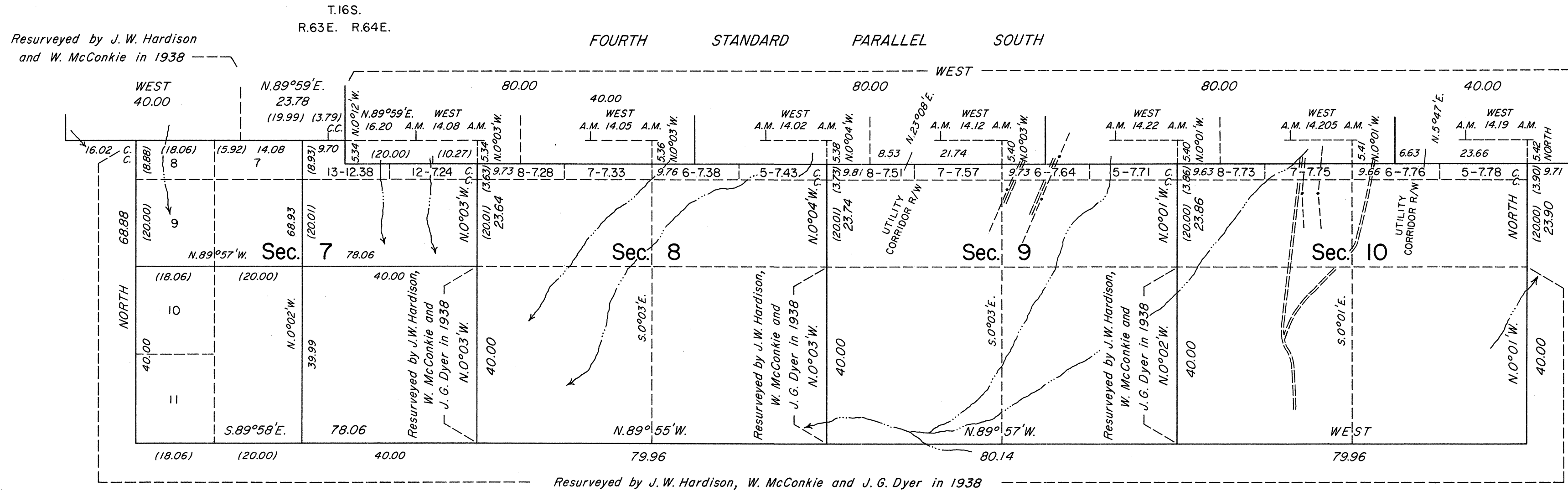
Sec. 36

Sec. 31

Sec. 32

Sec. 33

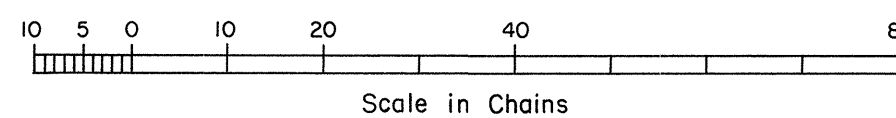
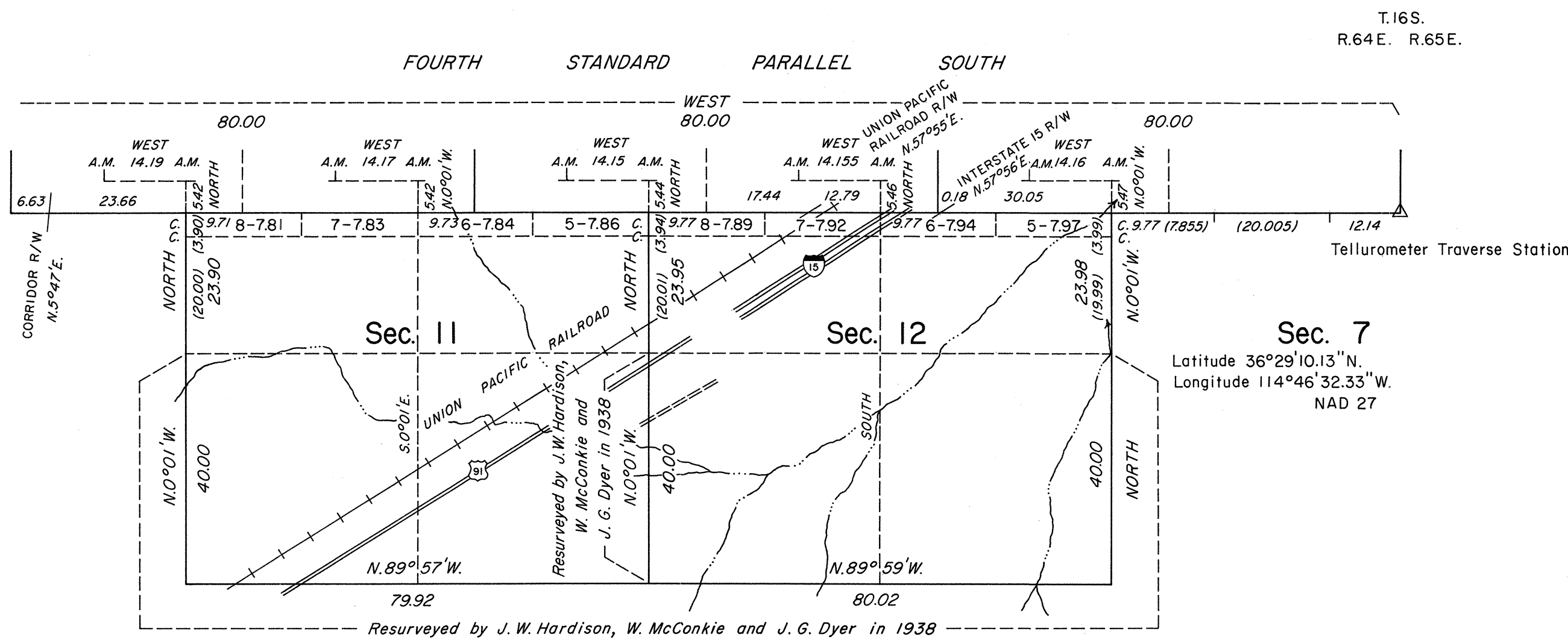
Sec. 34



Sec. 34

Sec. 35

Sec. 36



History of the earlier surveys is contained in the field notes.

A dependent resurvey of the west boundary of T. 16 S., R. 64 E. and the Fourth Standard Parallel South, through Range 64 East, a portion of Range 63 East, and a portion of the east boundary was executed concurrently under this same Group. The field notes thereof are included in the notes of T. 16 S., R. 64 E., T. 16 S., R. 63 E. and T. 17 S., R. 65 E., respectively.

This plat represents a dependent resurvey of a portion of the subdivisional lines, designed to restore the corners in their original locations according to the best available evidence; and the survey of the subdivision of section 7 of T. 17 S., R. 64 E.

Lottings and areas, except as indicated hereon, are as shown on the plat approved October 30, 1944 and accepted May 11, 1945.

Survey executed by Stephen R. Lambeth, Cadastral Surveyor, beginning February 5, 1987 and completed March 18, 1987, under Special Instructions dated January 8, 1987, for Group No. 641, Nevada.

UNITED STATES DEPARTMENT OF THE INTERIOR
BUREAU OF LAND MANAGEMENT

Reno, Nevada August 13, 1990

This plat is strictly conformable to the approved field notes, and the survey, having been correctly executed in accordance with the requirements of law and the regulations of this Bureau, is hereby accepted.

For the Director

John D. Parrish
Chief Cadastral Surveyor

T.17 S., R.64E., M.D.M.