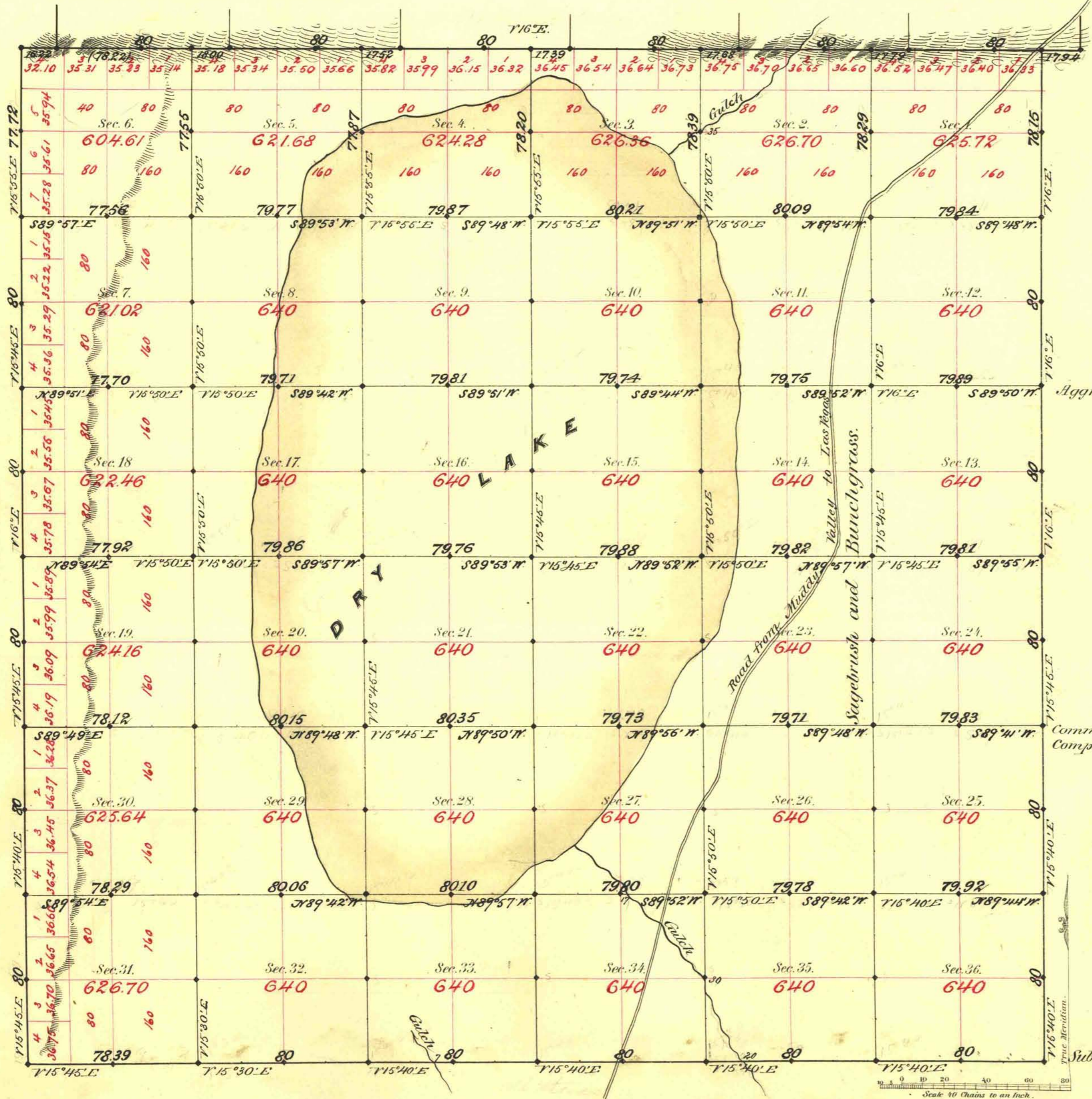


TOWNSHIP N^o 17 SOUTH RANGE N^o 64 EAST MOUNT DIABLO MERIDIAN



Aggregate Area of Public Land surveyed 22,849.33 Acres.

Commenced Febr. 28th 1882.
Completed March 6th -

Subdivisions not noted run with a variation of 15' 40" East.

Surveys Designated	By Whom Surveyed	Date of Contract	Amount of Surveys	When Surveyed
North Bay	Woods & Myrick	Jan. 20 th 1881	6 ^m 00 ^{ch} 00 ^{lk}	1881
E. N. & S.	-	28 th -	17 - 74 - 26	-
Subdivisions	-	-	59 - 57 - 13	Feb. & March -
Convergency	-	-	1 - 08 - 38	-

77th Cont
109
111
112

The above Map of Township N. 17 South of Range N. 64 East of Mount Diablo Meridian is strictly conformable to the field notes of the survey thereof on file in this Office, which have been examined and approved.

Surveyor General's Office,
Reno, Nevada
April 28th 1882.

D. S. Parry
Sur. Gen. Nev.

2