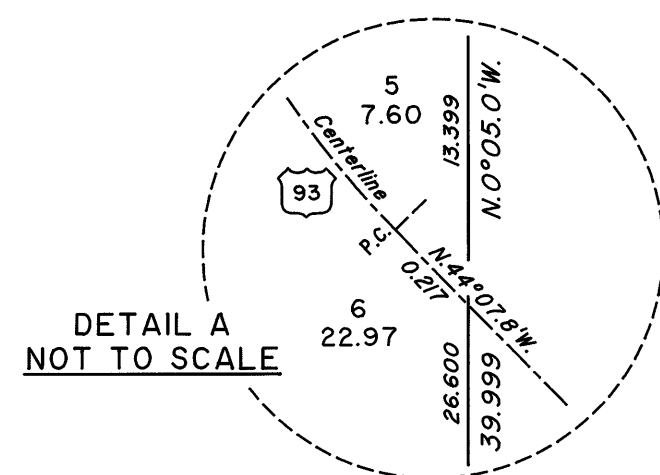


TOWNSHIP 17 SOUTH, RANGE 63 EAST, OF THE MOUNT DIABLO MERIDIAN, NEVADA

DEPENDENT RESURVEY



*Independently Resurveyed
by C. P. Sylvester in 1958*

A history of surveys is contained in the field notes.

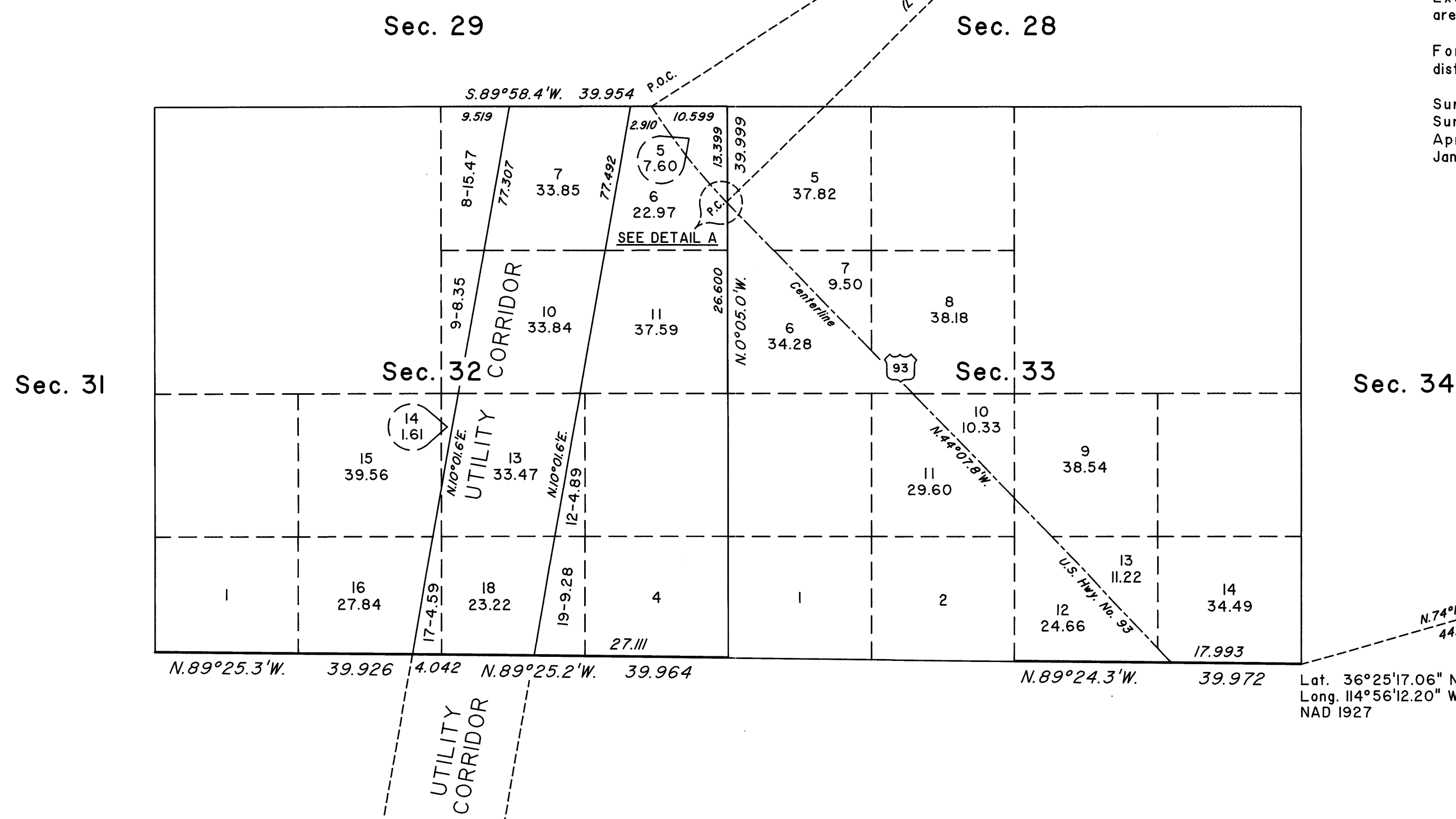
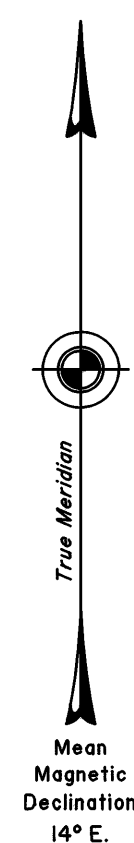
This plat represents the dependent resurvey of a portion of the south boundary and a portion of the subdivisional lines of Township 17 South, Range 63 East, Mount Diablo Meridian, Nevada, designed to restore the corners in their true original locations according to the best available evidence.

Certain lottings were computed using State of Nevada, Department of Highways Right-of-Way plans for U.S. Highway No. 93 (Project No. S-544 (15)) through ties to highway control monuments made during the course of this survey.

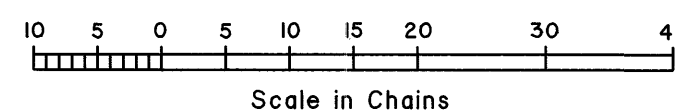
Except as indicated hereon, the lottings and areas are as shown on the plat accepted November 2, 1960.

For those surveyed lines not showing bearings and distances, refer to the official 1960 survey.

Survey executed by Richard A. Zaninovich, Cadastral Surveyor, beginning January 25, 1993, and completed April 29, 1993, pursuant to Special Instructions dated January 19, 1993, for Group No. 733, Nevada.



Note: Portions of Township 18 South, Range 63 East, were dependently resurveyed under this same Group.



UNITED STATES DEPARTMENT OF THE INTERIOR
BUREAU OF LAND MANAGEMENT

Reno, Nevada August 12, 1997

This plat is strictly conformable to the approved field notes, and the survey, having been correctly executed in accordance with the requirements of law and the regulations of this Bureau, is hereby accepted.

For the Director

Robert H. Thompson

Acting Chief Cadastral Surveyor, Nevada

T.17S., R.63E., M.D.M.