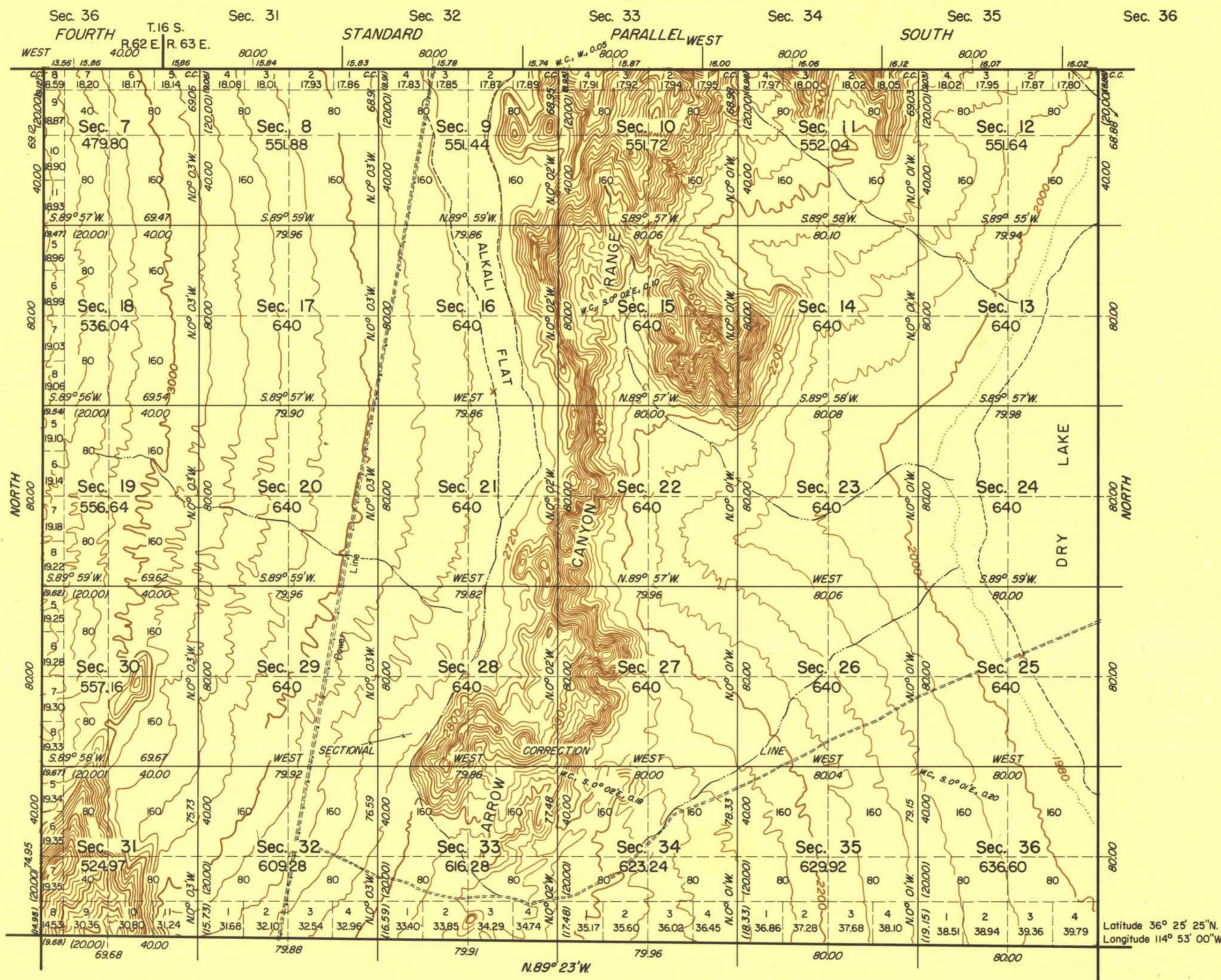




TOWNSHIP 17 SOUTH, RANGE 63 EAST, OF THE MOUNT DIABLO MERIDIAN, NEVADA

INDEPENDENT RESURVEY



History of earlier surveys is contained in the field notes.

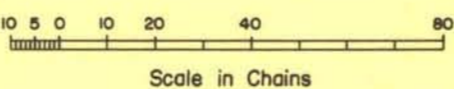
This plat represents an independent resurvey of the west boundary and subdivisional lines of T. 17 S., R. 63 E., Mt. Diablo Meridian, Nevada, superseding the surveys executed by R.H. Woods and W.H. Myrick as shown upon plat approved April 28, 1882.

Survey executed by Craig P. Sylvester, November 20 to December 11, 1958, under special instructions dated July 28, 1958 for Group 374, Nevada.

Topography on this plat furnished by the U. S. Geological Survey. For additional topography along surveyed lines, reference is made to the field notes.



Area Resurveyed, 18,148.65 Acres.



UNITED STATES DEPARTMENT OF THE INTERIOR
BUREAU OF LAND MANAGEMENT
Washington, D. C. November 2, 1960

This plat is strictly conformable to the approved field notes, and the survey, having been correctly executed in accordance with the requirements of law and the regulations of this Bureau, is hereby accepted.

For the Director

Cadastral Engineering Staff Officer