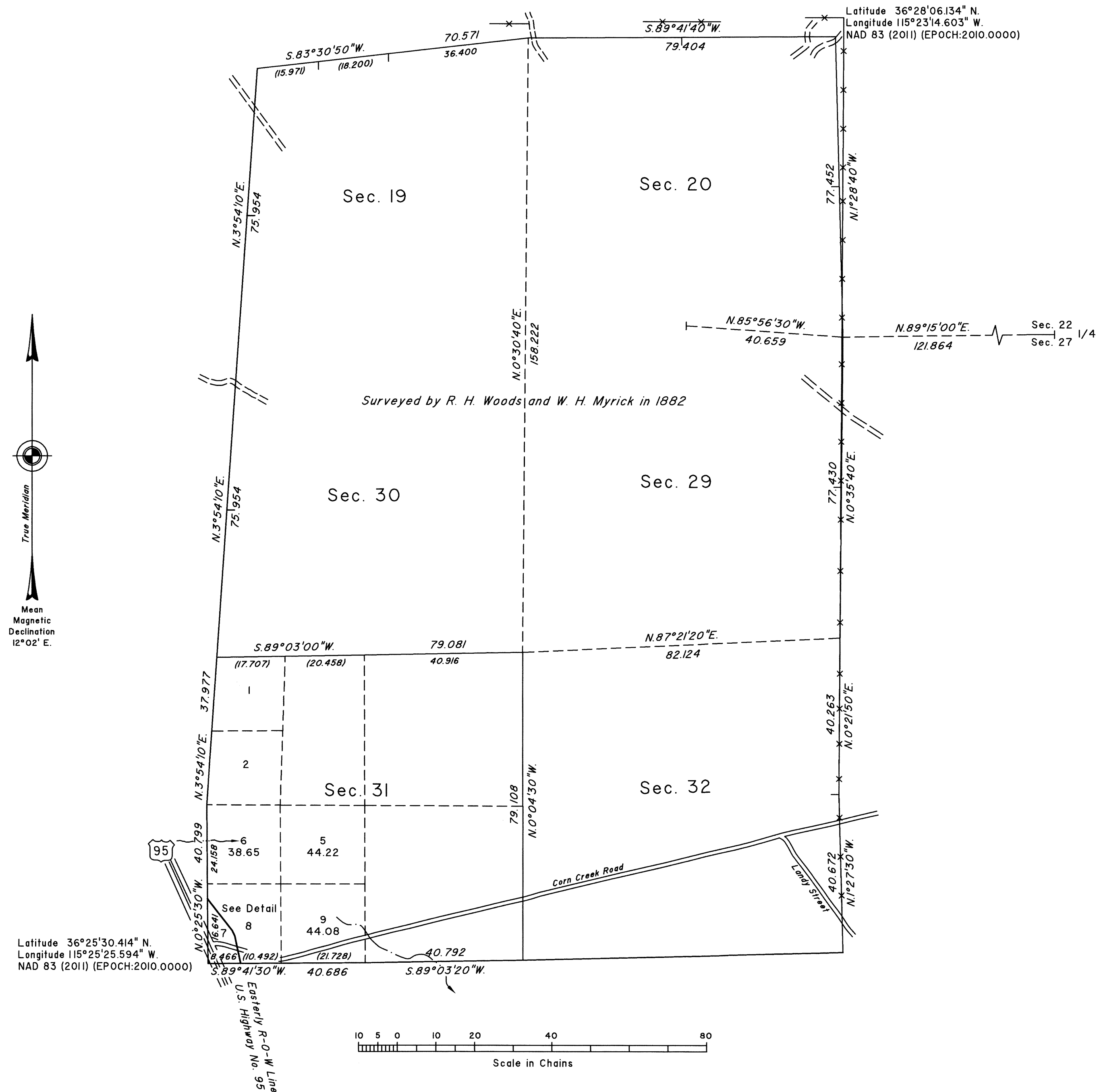


DEPENDENT RESURVEY AND METES-AND-BOUNDS SURVEY



DETAIL
Not to Scale

Easterly R-O-W Line
U.S. Highway No. 95

W.P.

N 38° 08' 40" W
104.56

16.64

7
8.99

A.P. 2
N 25° 03' 40" W
1.515

A.P. 1

N 12° 05' 20" W
7.177

W.P.

8.466

8

29.62

(10.492)

S 89° 41' 30" W

Survey executed by Brandon G. Courtright, Cadastral
Surveyor, beginning May 9, 2015 and completed June 3,
2020, pursuant to Special Instructions dated May 6, 2015,
for Group No. 945, Nevada.

This plat is strictly conformable to the approved field notes, and the survey, having been correctly executed in accordance with the requirements of law and the regulations of this Bureau, is hereby accepted.

For the Director


 Chief Cadastral Surveyor for Nevada

T.17S., R.59E., M.D.M.

CWM