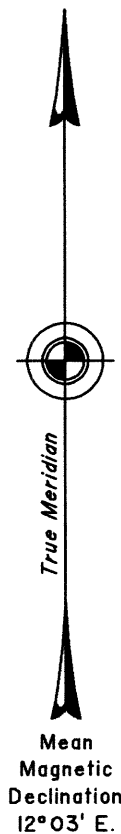


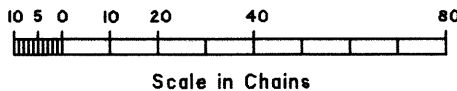
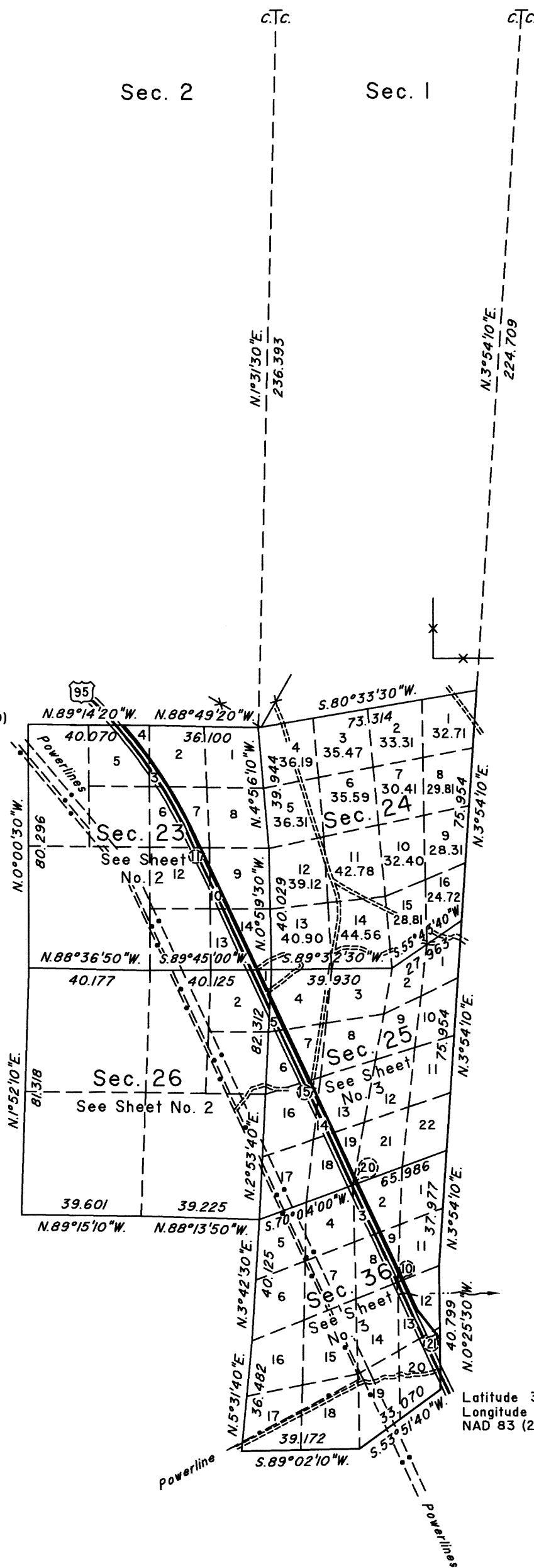
OFFICIALLY FILED  
NEVADA STATE OFFICE  
at 10:00 AM on OCT 27 2020

TOWNSHIP 17 SOUTH, RANGE 58 EAST, OF THE MOUNT DIABLO MERIDIAN, NEVADA  
DEPENDENT RESURVEY AND METES-AND-BOUNDS SURVEY



Surveyed by  
E. A. Carter  
in 1881

Latitude 36°27'53.640" N.  
Longitude 115°27'15.355" W.  
NAD 83 (2011) (EPOCH:2010.0000)



A history of surveys is contained in the field notes.

This plat, in three sheets, represents the dependent resurvey of portions of the south and east boundaries and a portion of the subdivisional lines, designed to restore the corners in their true original locations according to the best available evidence, and a metes-and-bounds survey of the easterly right-of-way line of U.S. Highway No. 95, through sections 23, 25, 26 and 36, Township 17 South, Range 58 East, Mount Diablo Meridian, Nevada.

Except as indicated hereon, the lottings and areas are as shown on the plat approved February 18, 1882.

Survey executed by Brandon G. Courtright, Cadastral Surveyor, beginning May 7, 2015 and completed June 3, 2020, pursuant to Special Instructions dated May 6, 2015, for Group No. 945, Nevada.

UNITED STATES DEPARTMENT OF THE INTERIOR  
BUREAU OF LAND MANAGEMENT

Reno, Nevada August 10, 2020

This plat is strictly conformable to the approved field notes, and the survey, having been correctly executed in accordance with the requirements of law and the regulations of this Bureau, is hereby accepted.

For the Director

*Michael O. Hammer*

Chief Cadastral Surveyor for Nevada

Latitude 36°25'30.414" N.  
Longitude 115°25'25.594" W.  
NAD 83 (2011) (EPOCH:2010.0000)