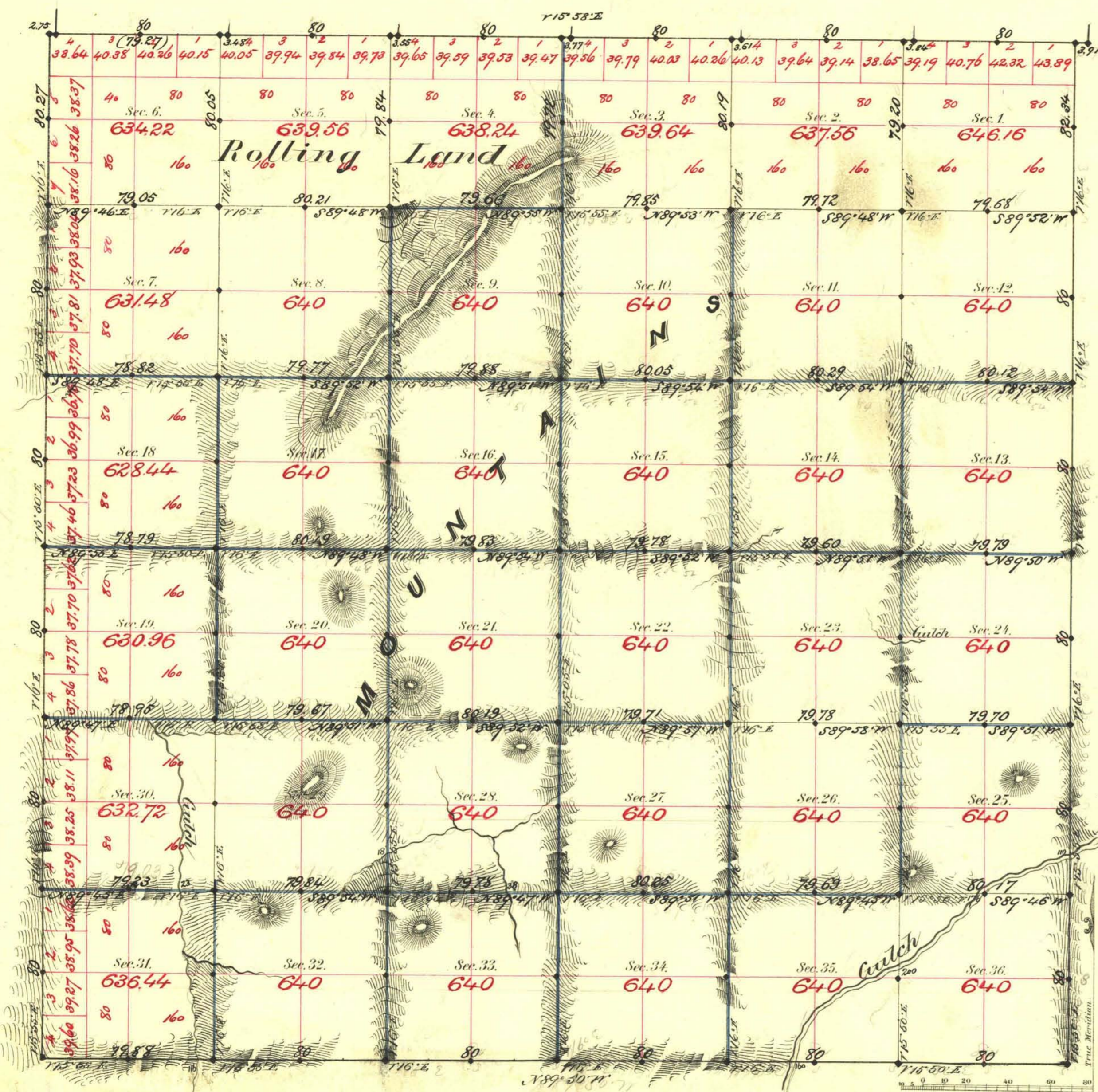


TOWNSHIP N<sup>o</sup> 17 SOUTH RANGE N<sup>o</sup> 57 EAST MOUNT DIABLO MERIDIAN



Aggregate area of Public Land Damaged 22,995.42 Acres.

Commenced August 1st 1881  
Completed " 9th "

Survey Designated	By Whom Surveyed	Date of Contract	Amount of Survey	When Surveyed
M. Day	Needs & Myrds	Jan. 2nd 1881	20 20 50	1881
O. N. & J. Day	Shur Dingle	3rd "	18-02-49	"
Subdiv. block by	"	"	14-77-74	August "
Comagency	"	"	44-73-30	"
			18-25	"

770 COR.  
109  
114

The above Map of Township N<sup>o</sup> 17 South of Range N<sup>o</sup> 57 East  
Mt. Diablo Meridian is strictly conformable to the field  
notes of the survey thereof on file in this Office, which have been examined and approved.  
Surveyor General's Office }  
Virginia City Nev }  
October 14<sup>th</sup> 1881. }  
W. S. Davis }  
Sur. Gen.